



Technical Data

wedi Ecobath™ | Fundo One-Step Shower System



## wedi® EcoBath™ Fundo One-Step Shower System

### Overview

wedi EcoBath Fundo One-Step Shower System is designed to allow for safe installations fitted to size framed jobsites. It is the perfect prefabricated solution for managing large quantities of shower installations in hospitality or commercial facility projects with tight time frames. The wedi EcoBath Fundo One-Step Shower System offers maximum safety and long term product performance. With wedi's state-of-the-art manufacturing technology, no detail is overlooked. The wedi EcoBath Fundo One-Step Shower System is intended for both tile & plumbing trades.

### General Product Description

wedi Fundo One-Step Shower System is the industry's sturdiest, one-piece, molded shower base designed for tile or stone finishes. This high performance shower base with an integrated curb and 1/2" thick walls is available in five standard sizes and endless custom sizes at your request. Solid, seamless and pre-sloped with no potential for leaking, wedi EcoBath Fundo One-Step Shower System meets ANSI Z124.1.2 standards and is IPC and UPC compliant. The unit also includes a 4" x 4" solid stainless steel drain cover unit adding elegance to functionality. As a long lasting, superior performance product that prevents water damage, mold and mildew, wedi EcoBath Fundo One-Step Shower System supports sustainable installation standards.

As with every wedi product, the innovative wedi EcoBath Fundo One-Step Shower System offers all the key features contractors need such as internal waterproofness, lightweight handling and insulating properties. Unlike many other preformed molded shower bases, Fundo One-Step does not require any floor thick-bed mortar under the base or epoxy mortar when setting tile to add strength or eliminate flexing. It is prefabricated and ready to install and tile right off the shelf.

### Product Features

- Fundo base with curb & 4" wall/curb integrated
- Passes ANSI Z124.1.2 and ICC PMG Certified
- 5 different sizes with custom options
- Use with all types of wall/backer boards
- Solid, pre-sloped surface
- Curb is sloped to showers inside and can carry up to 480 lbs/ft of weight once tiled
- Can be used with small & large format tile
- Square, high quality stainless steel drain cover/frame
- No seam & no leak potential
- Easy drain hook up
- Subfloor attachment with only thinset adhesive

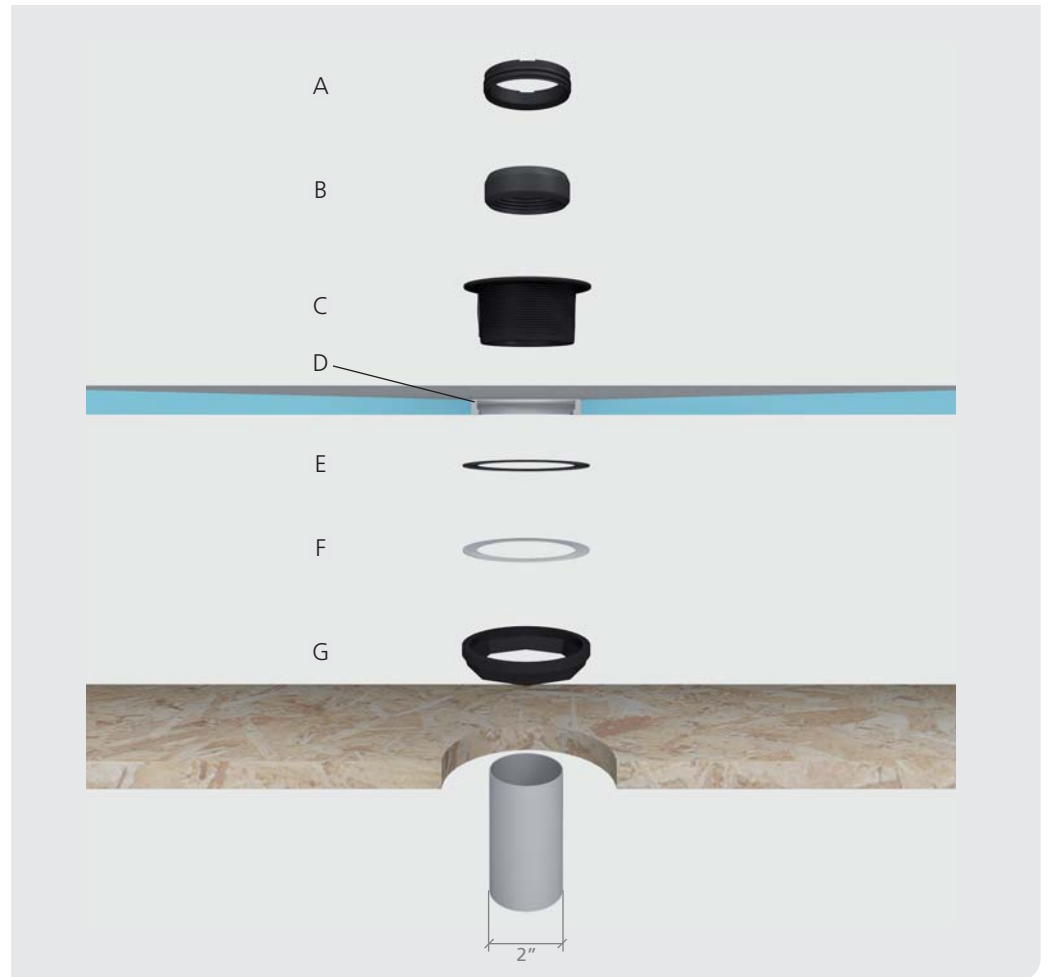
 **ECOBATH**



### Drain connection

#### Legend

- A Caulking nut
- B Rubber caulking gasket
- C Drain body
- D wedi sealant
- E Rubber gasket
- F Fiber gasket
- G Locking nut



#### Tools & Material

- Bucket
- Notch Trowel
- Drill with Thinset Mixer
- Utility Knife
- Straight Edge/T Square 5 ft or longer
- Caulk Gun
- Flat Head Screwdriver
- Screw gun
- Solid Putty Knife
- Paper Towels
- Level
- Tape Measure
- Shop vacuum cleaner

#### Before Installation

- Subfloor is sound, level and meets deflection criteria. Wooden or concrete structural substrates are dry and loadbearing. Steel framing is loadbearing.
- Floor joists not to exceed 16" o.c. Subfloor panels ¾" T&G EGP or equivalent.
- 2" ABS or PVC drain is cut flush and square with the subfloor surface and is positioned to fit the wedi Fundo One Step drain. If you connect to a cast iron pipe, please order a special sealing gasket from wedi.
- 2" drain assembly below floor is stabilized and will not sink under water load.
- Installer has received instructions from wedi technical sales staff or is informed about proper installation methods as described

## Installation instructions wedi Ecobath™ One Step onto wooden floors



**1** Cut the 2" pipe flush to the surface of the floor construction. Make sure that the cut out fits to the Ecobath One Step base drain. Cut out a 5" diameter hole around the 2" pipe to allow the wedi drain to be inserted into the subfloor. The drain and trap have to be sturdily fastened to the sub floor.



**2** Set up a continuous 1/4" bead of wedi sealant along the top side of the wedi Ecobath One Step valve groove profile. Drop the drain body firmly into the sealant. Turn the Ecobath One Step pan upside down and apply the rubber and the fiber gasket. Tighten the gaskets firmly to the pans steel ring.



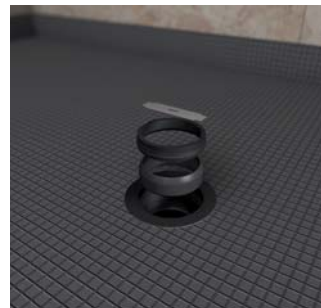
**3** Dry fit the base and make sure that floor drain is located in the center of the wedi drain. Make sure the base walls are square and tight with the framework.



**4** Apply a bed of modified thinset on the floor using a minimum 3/8" x 3/8" or max. 1/2" x 1/2" square notch trowel. The whole contact area for the base must be covered.



**5** Press the Fundo One Step firmly into the thinset bed, ensuring that the installation is level and void free. Apply some weight equally and for at least 30 minutes (thinset bags).



**6** Set up the rubber caulking gasket (bevelled side up) around the 2" pipe in the subfloor. The rubber gasket must be flush with the upper end of the 2" ABS or PVC pipe. Tighten the connection using caulking nut, metal guide and screw driver.

**!** Do Not use any Lubricants.



**7** You can now install waterproof wedi 1/2" building panels directly to the framework and seal all joints and fastener points as usual and per wedi building panel installation guidelines. (you may install other Backerboards but have to add topical waterproofing/membranes).



**8** Your shower is ready for tile!

### After Installation

- Using a 2" drain plug, the wedi pressure fit drain/sealing gasket is water tested prior to ceramic tile installation.
- No mastic adhesives are used to install ceramic tile. A high quality modified thinset mor-

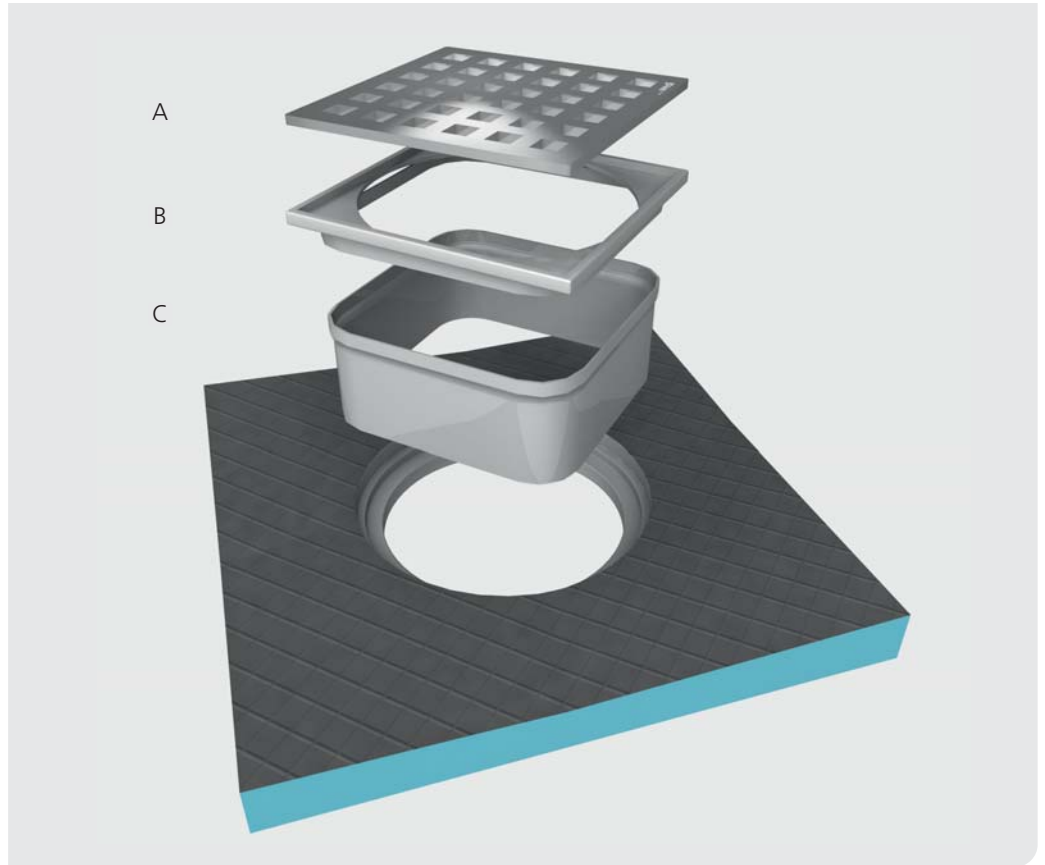
tar is recommended. Tiles smaller than 2 x 2 inches require epoxy grout. Exception are pebble stones or river rock stones where a modified cement bade grout can be used.

- Large format tile can be used on wedi Fundo bases. The tiles must be cut where the slope fields meet.

## Strainer Collar

### Legend

- A wedi Strainer
- B Strainer Collar
- C Optional Extension Collar



**i** Insert Strainer Collar into pan hole (no glue/no screws). Caulk between part and tile to create a flexible grout joint. Extension Collar can be cut to height if part is needed. The caulk joint must not create a water barrier damming up the water draining through the thinset bed into the drain. Therefore the thinset layer must be continuous toward the drain.

- i** • Where wedi building panel or curb overs/caps are installed over horizontal surfaces (seats, curbs, tubdeck transitions) do not set any fasteners and do not allow the glass door installation to penetrate the wedi panel as it is your waterproofing.
- Make sure that doors are installed tight to contain water inside the shower. Make sure doors are installed to only load bearing reinforced framing.
- Where wedi building panel is installed over corners of a structure showing an angle other than 90° please miter the board edges to gain adhesion surface. Utilize a wedi sealing tape in addition to regular sealing for safety.



wedi corporation  
1100 Landmeier Road Suite 200 · Elk Grove Village, IL 60007 USA  
Tel.: +1-877-933-9334 · Fax: +1-847-357-9819  
info@wedicorp.com · www.wedicorp.com

## General Technical Properties for wedi Ecobath™ One-Step Tested for IPC and ICC-ES PMG Compliance

### Technical Properties & Performances of wedi Fundo Ecobath One-Step

<b>National Approval:</b>	ICC PMG 1189/ ISO 9001
<b>Performance Tests performed by</b>	QAI Laboratories
<b>Quality Control Management by</b>	ICC / ISO

<b>Material Composition:</b>	
Core Material:	Extruded Polystyrene closed cell rigid foam
Surface Coating:	Sanded epoxy based coating
Drain:	2" Schedule 40 ABS or Brass; Pressure Fit or Glue Connection

Test Type	Method/ Standard	Result	Passed
Field Installed Shower Kit Assembly Performance	IAPMO PS 46	Complies	Yes
Performance in comparison to waterproofing membranes	ANSI 118.10	Complies	Yes
Shower Base Functionality	IAPMO PS 106	Complies	Yes
Drain Code Compliance	ASME A112.18.2/ CSA B125.2	Complies	Yes
Waterproofness of product system ( base/wall/joints)	ASTM D 4068	Waterproof	Yes
Shear Strength of surface coating	ASTM C 273	>53.5 PSI	Yes
Flange/Fixture seal ( Joints to wedi wall panel)	IAPMO PS 46	waterproof, no separation	Yes
1. 300 lbs loads placed on floor unit		No damage to unit, no water leakage in unit or at sealed joints	Yes
2. Joint Adhesion Test		Unit did not disassemble, no cracks, no leakage at seams	Yes
Fungus & Microorganism Resistance	IAPMO PS 46	No growth on any test specimen	Yes
Flexural Strength	ASTM C 203	252 PSI	Yes
Tensile Strength	ASTM D 1623	59 PSI	Yes
Linear Coefficient of Thermal Expansion	ASTM D 696	0.00 Btu in/hr ft <sup>2</sup> °F	Reference
R- Value @ 75 °F; Thermal Insulation Value	ASTM C 518	4.5 hr ft <sup>2</sup> /Btu/in	Reference
Temperature Exposure Limits	N/A	neg. 58 °F / pos. 167°F	Reference

State & Local Approvals are available upon request.

wedi has tested products separately as well as in their wedi kit / wedi system assembly.

### **Additional Technical Properties**

**Core Material:** Extruded polystyrene closed cell rigid foam

**Coating:** Epoxy basis, quartz sanded

**Drain System:** Oatey no calk compression fit system for 2" schedule 40 pipe/equipment for sealing to cast iron or copper pipe available upon request.

**Full Field Assembly System Approvals:** IPC and UPC Compliant; ICC -ES PMG

Special Sealing gaskets for installations already under drain system to cast iron or copper drains are available upon request.

### **General Limitations**

wedi EcoBath Fundo One-Step Shower System should not be cut to fit a custom situation on site. Interior use only. Product must not be exposed to temperatures exceeding 175 Fahrenheit

### **Storage**

Store dry and on flat surface. Do not expose to the elements.

### **Disposal**

Upon removal with attached building materials the product must be disposed in appropriate construction site waste containment.

### **Warranty**

Log onto [www.wedicorp.com](http://www.wedicorp.com) to learn more about wedi's warranty.

### **MasterFormat™ 2004 Sections**

Section 09305 Tile Setting Materials and Accessories

Section 10185: Shower Compartments

Section 09300: Tile

**Product Order Information**

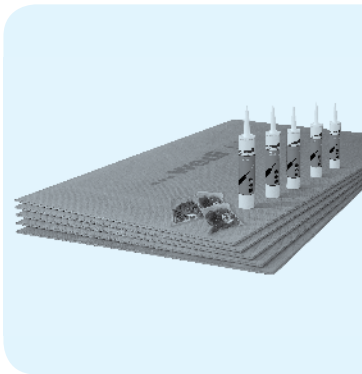
**wedi EcoBath | Fundo One-Step Shower System**



Description	External Dimensions Length x Width x Height	Unit	Item #
EcoBath Fundo One-Step Shower Base	36" x 36" x 4", center drain	1 pc	12-07-37/507
EcoBath Fundo One-Step Shower Base	36" x 48" x 4", center drain	1 pc	12-07-37/516
EcoBath Fundo One-Step Shower Base	32" x 60" x 4", center drain	1 pc	12-07-37/532
EcoBath Fundo One-Step Shower Base	36" x 60" x 4", center drain	1 pc	12-07-37/506
EcoBath Fundo One-Step Shower/Tub Replacement Base	36" x 60" x 4", left drain	1 pc	12-07-37/520
EcoBath Fundo One-Step Shower/Tub Replacement Base	36" x 60" x 4", right drain	1 pc	12-07-37/530

To complement, also please consider:

**wedi EcoBath | Tub Surround Kit**



Description	Kit Contents	Unit	Item #
EcoBath Tub Surround Kit	(5) wedi 3' x 5' x 1/2" Building Panels (5) wedi Joint Sealant, 10.5 oz 100 ct. of wedi Tab Steel Washers 100 ct. of wedi Galvanized Screws	1 kit	12-07-37/001

Download technical drawings from [www.wedicorp.com](http://www.wedicorp.com)



Be sure to ask for a Certified wedi Installer.



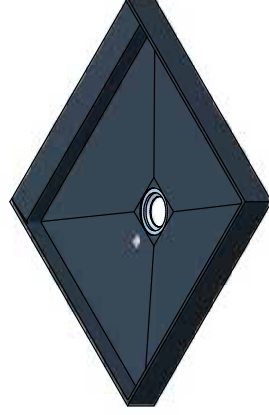
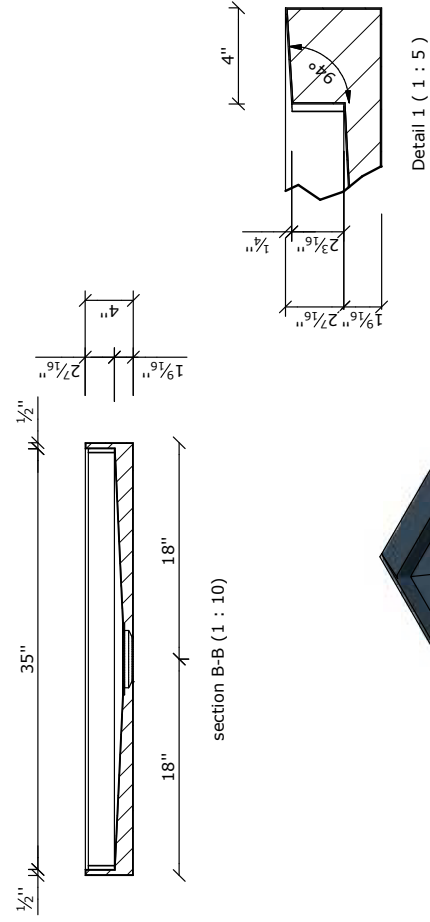
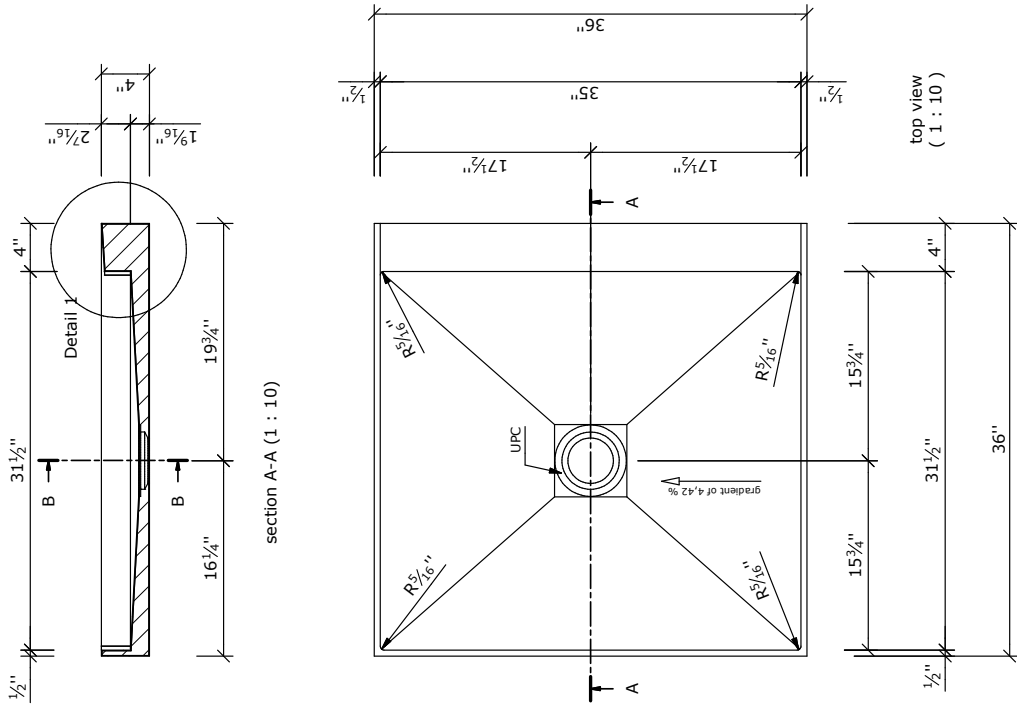
Contact us: [info@wedicorp.com](mailto:info@wedicorp.com)  
Find wedi products & specs: [www.arcacat.com](http://www.arcacat.com)





Das ist eine Zeichnung / Skizze des Eigentums der wedi GmbH und unterliegt dem Urheberrecht. Die Verwendung bedarf in jedem Fall der vorherigen, schriftlichen Zustimmung der wedi GmbH.

This drawing and its copyrights are owned by wedi GmbH. The use of this drawing is subject to prior, written authorization by wedi GmbH.



view ( 1 : 15 )

int. ref.-No.: 073735550\_OneStep\_36x36x4\_AZ  
 number of pieces: piece  
 remark:

Z 00 00 57 62  
 Kunde/client : wedi corporation  
 BV/ BP : Art.-Nr.: 07-37-35/550

3D drawing	Datum date	Name name
19.04.2012	ds	
19.04.2012	ds	
CAD/CAM Progr.		
Fertigungsstatus/ Bautoleranzen: finished condition/ tolerances: nach DIN 18202		
B	Bemadungsstil	15.06.2012 ds
A	Standardisierung	08.06.2012 ds
Ausg. issue	Änderung modification	Datum date
	Maße in Zoll dimensions.inch	DIN A3

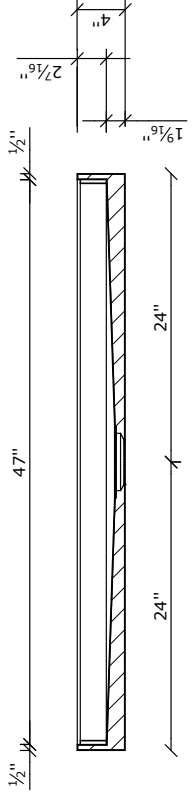
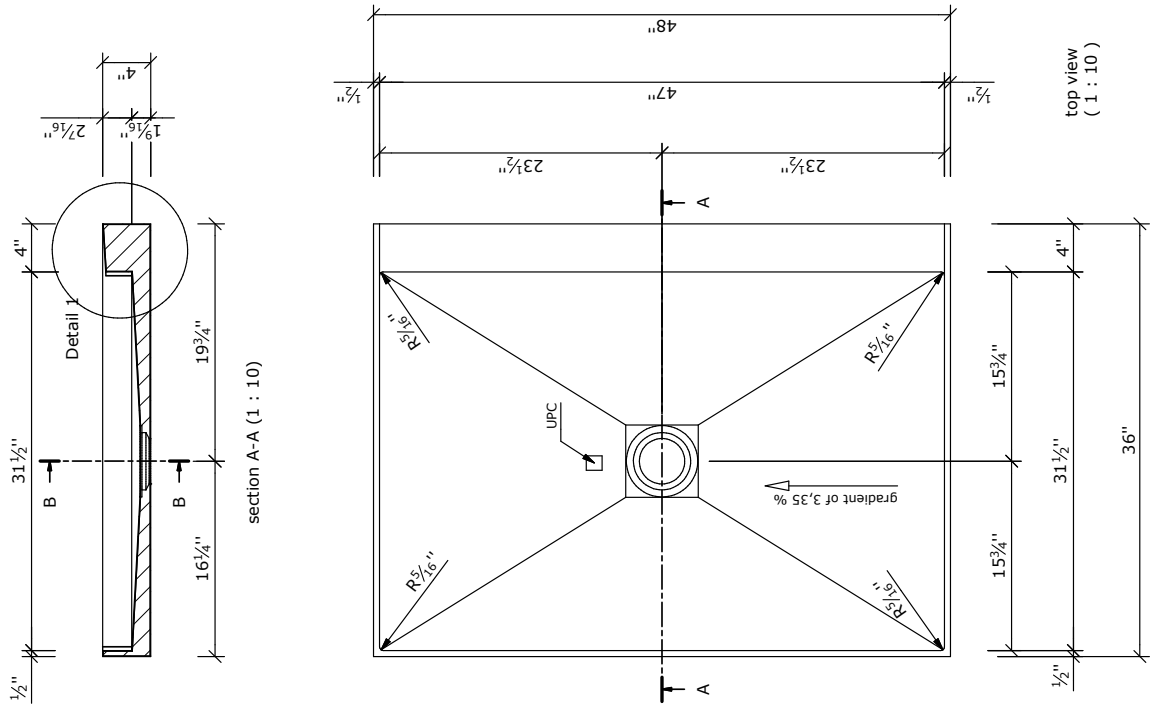
Benennung/ designation  
**wedi OneStep Shower System**  
 dimension: 36 x 36 x 4 Inch / AZ

wedi GmbH  
 Hollefeldstrasse 51  
 48282 Emsdetten  
 wedi-Vertrieb/ sales  
 Fon +49 (0)2572 / 156 - 0  
 Fax +49 (0)2572 / 156 - 133  
 wedi Projektteilung/project dept. Fon +49 (0)2572 / 156 - 0  
 Fax +49 (0)2572 / 156 - 239  
 filename: 073735550\_OneStep\_36x36x4\_AZ.iam

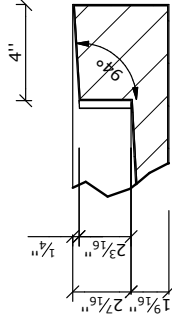


this drawing and its copyrights are owned by wedi GmbH.  
the use of this drawing is subject to prior,  
written authorization by wedi GmbH.

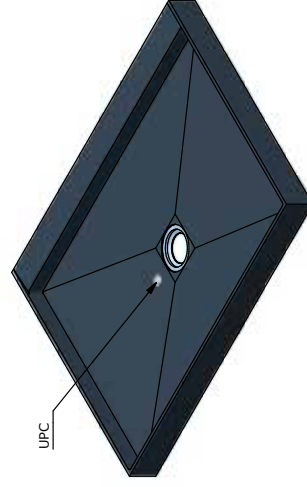
Diese Zeichnung / Skizze ist Eigentum der wedi GmbH und  
unterliegt dem Urheberrecht. Die Verwendung bedarf in jedem  
Fall der vorherigen, schriftlichen Zustimmung der wedi GmbH



section B-B ( 1 : 10 )



Detail 1 ( 1 : 5 )



view ( 1 : 15 )

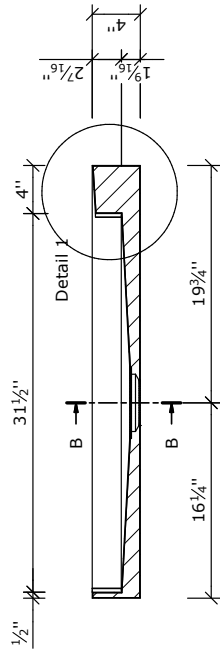
int. ref.-No.: 073735551\_OneStep\_48x36x4\_AZ  
number of pieces: piece  
remark:

Z 00 00 57 63		Kunde/ client : wedi corporation		Art.-Nr.: 07-37-35/551	
Ausg.	Änderung	Datum	Name	Maße in Zoll	DIN A3
issue	modification	date	name	dimensions in inch	
B	Bemandsstil	15.06.2012	ds		
A	Standardisierung	08.06.2012	ds		
Fertigungsstatus/ Bautoleranzen: finished condition/ tolerances: nach DIN 18202		3D drawn	19.04.2012	ds	
		CAD/CAM drawn	19.04.2012	ds	
		Prog.			
Benennung/ designation wedi OneStep Shower System dimension: 48 x 36 x 4 Inch / AZ					
wedi GmbH Hollefeldstrasse 51 48282 Emsdetten Fon +49 (0)2572 / 156 - 0 Fax +49 (0)2572 / 156 - 133 wedi Vertrieb/ sales wedi Projektteilung/project dept. Fon +49 (0)2572 / 156 - 0 Fax +49 (0)2572 / 156 - 239 filename: 073735551_OneStep_48x36x4_AZ.dwg					

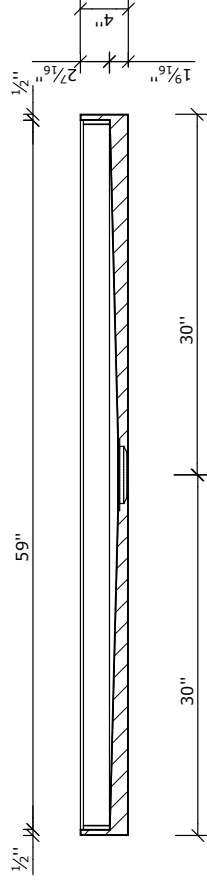
top view  
( 1 : 10 )

Diese Zeichnung / Skizze ist Eigentum der wedi GmbH und unterliegt dem Urheberrecht. Die Verwendung bedarf in jedem Fall der vorherigen, schriftlichen Zustimmung der wedi GmbH.

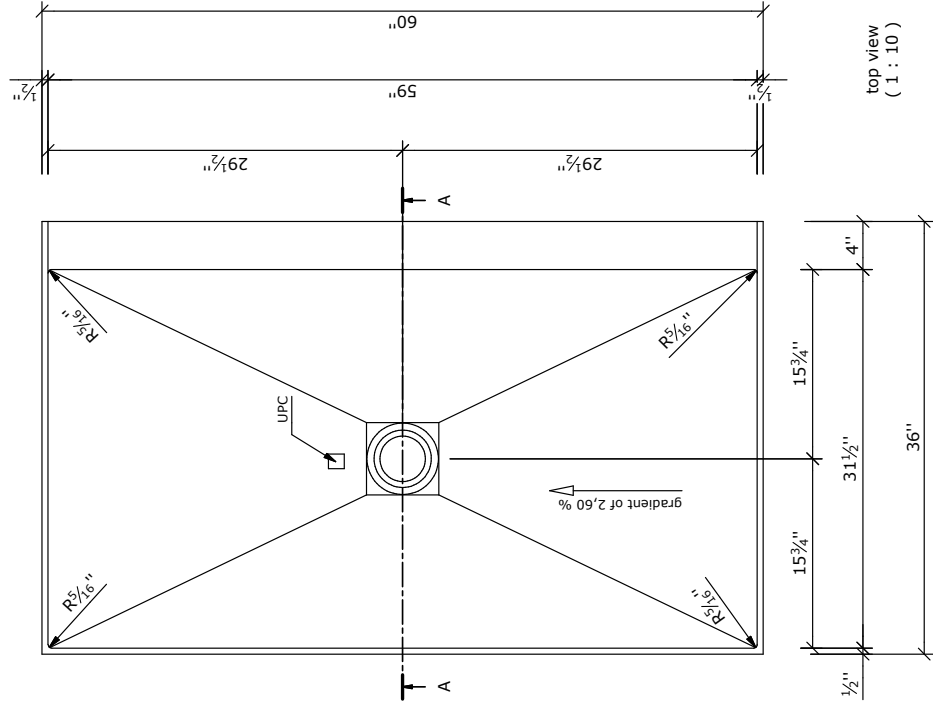
this drawing and its copyrights are owned by wedi GmbH. the use of this drawing is subject to prior, written authorization by wedi GmbH.



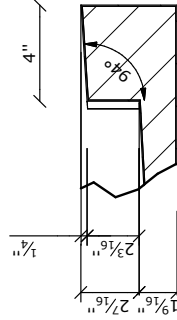
section A-A (1 : 10)



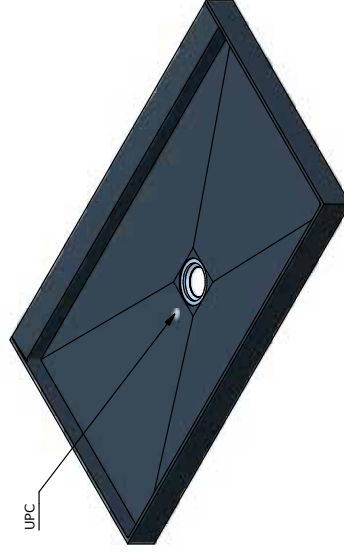
section B-B (1 : 10)



top view (1 : 10)



Detail 1 (1 : 5)



view (1 : 15)

int. ref.-No.: 073735552\_OneStep\_36x60x4\_AZ  
 number of pieces: piece  
 remark:

Z 00 00 57 64  
 Kunde/client : wedi corporation  
 BV/ BP :  
 Art.-Nr.: 07-37-35/552

Benennung/ designation  
**wedi OneStep Shower System**  
 dimension: 36 x 60 x 4 Inch / AZ

Ausg.	Änderung	issue	modification	Datum	date	Name	name
B	Bemabundisierug	15.06.2012	ds				
A	Standardisierung	08.06.2012	ds				

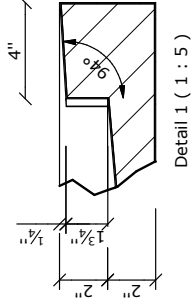
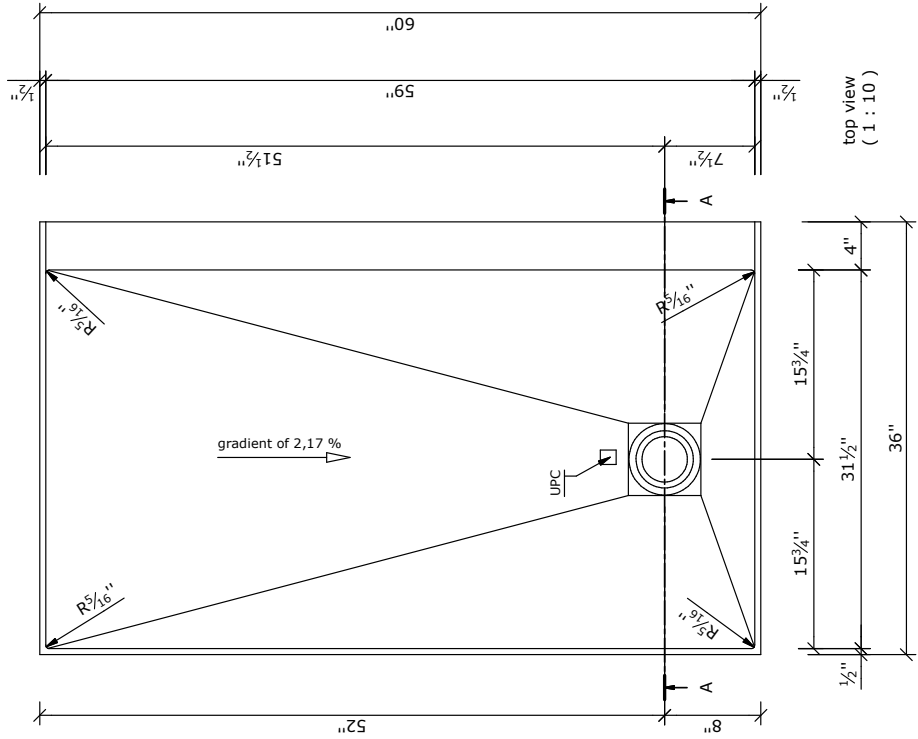
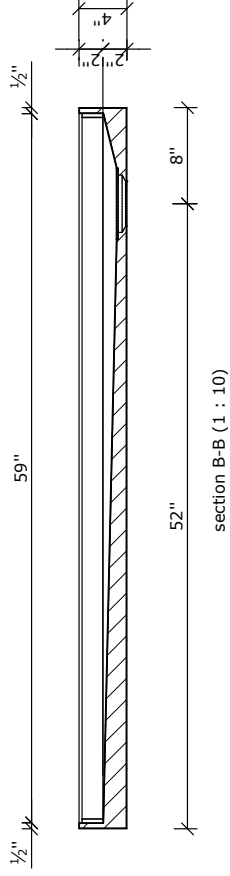
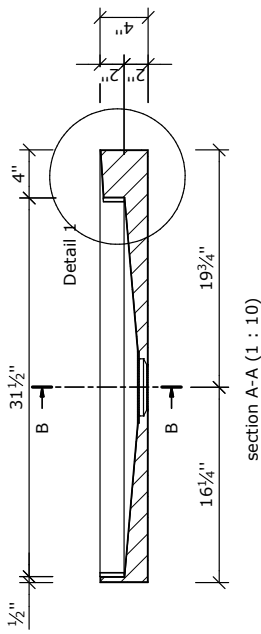
Fertigungszustand/ Bautoleranzen:  
 finished condition/ tolerances:  
 nach DIN 18202

Maße in Zoll	dimensions in inch
DIN A3	

wedi GmbH  
 Hollefeldstrasse 51  
 48282 Emsdetten  
 wedi Vertrieb/ sales  
 Fon +49 (0)2572 / 156 - 0  
 Fax +49 (0)2572 / 156 - 133  
 wedi Projektteilung/project dept. Fon +49 (0)2572 / 156 - 0  
 Fax +49 (0)2572 / 156 - 239  
 filename: 073735552\_OneStep\_36x60x4\_AZ.iam

this drawing and its copyrights are owned by wedi GmbH.  
the use of this drawing is subject to prior,  
written authorization by wedi GmbH.

Diese Zeichnung / Skizze ist Eigentum der wedi GmbH und  
unterliegt dem Urheberrecht. Die Verwendung bedarf in jedem  
Fall der vorherigen, schriftlichen Zustimmung der wedi GmbH



int. ref.-No.: 073735553\_OneStep\_60x36x4\_ADZ\_L  
number of pieces: piece  
remark:

Z 00 00 57 65  
Kunde/ client : wedi corporation  
BV/ BP :  
Art.-Nr.: 07-37-35/553

3D drawn	Datum date	Name name
ds	19.04.2012	ds
drawn CAD/CAM Progr.	19.04.2012	ds
Fertigungsstatus/ Bautoleranzen: finished condition/ tolerances: nach DIN 18202		
B	Bemabstimmung	15.06.2012 ds
A	Standardisierung	08.06.2012 ds
Issue	Modification	ds
Maße in Zoll dimensions in inch		DIN A3

Benennung/ designation  
**wedi OneStep Shower System**  
dimension: 36 x 60 x 4 Inch / ADZ\_L

**wedi**  
wedi GmbH  
Hollefeldstrasse 51  
48282 Emsdetten  
wedi Vertrieb sales  
Fon +49 (0)2572 / 156 - 0  
Fax +49 (0)2572 / 156 - 133  
wedi Projektteilung/project dept. Fon +49 (0)2572 / 156 - 0  
Fax +49 (0)2572 / 156 - 239  
filename: 073735553\_OneStep\_60x36x4\_ADZ\_L.kim



