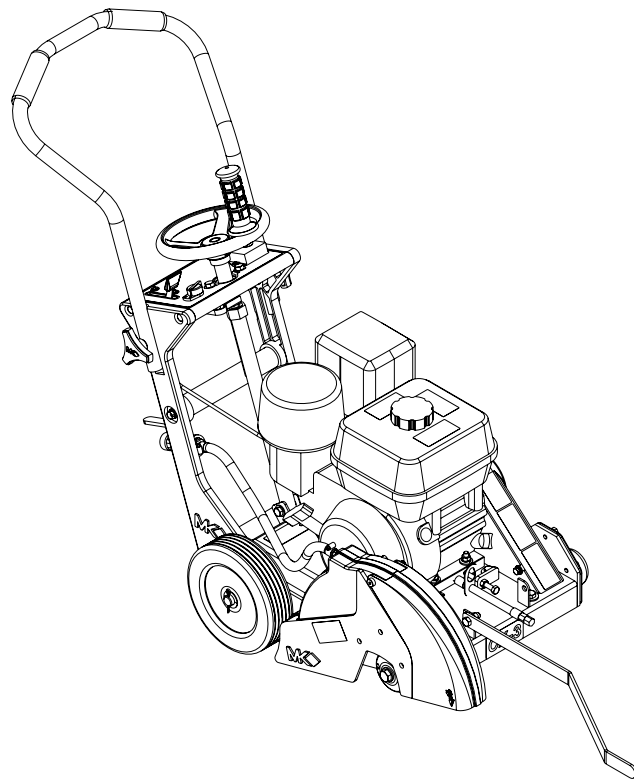


**MK DIAMOND CX-3,
WITH CH270 ENGINE
WALK-BEHIND CONCRETE SAW
PARTS LIST & EXPLODED VIEWS**



Revision 101	05.2013
Manual 167955-PM	

Caution: Read all safety and operating instructions before using this equipment. This parts list **MUST** accompany the equipment at all times.

TABLE OF CONTENTS

MK DIAMOND CX-3 WITH CH270 ENGINE

PAGE

INTRODUCTION

	NO.
Welcome	4
Safety Warnings	4

PARTS LIST

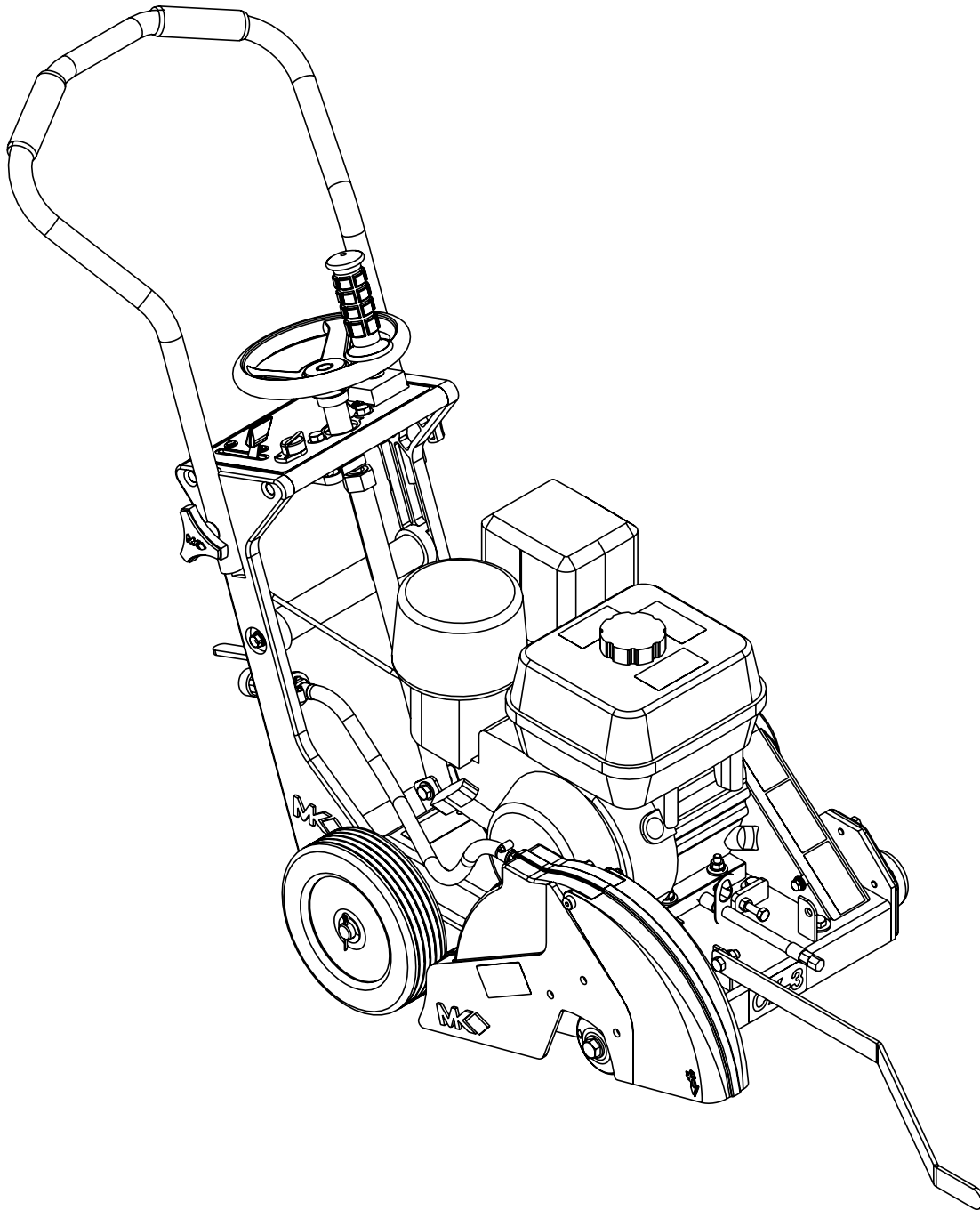
Exploded View Saw Assembly Part# 167955	6
Parts List	7
Exploded View Part# 165974	8
Parts List	9
Exploded View Part# 165974	10
Parts List	11
Exploded View Part# 165974	12
Parts List	13
Exploded View Axle Part# 165975	14
Parts List	14
Exploded View Blade Shaft Part# 165977	15
Parts List	15
Exploded View Belt Assembly Part# 167955	16
Parts List	16

GENERAL PRODUCT INFORMATION

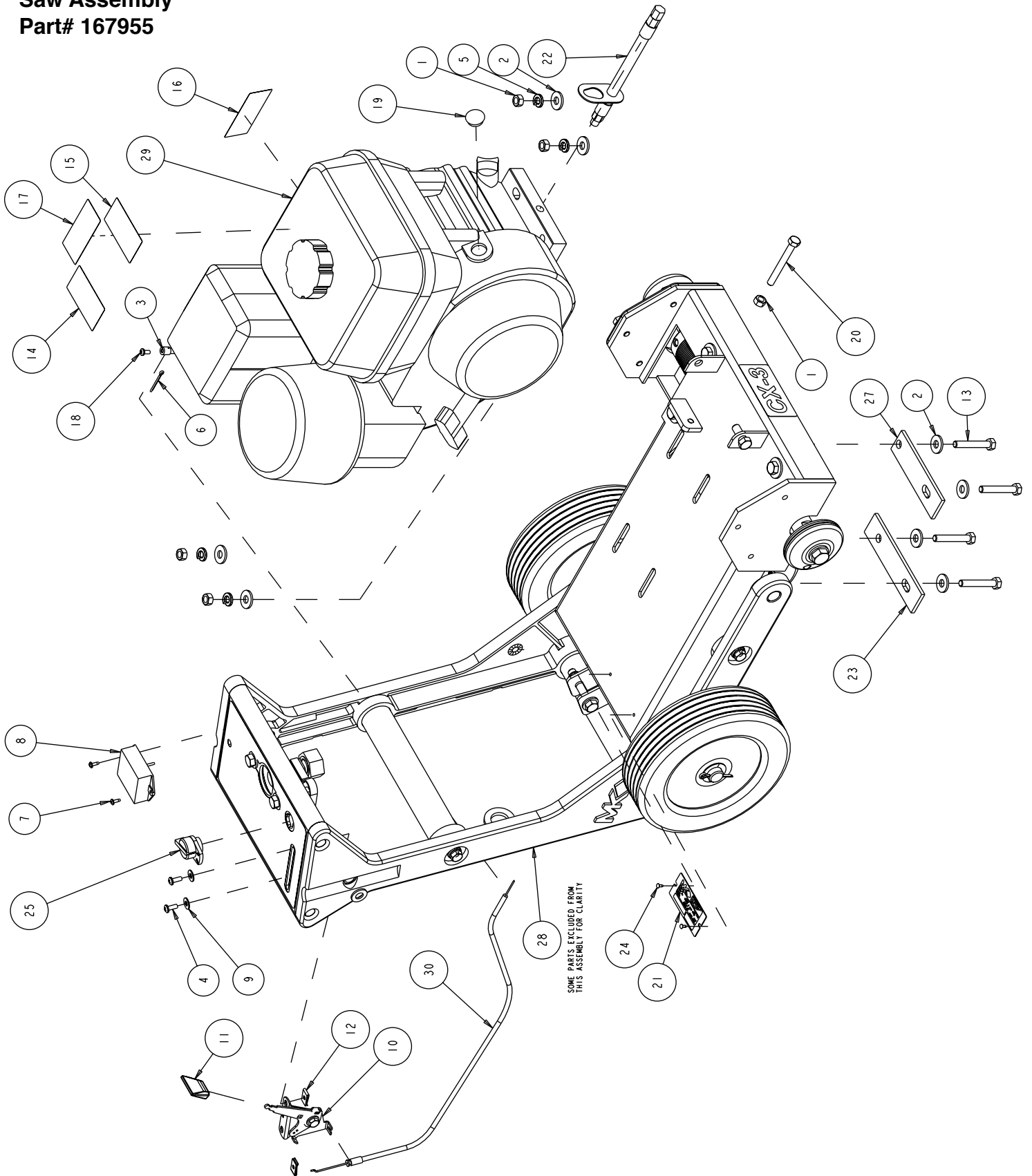
Accessories, Ordering and Return Information	18
Contact Information and Limited Warranty	19

NOTES

NOTES

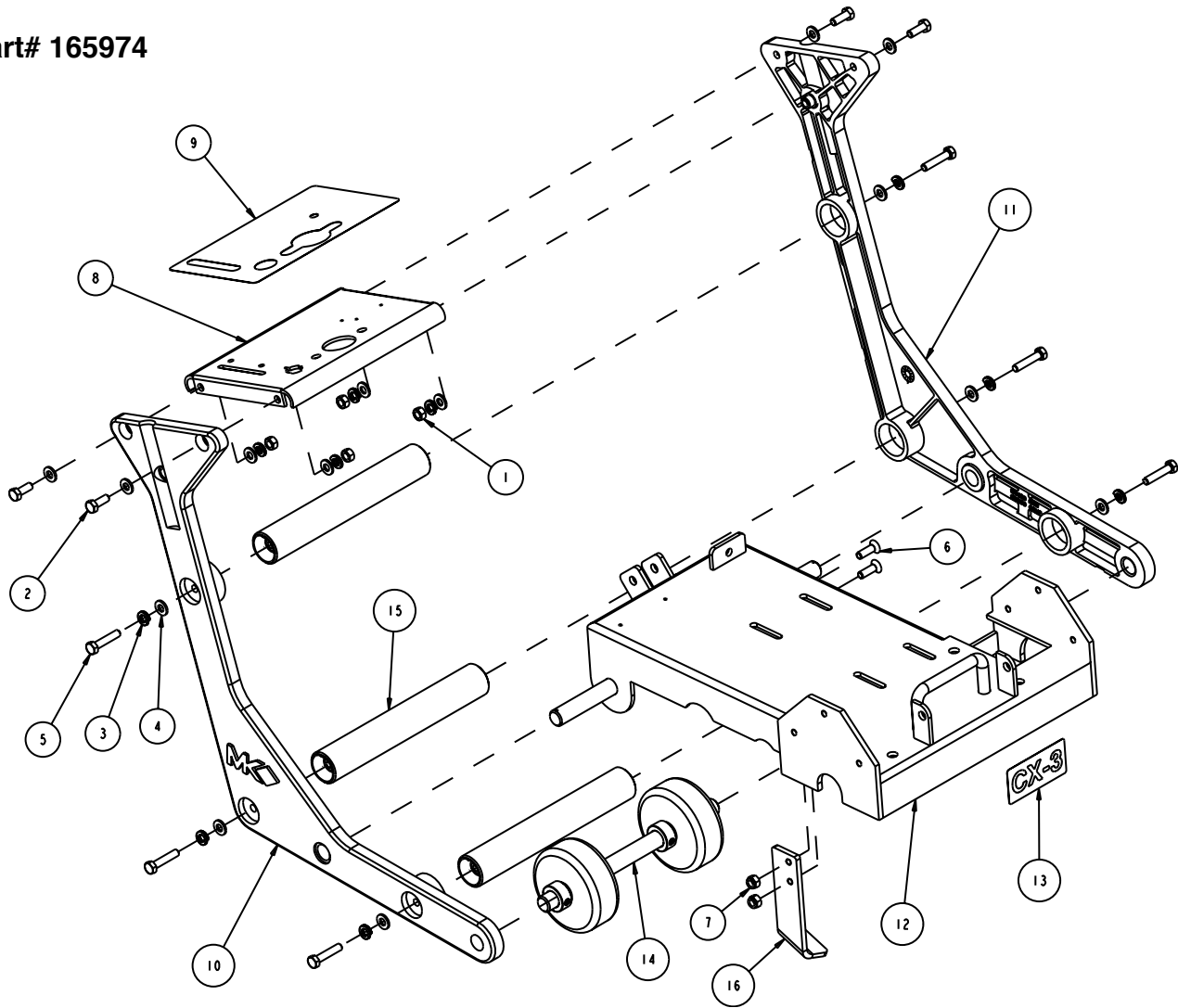


Saw Assembly
Part# 167955



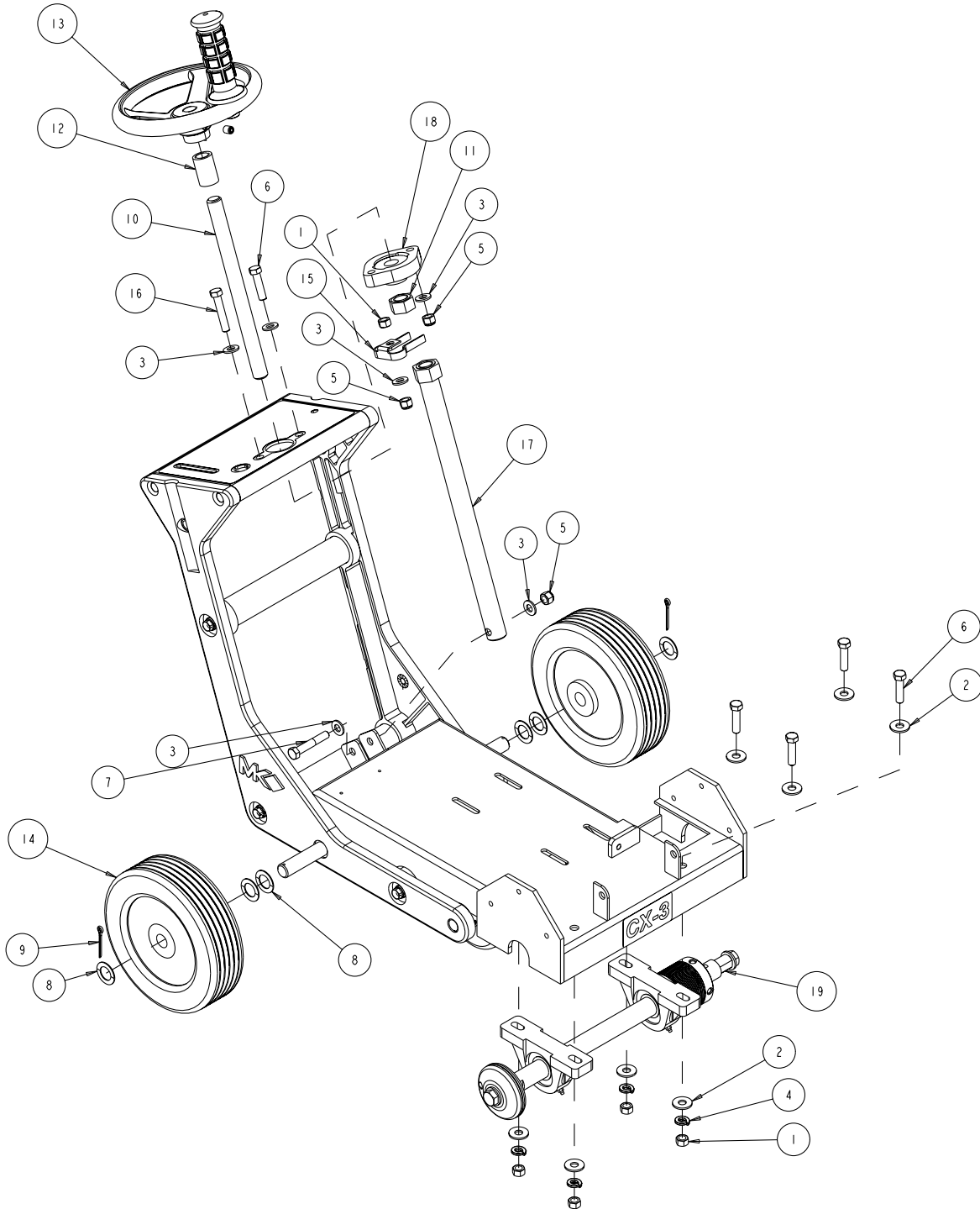
ITEM	DESCRIPTION	QTY.	PART#
1	NUT, HEX, 5/16 - 18	5	101196
2	WASHER, 5/16 FLAT CUT	8	101352
3	PIN, THROTTLE CONTROL	1	151284
4	SCREW, 10 - 24 X 1/2 PAN HEAD PHILLIPS MACHINE	2	151744
5	WASHER, LOCK, SPLIT, 5/16	4	151747
6	PIN, 1/16 X 3/4 COTTER	1	152518
7	SCREW, #6 - 32 X 3/8 PAN HEAD SELF TAPPING	2	153466
8	TACHOMETER/HOURMETER	1	153877
9	WASHER, #10 SAE FLAT	2	154369
10	HEAD, THROTTLE CONTROL	1	155406-1
11	KNOB, THROTTLE PADDLE	1	155406-2
12	NUT, 10-24 CLIP	2	155407
13	SCREW, 5/16 - 18 X 2 HEX HEAD	4	155494
14	LABEL, CAUTION, HOT SURFACE	1	155578
15	LABEL, WARNING, REFUELING	1	155580
16	LABEL, DANGER, CALIFORNIA	1	155581
17	LABEL, DANGER, LETHAL EXHAUST	1	155582
18	SCREW, 8 - 32 X 3/8 PAN HEAD PHILLIPS	1	156614
19	PLUG, HOLE PLASTIC 3/4"	1	156615
20	BOLT, 5/16 - 18 X 2-3/4 HEX HEAD TAP	1	156974
21	TAG, SERIAL #, BLANK	1	157500
22	ASSY, OIL DRAIN, 10MM	1	157577-01
23	PLATE, ENGINE BOLT	1	157847
24	DRIVE SCREW, #7 X 5/16 ROUND HEAD	2	157849
25	SWITCH, ENGINE ON/OFF, HONDA	1	157851
26	WIRE HARNESS, CX-3	1	158232
27	PLATE, ENGINE BOLT, FRONT	1	159868
28	MK-CX-3 LESS ENGINE	1	165974
29	ENGINE, KOHLER 7HP, CH270	1	167954
30	CABLE, THROTTLE, MODIFY	1	168262

Part# 165974



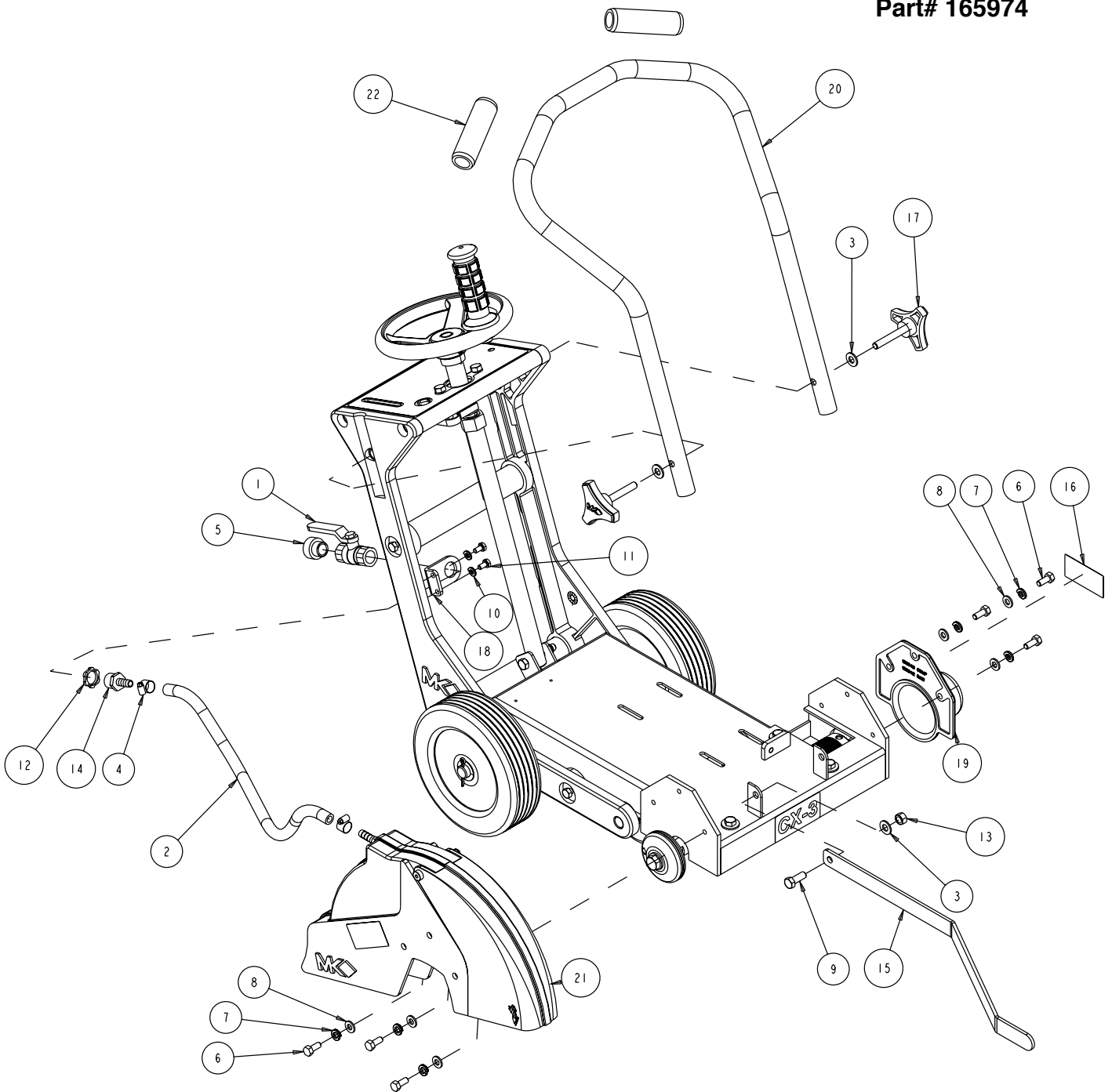
ITEM	DESCRIPTION	QTY.	PART#
1	NUT, 5/16-18 HEX	4	101196
2	SCREW, 5/16-18 X 1 HEX HEAD MACHINE	4	151743
3	WASHER, 5/16 SPLIT LOCK	10	151747
4	WASHER, 5/16 SAE FLAT	14	151754
5	SCREW, 5/16-18 X 1-1/2 HEX HEAD MACHINE	6	152467
6	SCREW, 5/16-18 X 1.0 FLAT HEAD SOCKET	2	155552
7	NUT, 5/16-18 NYLOK HEX	2	158289
8	CONSOLE, FRAME	1	158828
9	LABEL, CONSOLE, CX3	1	159208
10	CASTING, FRAME, RIGHT CX3-COMP	1	159257
11	CASTING, FRAME, LEFT CX3-COMP	1	159259
12	TRUCK, CX3	1	159260
13	LABEL, CX3	1	159482
14	ASSY, FRONT AXLE	1	165975
15	ASSY, FRAME SUPPORT	3	165978
16	BRACKET, UP STOP	1	165998

Part# 165974



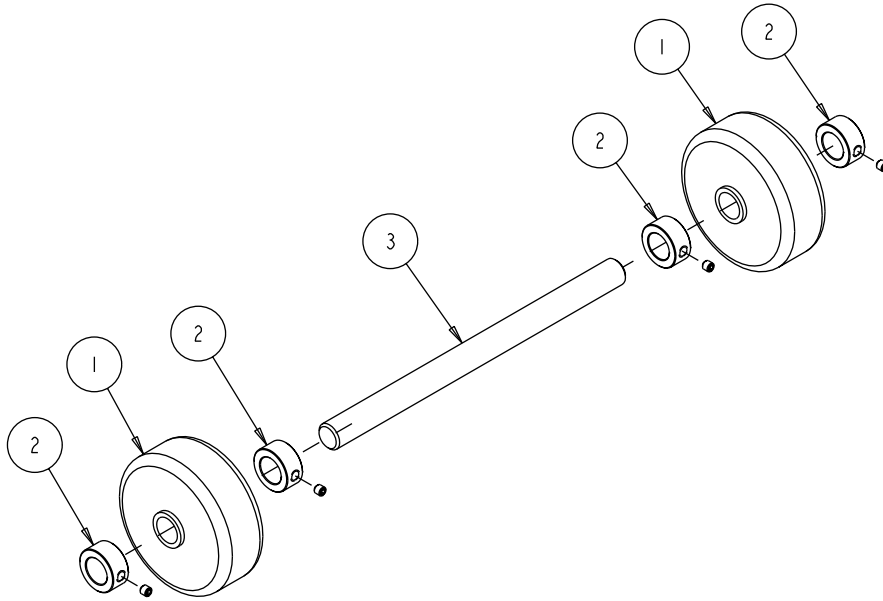
ITEM	DESCRIPTION	QTY.	PART#
1	NUT, 3/8-16 HEX	5	101188
2	WASHER, FLAT CUT 3/8	8	101360
3	WASHER, 3/8 SAE FLAT	6	150923
4	WASHER, 3/8 SPLIT LOCK	4	150925
5	NUT, 3/8-16 NYLOK HEX	3	152505
6	SCREW, 3/8-16 X 1-1/2 HEX HEAD	5	153528
7	SCREW, 3/8-16 X 2-1/4 HEX HEAD	1	153529
8	SHIM, .045 THK .750 ID 1.250 OD	6	153699
9	PIN, COTTER 1/8 X 1 1/2	2	153861
10	STUD, 3/4-10 X 7"	1	167980
11	NUT, 3/4-10 HEX	1	155063
12	SPACER, DEPTH CONTROL	1	155161
13	ASSY, CRANK WHEEL, 3/4-10	1	155457
14	WHEEL, REAR 8"	2	155986
15	SPRING, DETENT	1	156609
16	SCREW, 3/8-16 X 2 HEX HEAD	1	156829
17	TUBE, DEPTH CTRL, 3/4-10	1	165970
18	BEARING, FLANGE, 3/4ID, FD204	1	165971
19	ASSY, BLADE SHAFT	1	165977

Part# 165974



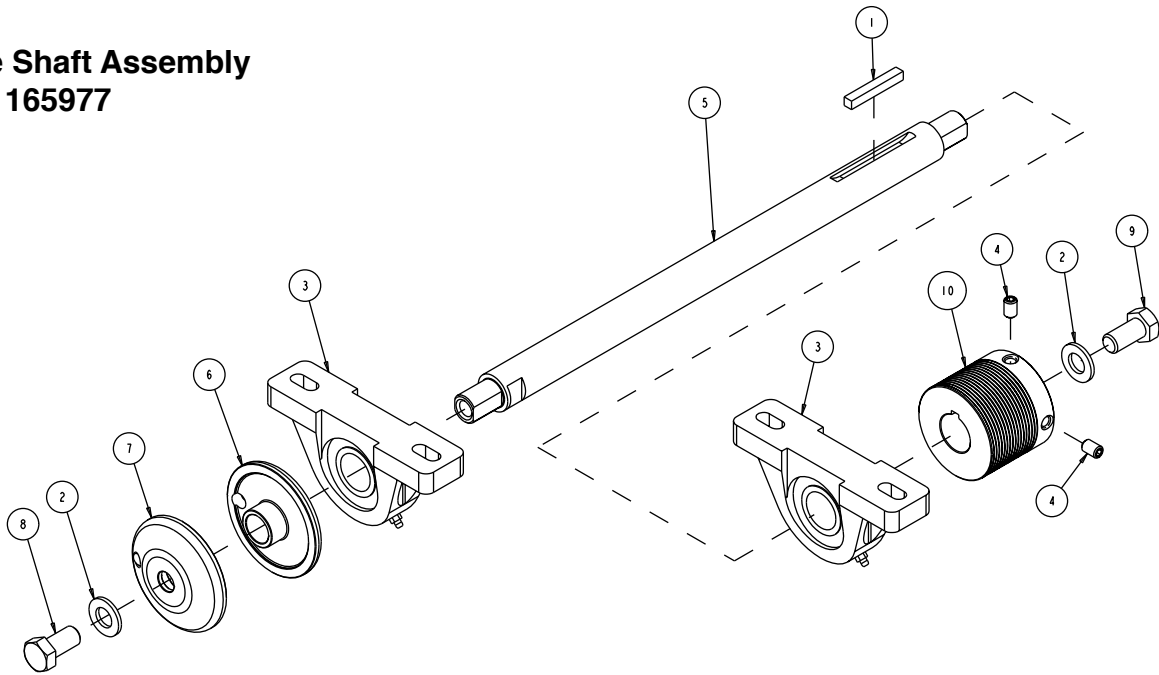
ITEM	DESCRIPTION	QTY.	PART#
1	VALVE, BALL 1/2"	1	150843
2	HOSE, 3/8 X 5/8 VINYL, 30"	1	150845-08
3	WASHER, 3/8 SAE FLAT	3	150923
4	CLAMP, 5/8 HOSE	2	151198
5	FITTING, 1/2 MNPT X 3/4 FNH	1	151322
6	SCREW, 5/16-18 X 3/4 HEX HEAD MACHINE	3	151369
7	WASHER, LOCK, SPLIT, 5/16	3	151747
8	WASHER, 5/16 SAE FLAT	6	151754
9	SCREW, HEX HD CAP, 3/8-16 X 1	1	152507
10	WASHER, 1/4 SPLIT LOCK	2	152591
11	SCREW, 1/4-20 X 1/2 HEX HEAD	2	152608
12	NUT, LOCK STEEL 1/2" NPT	1	152729
13	NUT, 3/8-16 HEX CENTERLOCK	1	153522
14	FITTING, 1/2 MNPT X 3/8 BARB	1	153653
15	POINTER, ONE-PIECE	1	155568
16	LABEL, CAUTION, GUARDS IN PLACE	1	155587
17	KNOB, TRI	2	156770-04
18	BRACKET, WATER VALVE	1	158833
19	GUARD, SHAFT (COMP)	1	158843
20	HANDLEBAR	1	158849
21	ASSY, 14" BLADEGUARD	1	165976
22	GRIP, HANDLE	2	229413

**Axle Assembly
Part# 165975**



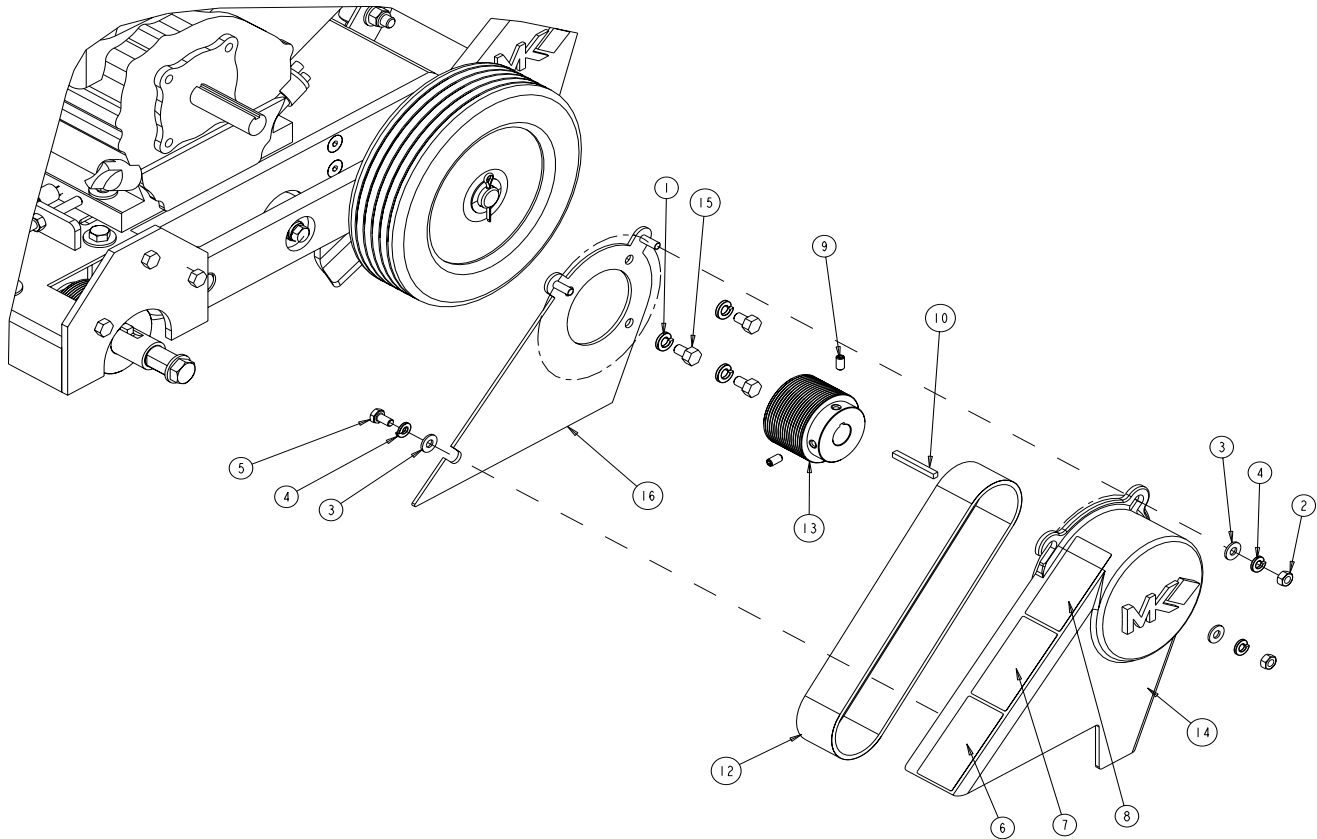
ITEM	DESCRIPTION	QTY.	PART#
1	WHEEL, FRONT, 04 X 1-1/2W	2	150830
2	COLLAR, SET, 3/4"	4	153814
3	AXLE, FRONT	1	158862

Blade Shaft Assembly
Part# 165977



ITEM	DESCRIPTION	QTY.	PART#
1	KEY, SQUARE, 1/4 X 1-3/4	1	150796
2	WASHER, 1/2 SAE FLAT	2	150924
3	BEARING, PILLOW BLK 1"	2	155072
4	SCREW, 5/16-18 X 3/8 SOCKET HEAD SET	2	157084
5	SHAFT, BLADE	1	158879
6	FLANGE, INNER	1	158880
7	ASSY, FLANGE, OUTER	1	158881
8	SCREW, 1/2-13 X 1 HEX HEAD CAP, LH	1	159203
9	SCREW, 1/2-13 X 1 HEX HEAD CAP	1	159204
10	PULLEY, 16J25 X 1.0 BORE	1	161136

**Belt Assembly
Part# 167955**



ITEM	DESCRIPTION	QTY.	PART#
1	WASHER, LOCK, SPLIT, 5/15	3	151747
2	NUT, 1/4 - 20 HEX	2	151893
3	WASHER, 1/4 SAE FLAT	3	151915
4	WASHER, 1/4 SPLIT LOCK	3	152591
5	SCREW, 1/4 - 20 X 1/2 HEX HEAD	1	152608
6	LABEL, CAUTION, DISCONNECT SPRKPLG	1	155579
7	LABEL, CAUTION, BELT TENSION	1	155583
8	LABEL, CAUTION, GUARDS IN PLACE	1	155587
9	SCREW, 1/4 - 20 X 1/2 SOCKET HEAD SET	2	155804
10	KEY, 3/16 X 3/16 X 1-3/4	1	157561
11	WIRE HARNESS, CX-3®	1	158232
12	BELT, MICRO-V, 240J16	1	158824
13	PULLEY, 16J25 X .75 BORE	1	158959
14	CASTING, BELT GUARD, CX-3 COMP	1	159021
15	SCREW, 5/15 - 24 X 1/2 HEX HEAD MACHINE	3	159205
16	GUARD, INNER BELT	1	159250

NOTES

ORDERING INFORMATION

You may order MK Diamond products through your local MK Diamond distributor or, you may order direct from MK Diamond.

When ordering direct from MK Diamond, please have the following information ready before calling:

- The Model Number of the saw
- The Serial Number of the saw
- Where the saw was purchased and when
- The Part Number for the part(s) being ordered
- The Part Description for the part(s) being ordered

NOTE: There is a \$25.00 minimum order when ordering direct from MK Diamond. A \$6.00 charge will be added to orders having a net billing value under \$50.00. All purchases must be made using VISA, MasterCard or American Express.

All parts may be ordered by calling toll free to – 800 421-5830 or 310 539-5221 and asking for Customer Service. For technical questions, call – 800 474-5594.

RETURN MATERIALS POLICY

To expedite the service relative to the return of a product purchased through MK Diamond, please observe the following:

NOTE: When returning all items, they must have been purchased within the previous twelve (12) months.

- Have the Model Number of the saw
- Have the Serial Number of the saw
- Have the location of where the saw was purchased
- Have the date when the saw was purchased
- Contact Customer Service for approval to return the item(s)
- Obtain a Returned Goods Number (RGA) authorizing the return
- Follow the packaging instructions in the following section
- Ensure your item(s) are prepaid to the destination

For returned items, call toll free to – 800 421-5830 or 310 539-5221 and ask for Customer Service. For technical questions, call – 800 474-5594 or 310 257-2845.

PACKAGING INSTRUCTIONS

- Remove the Cutting Head and Support Angle Assembly
- Dry the saw before shipping
- When packing, include the following: Saw, Diamond Blade, Blade Guard and Support Angle Assembly and Adjustable Cutting Guide (Other Accessories are not required)
- Package the unit in its original container or one of comparable size (do not ship the unit partially exposed)
- Ensure all parts are secured in the packaging to prevent moving

AUTHORIZED SERVICE CENTERS

For quicker repair time, you may contact MK Diamond Customer Service, toll free, at 800 421-5830 or 310 539-5221 for the Authorized Service Center closest to you or visit our web site at www.mkdiamond.com. For technical questions, call – 800 474-5594.

CONTACT

Please contact MK Diamond Products, Inc. Customer Service Department with any questions you might have regarding distributors, parts or service.

Telephone: **(800) 421-5830**

Fax: **(310) 539-5158**

E-mail: **Customer_Service@MKDiamond.com**

Customer Service Hours: **Monday through Friday, 6AM-4PM PST**

MK Diamond Products, Inc.

1315 Storm Parkway

Torrance, CA 90501

MK DIAMOND PRODUCTS, INC. LIMITED WARRANTY

MK DIAMOND PRODUCTS, INC. will guarantee every machine they build, to be free from defects in material and workmanship for (1) one year from date of purchase. The obligation of MK DIAMOND PRODUCTS, INC. under this warranty is limited to the repair or replacement of any parts which, under normal use, prove to be defective in material or workmanship. The parts involved or the unit in question should be returned to MK DIAMOND PRODUCTS, INC. or to a point designated by us, transportation prepaid.

This warranty does not obligate us to bear the cost of labor or transportation charges in connection with replacement or repair of defective parts. Likewise, it shall NOT apply to any unit which has been subjected to misuse, neglect or accident. This warranty does NOT apply to any machine which has been repaired or altered outside our factory.

This warranty does NOT obligate MK DIAMOND PRODUCTS, INC., with respect to items not of our manufacture, such as engines, motors, hydraulics, etc., which are subject to their own guarantees and warranties.

We shall in no event be liable for consequential damages or contingent liabilities arising out of failure of any equipment or parts to operate properly.

© COPYRIGHT 2012, MK DIAMOND PRODUCTS, INC. ALL RIGHTS RESERVED.

The MK Diamond logo is a registered trademark of MK Diamond Products, Inc. and may not be used, reproduced, or altered without written permission. All other trademarks are the property of their respective owners and used with permission.

MK Diamond may have patents, patent applications, trade marks, copyrights of other intellectual property right covering this product in this document.

This manual MUST accompany the equipment at all times. This manual is considered a permanent part of the equipment and should remain with the unit if resold.

The information and specifications included in this publication were in effect at the time of approval for printing.

MK DIAMOND CX-3, WITH CH270 ENGINE
PARTS LIST & EXPLODED VIEWS



MK Diamond Products, Inc.

MK Diamond Products, Inc.
1315 Storm Parkway
Torrance, CA 90501

Toll-Free: (800) 845-3729
Phone: (310) 539-2221
Fax: (310) 539-5158
www.mkdiamond.com