



2019-2020 PRODUCT CATALOG

ProKnee[®] SINCE 1989
MADE IN USA
CUSTOM MADE CUSTOM FIT KNEEPADS

OUR STORY

Since 1989, ProKnee has been servicing the needs of flooring installation and other construction professionals by offering a complete line of custom made custom fit kneepads. It all began with the Original Model, which sold for 18 years and offered several patent pending features, placing it in a class all by itself. In 2007, after adding several more patented features, the Model 07 was born. In 2014, after 25 years of customer feedback and actual field testing, ProKnee proudly introduced the Model 0714 Standard and Model 0714E Wide. These new models are patented, hybrid versions, of the highly successful Original Model and Model 07 Kneepads.

In 2016, ProKnee revealed a new class of All Purpose Kneepads, the AP16. This compact design is a one of a kind that stays true to ProKnee's form, fit and function by using as many of the Model 0714 features as possible, along with a few patent pending features of its own.

By offering a complete range of kneepads, we can now match a customer's desired comfort to a level of protection unrivaled in today's kneepad market. After over 30 years of specializing in occupational knee injury prevention, we are humbled to find that ProKnee has grown into THE #1 KNEEPAD that professionals in the USA, Canada and around the world prefer.



1ST PAIR SOLD 8-18-1988



PRO STATS & REVIEWS

SIX MILLION SQUARE FEET

JAY
HEIGHT: 6' 8"
WEIGHT: 215 LBS
AB SIZE: 24.5"
C MEASURE: 14.5"
MODEL 0714
STANDARD

NATE
HEIGHT: 5' 10"
WEIGHT: 230 LBS
AB SIZE: 21.5"
C MEASURE: 17.5"
MODEL 0714E
WIDE

CHRIS
HEIGHT: 5' 6"
WEIGHT: 195 LBS
AB SIZE: 21"
C MEASURE: 14.5"
MODEL 0714
STANDARD

LAUREN
HEIGHT: 6' 1"
WEIGHT: 225 LBS
AB SIZE: 22"
C MEASURE: 16"
MODEL 0714
STANDARD

STEVE
HEIGHT: 5' 10"
WEIGHT: 180 LBS
AB SIZE: 21"
C MEASURE: 14"
MODEL 0714
STANDARD

CODY
HEIGHT: 6'
WEIGHT: 330 LBS
AB SIZE: 23"
C MEASURE: 18.5"
MODEL 0714E
WIDE

JORDAN
HEIGHT: 5' 7"
WEIGHT: 140 LBS
AB SIZE: 19"
C MEASURE: 15"
MODEL 0714
STANDARD

**DOES NOT
ONE SIZE ^ FITS X ALL**

**SERVING
PROFESSIONALS IN**

FLOOR COVERING
INDUSTRIAL ROOFING
GENERAL CONTRACTING
MASONRY
CONCRETE

PLUMBERS, PAINTERS,
ELECTRICIANS, MECHANICS,
GARDENERS, HOBBYISTS

**PROUDLY MANUFACTURED
IN WHITEFIELD, MAINE
SINCE 1989**



**USE
ON**

ROLLGOODS



CARPET
LINEOLEUM
VINYL
RUBBER
VCT
TPO/PVC
EPDM

CERAMICS



NATURAL
STONE
MASONRY
FLOOR
PREPARATION
EPOXY
CONCRETE
FLATWORK

STRIPWOODS



NATURAL
PREFINISHED
LAMINATE
DECKING
SUBFLOOR



"I can honestly say I have logged 6 million square feet on my first pair. 20 years doing carpet on concrete at a 66k square foot convention hall... I am on pair number 2, but still bring out the old ones as they are like old friends... ProKnee, happy I can still hike thanks to you."

- Bob Bay
Clifton, NJ

"We appreciate how ProKnee has aligned with our industry to improve our health!"

- Joni Rocco
Parker, CO

"I have been wearing ProKnee for 15 years. They are by far the best kneepad for flooring installers. Before I started using ProKnees, I would have lower back pain all the time, now I don't."

- Vaughn Smith
Orr, MN

"Best set of Kneepads on the market".

- Timothy Clinton
Lakeland, FL

"I install tile full time and I never have sore knees. Yours ARE THE BEST!"

- Rick D. Ross
Bernardston, MA

REBUILDS



"I've had these longer than I can remember. 20 years... maybe more. Did you know when they need a rebuild, they smile at ya?"

- Marty Legarth
Killbuck, OH

THE PROKNEE PROMISE

ProKnee offers a 30 day money back "We Guarantee You'll Love Them" policy assuring your satisfaction with our product. If you would like to return your kneepads for a full refund of the product cost, please see your place of purchase. To exchange a size or width call us at 1-800-549-5018 for a Return Authorization #. There will be a 30% restocking fee for exchanged used/worn kneepads, so be sure to try them on before putting them to work.





WHY DO WE OFFER ALL THESE SIZES?

TO OFFER YOU A SUPERIOR FIT THAT PROVIDES MAXIMUM PROTECTION

THERAPY FOR YOUR KNEES



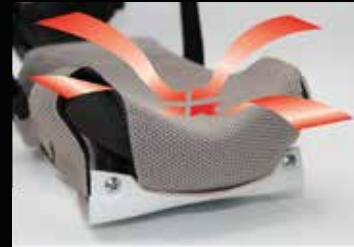
STRAPS, LOCATED WELL BELOW KNEE JOINT, HELP ELIMINATE UNCOMFORTABLE PINCHING AND CIRCULATION ISSUES.



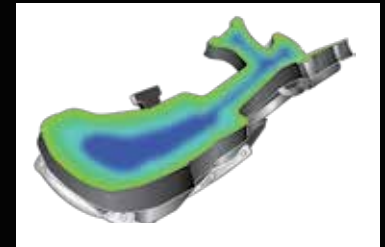
TAKING WEIGHT OFF THE JOINTS AND SPREADING IT OUT OVER THE LENGTH OF THE SHINS ENABLES EVEN WEIGHT DISTRIBUTION.



EVEN WEIGHT DISTRIBUTION CREATES A CENTER OF BALANCE AT THE MIDPOINT OF THE SHINS (RATHER THAN DIRECTLY ON THE KNEES) WHICH REDUCES PRESSURE AND FORCES THE USER TO USE PROPER KNEELING TECHNIQUES.



A KNEE CUP SHAPE SURROUNDS THE KNEE JOINT AREA TO HOLD THE JOINT TIGHT AND CREATE STABILITY AS YOU KNEEL - ON LITERALLY ANYTHING.



SAFE, RESILIENT AND REPLACEABLE CELLULAR URETHANE CUSHIONS, WITH CONSISTENT COMPRESSION SPRINGBACK, HELP ABSORB SHOCK OUT OF DAY TO DAY WEAR AND TEAR FROM KNEELING.

CUSTOM FIT **VS** ALL PURPOSE KNEEPADS FOR ALL COMFORT LEVELS

CHOOSING THE PROPER LENGTH, WIDTH AND MODEL ARE CRITICAL TO ACHIEVING THE BEST COMFORT, HIGHEST PROTECTION AND PERFORMANCE LEVEL FROM OUR LINE OF KNEEPADS. SEE THE COMPARISON BELOW TO FIND OUT WHICH MODEL IS BEST FOR YOU.



0714[®] **0714E[®]**
STANDARD WIDE

CUSTOM FIT KNEEPADS
PATENTED WORLDWIDE

- A PATENTED SHIN SUPPORT SYSTEM that spreads weight across the length of the kneepads and assures kneepads stay in proper position at all times
- 18 LENGTHS that enable strap location well below the knee joint
- 2 WIDTHS in Standard and Wide for an optimal knee cup fit that stabilizes the joint
- ANTI-TWIST CUFF keeps pads from twisting

SHARED FEATURES

- 2 CUSHION THICKNESSES in 5/8" and 1" for ultimate shock absorption and comfort level
- ALL PARTS REPLACEABLE to extend the life of your pads
- NO WRINKLE LINER is hand washable and moisture wicking
- PATENTED KNEE POCKET SHAPE AND FLAT BOTTOM DESIGN stabilize knee joint to reduce joint wear-out and knee burn pain
- RUBBER BOOT with tough 3 ply non-skid and non-marking properties upholds against extreme working conditions

AP16[®]

ALL PURPOSE KNEEPADS
WORLDWIDE PATENTS PENDING

- SLOTTED LOWER FRAME AND LIVE HINGE create a "glove-like" feeling
- SMARTLOCK[®] QUICK RELEASE BUCKLES keep strap tightness where you want it
- RADIUS ON FRAME PERIMETER RIBBING provides maximum flexibility in extreme kneeling conditions
- ADJUSTABLE STRAPS are pre-angled to allow two different strap placement options

FULL LENGTH CUSTOM FIT
MAXIMUM PROTECTION
EXTENDED ALL DAY-EVERY DAY USE
MADE TO YOUR PERSONAL SPECS

COMPACT ALL PURPOSE
FULL PROTECTION
FOR ALL THE JOBS IN BETWEEN
ONE SIZE FITS ALL

PRO FEATURES

FIND THE RIGHT KNEEPAD FOR EVERY JOB



0714/0714E ONLY FEATURES

0714/0714E/AP16 SHARED FEATURES

AP16 ONLY FEATURES

MODEL
0714E[®]
WIDE
PATENTED WORLDWIDE
5/8" SKU: 14ECFP58 1" SKU: 14ECFP1

MODEL
0714[®]
STANDARD
PATENTED WORLDWIDE

5/8" SKU: 14SCFP58 1" SKU: 14SCFP1

CUSTOM FIT

- 2 Knee Seat Widths: Standard & Wide
- 18 Lengths

ALL PARTS REPLACEABLE

- Molded in frame components make replacing parts easy, fast and economical

RUBBER BOOT

- Tough 3 ply non-skid construction
- Screws to frame
- Non-marking material (user's responsibility to keep clean)

NO WRINKLE LINER

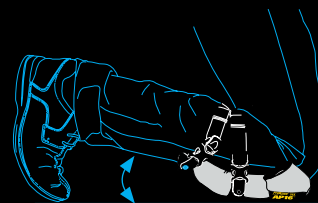
- Wicks away moisture
- No wrinkle fabrication adds comfort
- Keeps Cushion Inserts clean
- Hook 'n Loop locks liner to front & sides

CUSHION INSERT

- 2 thickness options - 5/8" and 1"
- 1 full length piece with wear liner on both sides

TOE SPRING

- Front end angles up 10½°
- Makes "walking" on knees more natural



LIVE HINGE

- Creates "Fit like a glove" feeling

QUICK RELEASE BUCKLES

- Put pads on/off in seconds

BUCKLE MOUNT

- Longer lasting design
- Screws to frame

ANTI-TWIST CUFF

- Molded in design
- Wraps around 9" of lower leg

MODULAR CURVED STRAP/BUCKLE MOUNT

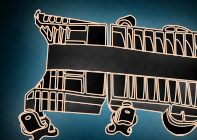
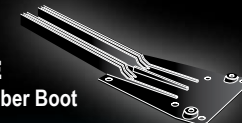
- Pre-shapes and protects Anti-Twist Cuff
- Extends life of Cushion Inserts

PATENTED FRAME COMPONENTS RIBBED THROUGHOUT

- Coupled in a way to spread heavier loads with less deflection

BOOT PLATE

- Extends life of Rubber Boot
- Shields ribbing

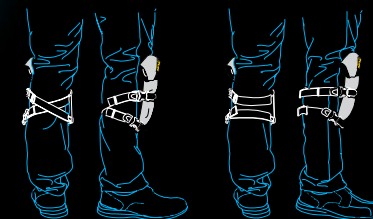


RADIUS ON FRAME PERIMETER RIBBING

- Provides maximum flexibility in extreme kneeling positions

SMARTLOCK[®]

- QUICK RELEASE BUCKLES
- Positively locks in your strap length



ADJUSTABLE STRAPS

- Pre-angled to allow two different strap placement options

KNEE POCKET SHAPE & FLAT BOTTOM DESIGN

- Stabilizes knee joint to reduce joint wear-out & knee burn pain

AP16[®]
ALL PURPOSE KNEEPADS
WORLDWIDE PATENTS PENDING

5/8" SKU: AP58 1" SKU: AP1

GET YOUR CUSTOM FIT

MEASURE IN 3 SIMPLE STEPS

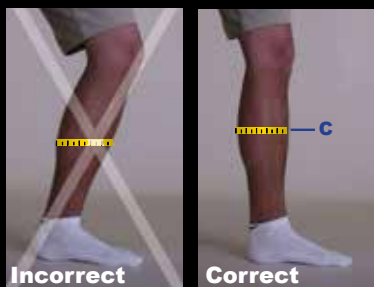
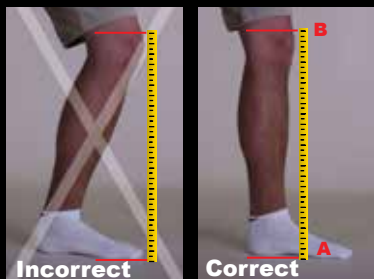
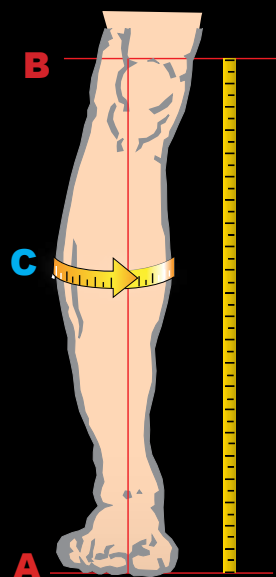
1. REMOVE SHOE.

2. MEASURE FROM FLOOR (A) TO TOP OF KNEECAP (B), WHILE STANDING.

3. MEASURE AROUND WIDEST PART OF YOUR CALF MUSCLE (C) WITH WORK PANTS ON.

*Which width you receive is determined by (C) measurement.

17.5 or larger default to Model 0714E WIDE



ProPointer → 1" VS 5/8" CUSHIONS

Over 75% of our customers prefer 1" Cushion Inserts.

We recommend 1" if the following conditions apply:

- If you are working on your knees at least 8 hours per day
- If you have had any knee problems or surgery
- If you weigh more than 200 lbs
- If you prefer the maximum protection that ProKnee has to offer



ProPointer → FIT

Knee should fit snug in cradle of knee cup while thigh should align flush with front edge of cushion +/- 1/4"



ENSURING PROPER FIT IS CRUCIAL TO DELIVERING OPTIMAL COMFORT AND PERFORMANCE

REBUILDS AND REPLACEMENT PARTS

1 DO A COMPLETE REBUILD OF YOUR KNEEPADS 2 WAYS TO RENEW 2 BUY ONLY THE PARTS YOU NEED!

- Purchase a Complete Rebuild Kit and rebuild them yourself OR**
- Send them into the factory and we'll do the work for you – at no additional charge! ***

*MUST have a RETURN AUTHORIZATION # BEFORE sending kneepads to the factory. See your local distributor or call 1-800-549-5018 for yours!

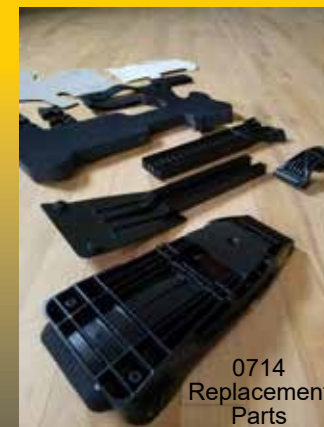
*If purchased before 2/1/07, kneepads sent to factory will be rebuilt using Model 07 specs. All other models will be rebuilt to the same model specs as when they arrive at the factory.

*Rebuilds can only be completed if the kneepad frames are intact - no cracks, breaks etc. Customer is responsible for ALL shipping and handling costs.



Shown Bottom
used and abused:
3 year old Model 0714
Shown Above like new:
Same pair with 0714
Complete Rebuild Kit

We offer a variety of individual parts and parts kits options to suit your every need. Upgrade what you want; when you want. Replacement parts make your old pads look and feel just like new!



AB Size Chart Original & Model 07 Only

3 in = AB 17.5
3½ in = AB 18
4 in = AB 18.5
4½ in = AB 19
5 in = AB 19.5
5½ in = AB 20
6 in = AB 20.5
6½ in = AB 21
7 in = AB 21.5
7½ in = AB 22
8 in = AB 22.5
8½ in = AB 23
9 in = AB 23.5
9½ in = AB 24
10 in = AB 24.5
10½ in = AB 25
11 in = AB 25.5

Original Model & Model 07



STEP 1. Place kneepad as shown and refer to area indicated by red box.



STEP 2. Engraving indicates your AB size. If no engraving, go to Step 3.



STEP 3. Measure distance from bottom edge of white boot to arc of frame as indicated above. Match your measurement to size chart at left.

Model 0714 & 0714E



STEP 1. Place kneepad as shown and push cushion to right to expose numbers as indicated by red box.



STEP 2. The number that lines up with "AB" is the size of your kneepad.

REPLACEMENT PARTS OPTIONS

**INDICATES
SKU CODE
FOR ORDER
EFFICIENCY**

ORIGINAL

****SNAP ON BOOTS AND LINERS****

MODEL SOLD FROM
1989 to 2007



**MODEL™
07**

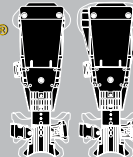
MODEL SOLD FROM
2007 to 2014



**MODEL
0714®
STANDARD**

**MODEL
0714E®
WIDE**

MODELS SOLD FROM
2014 to Present



**AP16®
ALL PURPOSE KNEEPADS**

MODEL SOLD FROM
2016 to Present



**COMPLETE
REBUILD
KIT**

5/8" only



CR-OR

5/8"



07CR58

1"



07CR1

Standard
Wide

5/8"



**14SCR58
14ECR58**

1"



**14SCR1
14ECR1**

5/8"



APCR58

1"



APCR1

**REPLACEMENT
PARTS
KIT**

1 pair



RPK

1 pair



07PK1

2 pair



07PK2

6 pair



07PK3

Standard
Wide

1 pair



**14SPK1
14EPK1**

2 pair



**14SPK2
14EPK2**

6 pair



**14SPK3
14EPK3**

5/8"
1"



**AP PK1-58
AP PK1-01**

2 pair



**AP PK2-58
AP PK2-01**

6 pair



**AP PK3-58
AP PK3-01**

**1 PAIR
RUBBER
BOOTS**



WRB



07RB



14RB



APRB

**1 PAIR
LINERS**



TPL

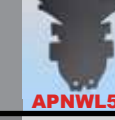


07NWL

Standard
Wide



**14SNWL
14ENWL**



APNWL58



APNWL1

**CUSHION
INSERTS**



KNF



SPF



07FI58



07FI1

Standard
Wide



**14SF158
14EF158**



**14SF11
14EF11**



APFI58



APFI1

**QUICK
RELEASE
BUCKLES**



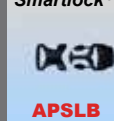
QRB



07QRB

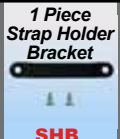


14QRB



APSLB

EXTRAS



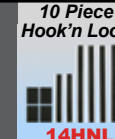
SHB



07SHB



14SBM



14HNL



APST

**STRAPS FIT
ALL CUSTOM
FIT PROKNEE
MODELS**

12"
Extra
Short
Strap
1 Piece



ST-XSST

15"
Short
Strap
1 Piece



ST-SST

17"
Special
Order
Long
Strap
1 Piece



ST-SOLST

19"
Long
Strap
1 Piece



ST-LST

24"
Extra
Long
Strap
1 Piece



ST-XLST

27"
Special
Order
Extra
Long
Strap
1 Piece



ST-SOXLST

PROTHOUGHTTM PRODUCTS

GoofProof[®] WALL TRIMMER

SKU: GPWT



BEGINNER TO
PROFESSIONAL
CUTS IN UNDER
60 SECONDS!

The most accurate & easiest method of trimming direct
glue-down & inflexible carpets perfect the first time

NEW PATENT PENDING FEATURES INCLUDE:

- Super strong molded plastic frame components
- Threaded steel inserts & hardware
- Automatic blade depth adjustment stop

PLUS:

- Trim soft sheet goods, cove base toe & carpet easily in one pass
- Uses standard slotted blades
- Use with right or left hand

SET-UP IS AS SIMPLE AS 1 • 2 • 3



Step 1 Loosen Blade Hold-Down screw 1/4 turn.



Step 2 Insert screwdriver into slot, pushing blade until screwdriver automatically stops. Then tighten Blade Hold-Down screw.



Step 3 Loosen screw and move Heel Adjuster down until blade contacts surface. Then tighten screw.

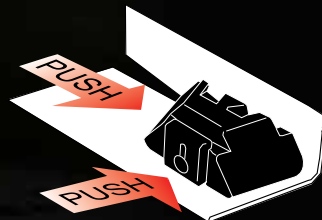


Illustration above shows left hand cutting position.
Photo at left shows right hand cutting position.



SKU: OSCC

Over ShoulderTM Carry Case

ProKnee[®] SWEATSHIRT

AVAILABLE IN SIZES M-3XL

SKU: PROSS



ProPouchTM



SKU: PRPH

4" tool pouch with cut
proof construction



Trade T'sTM

AVAILABLE IN SIZES L-2XL

Shown Top Left to Right: Hard•Softgoods Pro,
Ceramic•Stone Pro, ProKnee Safety Orange,
ProKnee Black, ProKnee Safety Green, Wood Flooring
Pro, Flooring Pro [Not Shown: Carpet Pro]

Shown Right/Back View:

Mr. ProKnee & Sidekick AP Illustration

SKU: PRO-W

Want a tool that cuts installation time in half, while side stepping pattern scribing or using tricky technical techniques?

TREADMAN®

US Pat # 8561311B1

MULTI - ANGLE STAIR TREAD CUTTING SYSTEM

- QUICK, ACCURATE MEASUREMENTS
- USE AS A CUTTING GUIDE WHILE TRANSFERRING STAIR GEOMETRY TO RUBBER TREADS
- ADDITIONALLY USE TO MARK OUT HARDWOODS, TILE, CERAMICS, AND ANY OTHER HARD SURFACE MATERIAL
- PORTABLE AND LIGHTWEIGHT AT 6.5 LBS
- DEPTH ADJUSTMENT FROM 10" TO 13-1/4"
- ADDITIONAL EXTENSION KITS AVAILABLE FOR EXPANDED WIDTHS FROM 22-1/2" TO 9'-1/2"

- ADDITIONAL BLADE FRIENDLY SELF STORAGE BOX DOUBLES AS EXPANDED HEAVY DUTY CUTTING SURFACE
- ERGONOMIC KNOB LAYOUT FOR EASE OF USE
- ALL WALLPLATES ADJUST TO ALL WALL ANGLES
- 1/16" STEEL PLATES FOR MAXIMUM ACCURACY

DOES 1 PIECE
STEP/RISER
TREADS IN
MINUTES

SHOWN:
STANDARD TREADMAN
ADJ. FROM 35 1/4" TO 61 1/2"
SKU: TRDM

ProPointer → HOW'S IT WORK?

By securely locking in each step/tread's specific geometry, Treadman acts as your template and cutting guide for quick, accurate and perfectly cut stair treads every-step-of-the-way!

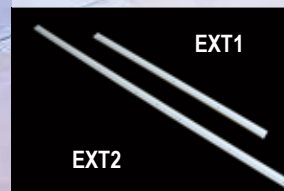
THE COMPLETE LINEUP
SKU: TRDM-LINEUP
(COMPLETE LINEUP INCLUDES
TRDM, TRDM-STEPKIT, TRDMBO,
TRDM-EXT1, TRDM-EXT2,
TRDM-EXT3)



1 PC STEP/RISER
TEMPLATE KIT
SKU: TRDM-STEPKIT



EXTENSION KIT 1
ADJ. FROM 4' 8 3/4" TO 6' 11"
SKU: TRDM-EXT1



EXTENSION KIT 2
ADJ. FROM 6' 10 3/4" TO 9' 1/2"
SKU: TRDM-EXT2

STANDARD TREADMAN
WITH
TOOL BOX/
CUTTING BLOCK
SKU: TRDMB1



TOOL BOX/
CUTTING BLOCK
SKU: TRDMBO



EXTENSION KIT 3
ADJ. FROM 22 1/2" TO 36"
SKU: TRDM-EXT3



FREQUENTLY ASKED QUESTIONS

Q. What applications can ProKnee Kneepads be used for?

A. Our kneepads can be used when working with carpet, hardgoods, softgoods, VCT, ceramics, hardwood, laminates, epoxy, concrete finishing, carpentry, roofing (with approved safety tie off devices), HVAC, automotive, airline, ironwork and more...

Q. How long will it take for me to get used to wearing ProKnee Kneepads?

A. It varies from 1 day to 1 week, depending on usage and application.

Q. When installing carpet, can I still use ProKnee Kneepads when kicking my knee kicker?

A. Approximately half of our carpet installer customers use them with a knee kicker.

Q. How long will ProKnee Kneepads last?

A. This depends on the application they are being used for, and the care and maintenance performed by the user. Replacement parts are available and recommended to extend the life of the kneepads.

Q. How do I measure to ensure a correct fit for the custom fit ProKnee Kneepads?

A. Use the ProMeasure available at participating distributors (or a tape measure if not available) to take the measurements that are required for a proper fit – “AB” and “C” measurements.

1. The “AB” measurement is taken from the floor to the top of the kneecap, standing straight with shoes removed. (PLEASE do not subtract an inch or two to adjust for the shoe or boot – this will not give an accurate size).
2. The “C” measurement is taken around your leg at the widest part of the calf muscle. This will tell us both the correct strap lengths for the kneepad and whether you need the Standard or Wide model of kneepads.

Q. I thought I measured properly, but I'm not sure my kneepads fit correctly. How can I tell?

A. Using the ProMeasure or following ProKnee measuring guidelines will work for the majority of our customers. However, if someone has a high instep or tall boots, it can throw off the size. **Please verify that you have the correct size kneepads BEFORE you wear them to avoid a restocking fee.** If you have the correct size, the kneepads will sit on the top of your shoe/boot and will be +/- 1/4" from top of kneecap.

Q. Can I exchange kneepads that are the wrong size or width?

A. Yes, ProKnee allows size/width changes for kneepads within 30 days of purchasing. To exchange a size or width, call us at 1-800-549-5018 for a Return Authorization #. There will be a 30% restocking fee for exchanged used/worn kneepads, so be sure to try them on before putting them to work.

Q. I ordered parts, but think I may have ordered the wrong ones.

They don't fit my kneepads. Can I exchange them for the correct parts?

A. Yes, parts can be exchanged within 30 days of purchasing, if new and unused. See above on completing an exchange.

Q: Are parts interchangeable between all kneepad models?

A. No. All ProKnee Kneepad models have different fitting parts. When ordering replacement parts, you will need to know which model kneepads you have so you can order the correct fitting parts.

Q. What kind of warranty does ProKnee offer on their kneepads?

A. We warranty the plastic frames and buckles against breakage, Cushion Inserts against losing their compression set (if cushions feel flat), and separation of cushions from the frame (slight tearing of cushion where attached to the frame is considered normal and excluded from warranty).

WARRANTY IS VALID FOR ONE YEAR FROM DATE OF PURCHASE - Keep your receipt!

If you have a warranty issue, contact us at 1-800-549-5018 to receive a Return Authorization #. You will need to send the kneepads into our Repair Department for evaluation. We will either fix or replace any parts that are covered under the warranty.

Q: Are the Original Model and/or Model 07 Kneepads still available for purchase?

A. No. ProKnee is no longer manufacturing our Original Model or Model 07 Kneepads. However, all parts are still available to purchase for both models, individually or in various kits. Also, our Repair Department will continue to rebuild Model 07 kneepads and rebuild Original Model to Model 07 specifications.

Q. Can Original Model or Model 07 Kneepads be upgraded or rebuilt to the new Model 0714 or Model 0714E specs?

A. No. Unfortunately, the frame components are different on the Model 0714/0714E Kneepads and cannot be changed over from the Model 07 or Original Model.

Q: Can ProKnee Kneepads be rebuilt?

A. Yes. As long as the frame is in good condition (no breaks or cracks), ALL models of kneepads can be rebuilt either at the factory or by purchasing a Complete Rebuild Kit. Be aware that all models have different fitting parts, so if ordering the kits, make sure you know which model kneepads you need to rebuild and refer to the model when ordering.

Please Note: Original Model Kneepads sent to the factory will be converted to Model 07 specs. The factory DOES NOT rebuild with Original Model parts. If you do not want your kneepads converted, you must order an Original Complete Rebuild Kit and rebuild your kneepads yourself.

Q. If I send in my kneepads for a Factory Rebuild, how long will it take?

A. We know it is hard to be without your kneepads, so we try to have a quick turnaround time. Once we receive them in our Repair Department, it usually takes 2-4 business days to rebuild and ship out. Keep in mind, the time shipping them to us and us shipping them back to you can be anywhere from 2-10 business days depending upon where you are in the US or Canada. (Example – Shipping via UPS - Virginia is 2-3 business days and California is 5-6 business days – each way).

DISTRIBUTED BY:

ProKnee[®] SINCE 1989
MADE IN USA

KNEE PROTECTION FOR THE PROS

ProKnee[®] **PRO KNEE**[®]
MODEL **0714**[®] MODEL **0714E**[®] **AP16**[®]
TREASMAN[®] **SMARTLOCK**[®]
GoofProof[®]

are Registered Trademarks of PROKNEE® CORP.

MODEL **07 ProMeasure**[™] **OverShoulder**[™]
Trade T's[™] **ProPouch**[™] **ProThought**[™]
are Trademarks of PROKNEE® CORP.

U.S. Patent Numbers 4772071, 4876745, 7937769, 10441007, 8561311 B1
Other Patents Pending, CANADA Patent Number 2617789

©ProKnee October 2019 All Rights Reserved