



OWNER'S MANUAL



FABRICATOR SMART CHOICE

**ADJUSTABLE HEIGHT
WORK TABLE**

AHWT910



DECEMBER, 2023



PRODUCT FEATURES

Versatile dual-function fabrication table ideal when cutting, grinding, or polishing an already cut-to-size piece. Serves as a work table in the horizontal position and as a slab dolly in the vertical position. The tabletop is adjustable for different sloping positions and height adjustable to suit the specific physical needs of the person to maintain optimum ergonomic positioning. With four adjustable leveling posts for stability and removable center braces for convenience when working with sinkhole cut-outs.

- Three removable center braces for convenience when working with sinkhole cut-outs
- Four leveling posts for added stability.
- Solid rubber tires with locking brakes protect floor surfaces and increase ease of motion.
- Tabletop lined with wood to minimize damage to workpieces.



SPECIFICATIONS

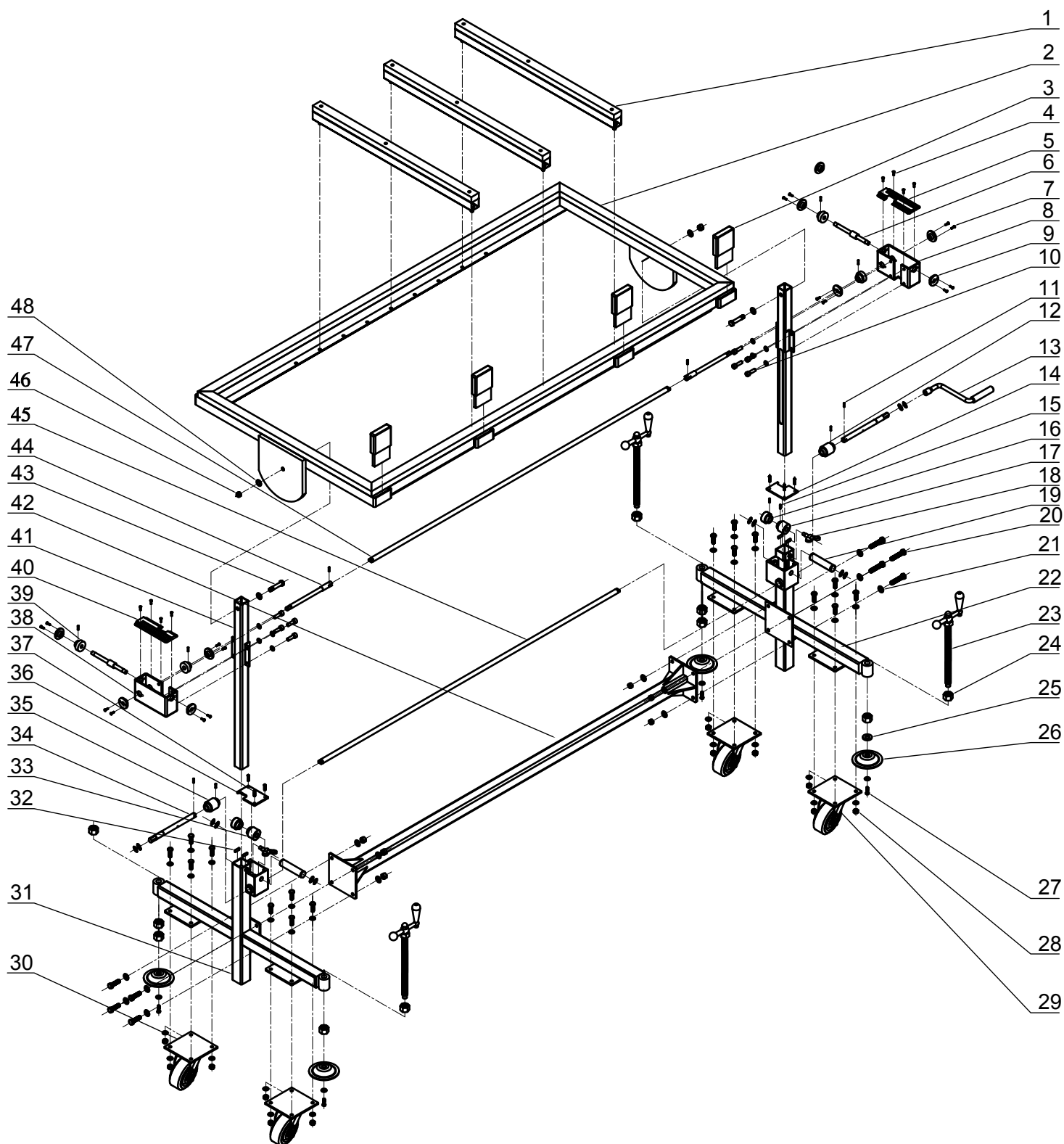
AHWT910	METRIC	IMPERIAL
Surface table sizes	1906 x 915 mm	75 x 36 in
Table height adjustable range	950 mm	37.4 in
Working load limit	500 kg	1102 lb
Net weight	123.8 kg	273 lb
Gross weight	124 kg	273.4 lb
Packaging dimensions	1960 x 960 x 300 mm	77.2 x 37.8 x 11.8 in



ASSEMBLE FOR PRODUCT:

The Adjustable Height Work Table comprises five principal components: the cross-bar, the right and left posts, the rotating connection bar, the tilting connection bar, and the table surface. This design ensures straightforward and swift assembly. Please proceed with the following three steps to assemble the product:

- **Step 1:** Attach the cross-bar securely to the right and left posts.
- **Step 2:** Attach both the rotating and tilting connection bars to the corresponding right and left posts.
- **Step 3:** Mount the table surface onto the right and left posts to complete the assembly of the product.





PARTS LIST

POS.	CODE	DESCRIPTION	Q'TY
1	AHWT910 - 001	Brace Bar	03
2	AHWT910 - 002	Table	01
3	AHWT910 - 003	Back-Up Head	04
4	AHWT910 - 004	Tapping Screw M4x15	08
5	AHWT910 - 005	Right Tilt Gearbox Cover	01
6	AHWT910 - 006	Worm Gear	02
7	AHWT910 - 007	Hex. Socket Countersunk Head Screw M4x15	16
8	AHWT910 - 008	Right Tilt Gear Box	01
9	AHWT910 - 009	Brass Bush	08
10	AHWT910 - 010	Hex. Socket Head Cap Screw M10x20	08
11	AHWT910 - 011	Grooved Pin	04
12	AHWT910 - 012	Right Worm	01
13	AHWT910 - 013	Adjustable Crank	01
14	AHWT910 - 014	Right Gearbox Cover	01
15	AHWT910 - 015	Hex. Socket Set Screw M6	06
16	AHWT910 - 016	Gear	02
17	AHWT910 - 017	Right Worm Gear	01
18	AHWT910 - 018	Wing Bolt M8	02
19	AHWT910 - 019	Shaft	02
20	AHWT910 - 020	Hex. Bolt M10x30	24
21	AHWT910 - 021	Washer Ø10	48
22	AHWT910 - 022	Right Post	01
23	AHWT910 - 023	Leveling Post	04
24	AHWT910 - 024	Hex. Nut M20	08
25	AHWT910 - 025	Washer Ø18	04
26	AHWT910 - 026	Adjustable Padded Foot	04
27	AHWT910 - 027	Hex. Bolt M10x20	04
28	AHWT910 - 028	Hex. Nut M10	24
29	AHWT910 - 029	Swivel Castor	02
30	AHWT910 - 030	Swivel Castor (Locking Type)	02
31	AHWT910 - 031	Left Post	01



PARTS LIST

POS.	CODE	DESCRIPTION	Q'TY
32	AHWT910 - 032	Adjustable Gib	04
33	AHWT910 - 033	Left Gear	01
34	AHWT910 - 034	Rotation Axis	02
35	AHWT910 - 035	Left Worm Gear	01
36	AHWT910 - 036	Left Gearbox Cover	01
37	AHWT910 - 037	Tapping Screw	06
38	AHWT910 - 038	Left Tilt Gear Box	01
39	AHWT910 - 039	Hypoid Gear	04
40	AHWT910 - 040	Left Tilt Gearbox Cover	01
41	AHWT910 - 041	Slide Bar	02
42	AHWT910 - 042	Cross Bar	01
43	AHWT910 - 043	Hex. Bolt M12x80	02
44	AHWT910 - 044	Tilt Axis	02
45	AHWT910 - 045	Rotate Connection Bar	01
46	AHWT910 - 046	Washer Ø12	04
47	AHWT910 - 047	Tilt Connection Bar	01
48	AHWT910 - 048	Hex. Nut M12	02



GENERAL SAFETY OPERATIONS

- Carefully consider all safety regulations, standards, and codes in your country for operating cart.
- Ensure that each employee reads and understands this manual before using this cart.
- Please always be cautious and alert when using this device for your and your fellow installer's safety. Be mindful that people are getting injured by handling heavy pieces of stone mostly due to lack of knowledge, carelessness, and not being focused on the task.
- Inspect the Adjustable Height Work Table. If the cart is worn or damaged, do not use it.
- Straps off - Hands-on. When the table is horizontal, without any straps holding the stone down on the cart, the stone could slide in any direction on the transfer bearings. Therefore, ensure someone has a hand on the stone when the straps are removed.
- Ensure brakes are on when the cart is not in motion.
- Do not exceed the manufacturer's capacity.
- Wear safety equipment, like a helmet, gloves, and safety boots.



INSTRUCTIONS FOR USE

A versatile dual-function fabrication table is ideal when cutting, grinding, or polishing an already cut-to-size piece. Rubber tires with locking brakes protect floor surfaces and increase ease of motion four leveling posts for added stability serve as a work table in the horizontal position and as a slab dolly in the vertical position. The tabletop is adjustable for different sloping positions with four adjustable leveling posts for stability and removable center braces for convenience when working with sinkhole cut-outs. The tabletop is lined with wood to protect work pieces.

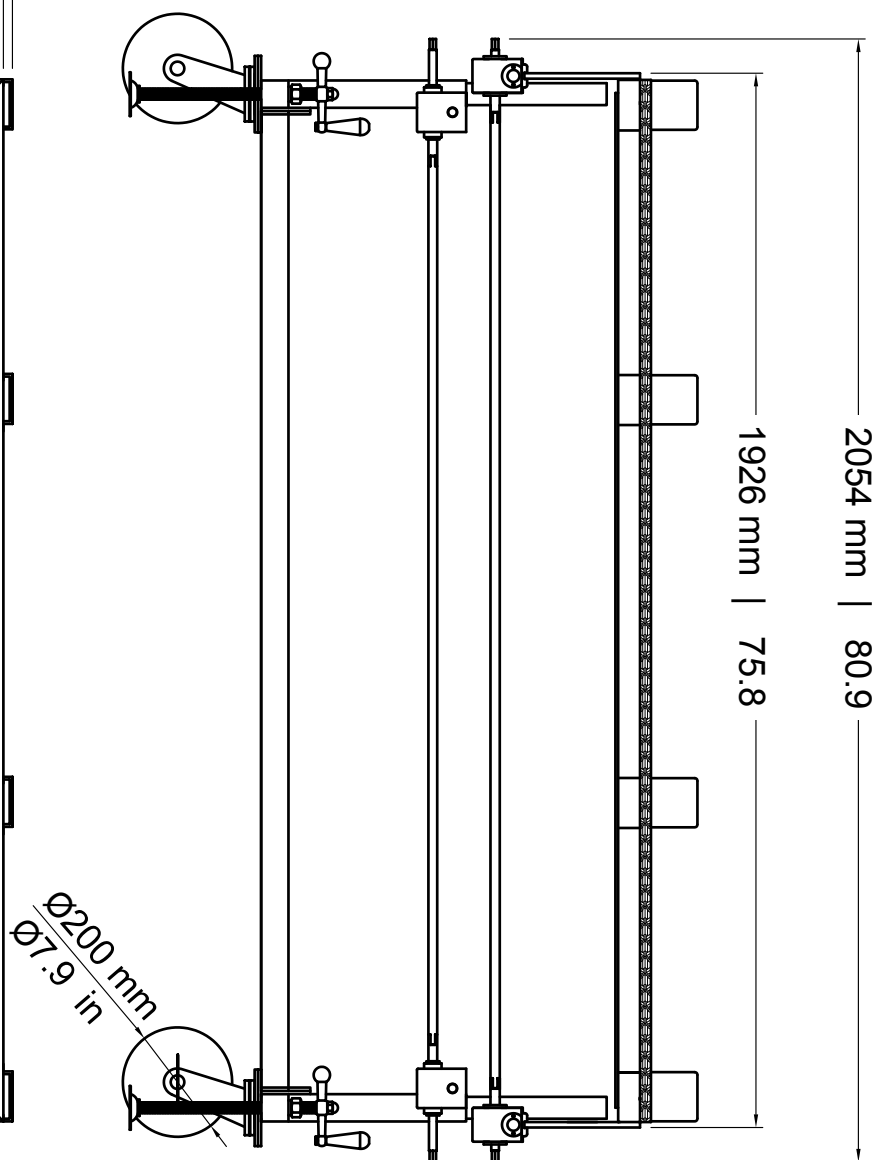
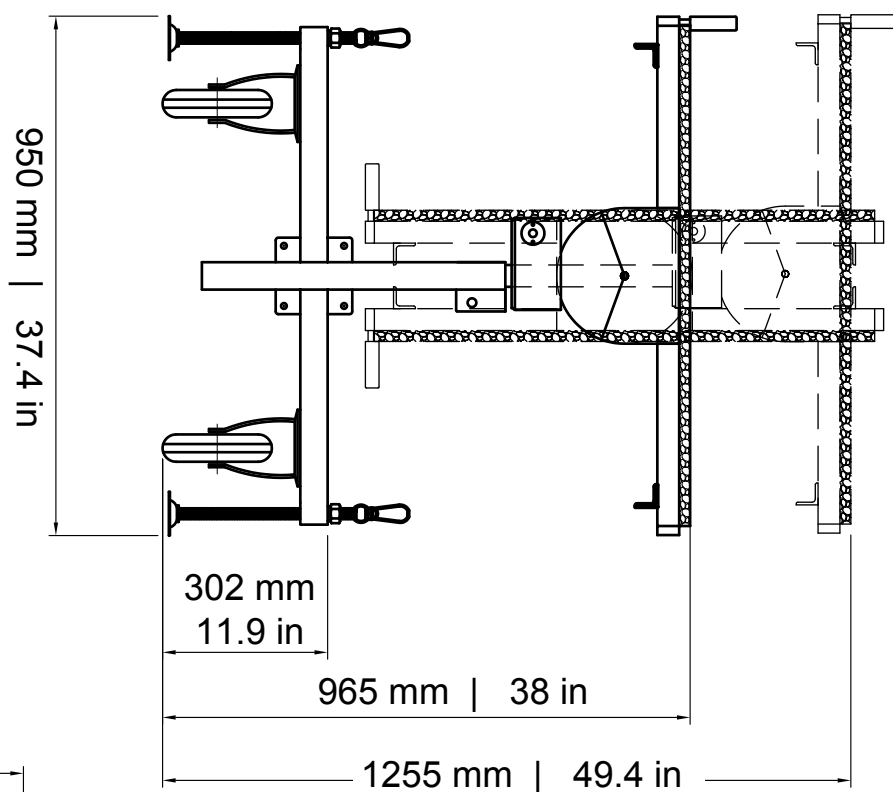
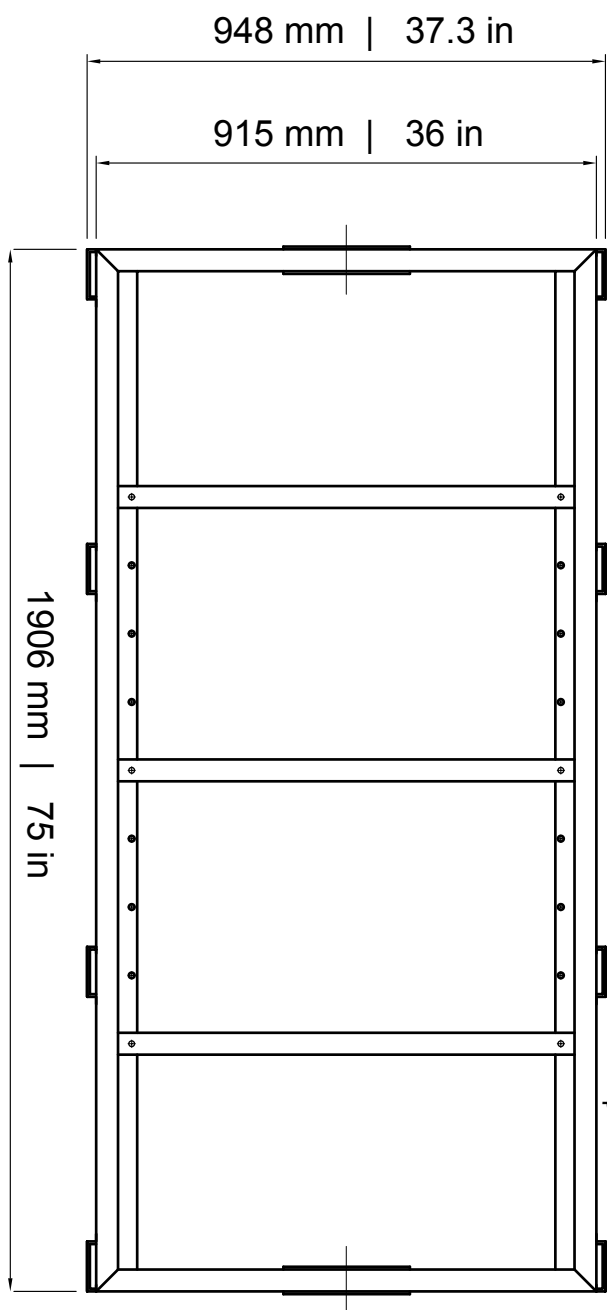
- **Step 1:** Transport the table to the desired location using the rubber tires and ensure the Adjustable Height Work Table is positioned on a stable and level surface. Engage the locking brakes on the tires to secure the table in place during use. Remember to disengage the brakes when you wish to relocate the table.
- **Step 2:** Manually adjust the Leveling Posts on both the right and left posts to secure the Adjustable Height Work Table firmly.
- **Step 3:** Use your hand to rotate clockwise or counterclockwise to adjust the Adjustable Height Work Table to the appropriate height for easy operation by rotating the Adjustable Crank.

Note: The user can adjust the exact angle tilts through an inclinometer.

- **Step 4:** Carefully place the stone slabs onto the worktable surface, avoiding any strong impacts that could damage the slabs.
- **Step 5:** If the processing requires that the stone slab be angled, turn the crank in either direction to adjust the tilt connection bar of the Adjustable Height Work Table as needed.
- **Step 6:** For smaller stone slabs, reposition the brace bars on the Work Table to maintain the slab's stability on the surface.
- **Step 7:** Carefully check if the Adjustable Height Work Table is stable and balanced after adjusting the height & tilt angle. If necessary, make further adjustments to ensure the Work Table is stable during processing.



DIMENSIONS





INSPECTIONS AND MAINTENANCE

- Before each use, check for damaged or missing components. Replace broken or missing pieces immediately with Aardwolf replacement parts.
- Check all fasteners and tighten or replace loose or missing hardware.
- Check welds and material near welds for cracking or damage.
- Grease jacks, wheels, and brakes regularly.
- Lubricate transfer roller bearings. Wipe down any excessive oil.
- Keep this product clean.
- Store the work table indoors for longevity.



WARRANTY

During delivery, it is necessary to check that the Adjustable Height Work Table has not been damaged during shipment. Any claims must be presented within eight days of the product's delivery date. We grant you one one-year warranty on the Aardwolf Adjustable Height Work Table countered from the date of purchase.

The warranty coverage is not applicable if:

- The Adjustable Height Work Table is mishandled during maneuvering.
- The operator fails to comply with the instructions in this booklet.
- The product's maximum permissible capacity is exceeded.
- The specifications for the work table are not followed.
- Damages are due to inadequate maintenance and inspections.
- Damage is due to improper storage.
- The user performed repairs without our permission.
- The user uses non-original spare parts from the Aardwolf brand.



AUSTRALIA

1/5 Stanton Road, Seven Hills NSW 2147

Tel: 02 9838 8427

Web: www.aardwolfaustralia.com **Email:** enquiries@aardwolfaustralia.com

BULGARIA

Str. Usta Kolio Ficheto 33

Tel: +359 887 933 754

Email: adrian@toolrange.com

INDIA

Harmara Road, Industrial Area, Madanganj, Kishangarh, District- Ajmer, Rajasthan India 305801

Tel: +91 73000 68444

Web: www.aardwolf.co.in

Email: sales@aardwolf.co.in

GERMANY

Schulze-Delitzsch-Weg 2, 33175 Bad Lippspringe

Tel: +49 5252 838 2830

Email: sales@aardwolf.com.de

USA

9401 Norwalk Blvd, Santa Fe Springs, CA 90670

Tel: (562) 553-6050

Web: www.aardwolfusa.com

Email: sales@aardwolfusa.com

VIETNAM

1B, An Phu, Thuan An City, Binh Duong Province, Vietnam

Tel: +84 931 707 793

Web: www.aardwolf.com.au

Email: contact@aardwolf.com.au



AARDWOLF PRODUCT VIDEO

www.youtube.com/user/AardwolfGroup

