

New at Lackmond!

BEAST / B+BTEC RAIL SAWS

BLADE SIZE: 10"
 MOTOR CAPACITY: 2 hp
 RPM: 3,360
 DEPTH OF CUT AT 90°: 2"
 BEVEL: 45°
 WARRANTY: 2 Year

STAINLESS STEEL CONSTRUCTION



- Powerful HiPower direct drive motor
- Stainless Steel for durability and ease of maintenance
- Redesigned stainless steel blade guard
- Miter and plunge cutting capability
- Precision rail and bearing system provides extremely smooth operation
- Wheels for easy loading and unloading



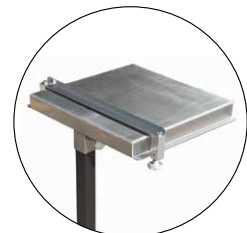
OPTIONAL ACCESSORIES

SIDE TABLE WITH SQUARING ARM
 (16"x16")

ITEM
 BRSST

GFCI CABLE
 (Replacement)

ITEM
 BRSGFCI



| ITEM | DIAMETER | ARBOR | RIP CUT | DIAGONAL | WEIGHT |
|-----------|----------|-------|---------|----------|---------|
| BEASTRS34 | 10" | 5/8" | 34" | 25" | 115 lbs |
| BEASTRS48 | 10" | 5/8" | 48" | 33" | 137 lbs |
| BEASTRS59 | 10" | 5/8" | 59" | 41" | 154 lbs |

Call your Lackmond Products sales representative TODAY
 for more information on this product and more!