



IMPORTANT MIXING INSTRUCTIONS

AGGREGATE BIGGER THAN 3/8" WILL DAMAGE MIXER

SAND
LIME
CEMENT

- Set up mixer
Start mixer
Do not add water
1. Add 1/2 sand
2. Add lime
3. Add cement
4. Mix materials dry
5. Add 3/4 of water
6. Add rest of sand
7. Add rest of water
8. Mix up thoroughly

PRE - MIX 60 lb
SPEC - MIX 80 lb

- Set up mixer
Start mixer
Do not add water
1. Check bag weight
2. Determine max load
3. Add 1/2 of max load
4. Add 3/4 of water
5. Add rest of bags
6. Mix up thoroughly

SILO

- Set up mixer
Start mixer
Do not add water
1. Add 1/2 of max load
2. Add 3/4 of water
3. Add rest of material
4. Add rest of water
5. Mix up thoroughly

MIXER DRUM
CAPACITY : 250 lbs* 120
CAPACITY : 400 lbs* 240
CAPACITY : 800 lbs* 480

* WEIGHT IS COMBINED SAND, LIME, AND CEMENT MIXTURE

FOR MORE INFORMATION CHECK THE MACHINE MANUAL



Contents

**IMER U.S.A., INC.
INSTRUCTION MANUAL
READYMAN® 120
PORTABLE MORTAR MIXER**

NOTE:Please read this manual before beginning to assemble or operate this piece of equipment.

ASSEMBLY	4
IMPORTANT NOTES AND ADVICE	5
OPERATING INSTRUCTIONS	7
MAINTENANCE.....	8
TECHNICAL SPECIFICATIONS.....	8
WIRING DIAGRAM	9
SPARE PARTS LIST	10



Assembly

1. Lift the cardboard box off the machine, next lift the machine off the shipping pallet.
2. Lift the drum safety grate and take out the pieces with which to finish the assembly
3. Slide the two wheels over their corresponding axle struts (Ref.04 Drawing 03), and lock them in place by using the provided spring pins (Ref.05 Drawing 03).
4. Then slide the axle struts into the mixer frame (Ref.02 Drawing 03), lock them into the desired position by using the provided anchor pins (Ref.06 Drawing 03).
5. Next slide the T-Bar (Ref.03 Drawing 03) into the mixer frame and lock it into the desired position by using the provided anchor pin (Ref.06 Drawing 03).

***NOTE - It is very important that
the axle struts and the T-Bar be
positioned at the same height....if
they are at different heights the
mixer will not operate correctly
and may fall over!***

6. Then check once again to make certain there are no tools or parts remaining inside the drum.....with the drum area clear, plug in the mixer and push the start button located on the motor.
7. The mixer should operate very smoothly and quietly, with the paddles spinning inclockwise rotation. If this is not the case, contact your local IMER DISTRIBUTOR or call IMER U.S.A. direct at (800) 275-5463.



Important Notes and Advice

Do's and Don'ts on the Safe Use of the Readyman® 120

In the interest of safety, whoever uses the Readyman® 120 mixer should first read this manual and become familiar with all of the important safety notes. Failure to follow this advice may result in injury to yourself and others.

WHAT TO DO !

- Carefully read and understand these instructions before operating the mixer.
- Always unplug the mixer from its power source before cleaning or maintaining the mixer.
- Make sure the safety guards are always in place.
- When using the machine always wear safety boots with reinforced toe-caps, safety glasses, gloves, hard hat, and clothing with the appropriate fit.
- Practice starting and stopping the machine.
- Use the appropriate power cord (14 gauge) and make sure it is properly grounded.
- Keep the mixer clean and free of debris build-up.
- Periodically inspect your mixer for abnormal wear or damage.

Important Notes and Advice **What NOT TO DO !**

DO NOT

place your hands or any other object inside the mixer drum while it is running.

DO NOT

use the safety grate interlock switch for stopping the mixer..... use the on/off switch located on the side of the mixing drum.....*this safety interlock system is designed to provide some protection for negligent operators.....* **REMEMBER**, never remove the safety grate while the mixer is running, unplug the mixer from its power source, then the grate may be raised properly place any tools or other objects in or around the mixer drum while it is running.

DO NOT

operate the mixer on a surface that is UNEVEN.... if the Readyman® is placed on an incline, it can fall over or roll away!

DO NOT

clean, assemble or work on the mixer while it is plugged in !

DO NOT

operated the mixer in or around water puddles !

DO NOT

allow water to contact the motor or electrical components at any time!

DO NOT

leave the mixer unattended !

DO NOT

allow other persons around the mixer while it is operating.

DO NOT

Operate the mixer while using drugs or alcohol

DO NOT

operate the Readyman® 120 if you are uncertain as to how to run the machine.... Contact your local IMER DISTRIBUTOR or call IMER U.S.A. at (800) 275-5463.

***WE WANT SAFE AND EFFICIENT
PRODUCTION/OPERATION
FOR ALL OUR CUSTOMERS !***



Operating Instructions

1. Use a 3 prong, grounded, 115 Volt power connection for safe operation. The line should be at least 14 gauge.
2. Adjust the mixer legs to the height which best suits the discharge container.
- For Example :
 - Wheelbarrow
 - Mud Bucket
 - Mud Pan
3. Before adding material make certain the discharge gate is in the closed position.
4. Start the mixer by pushing the **ON/OFF** switch located on the electric motor.
5. Fill the mixer to the top of the inner most paddle...**DO NOT OVER FILL !** The Readyman® holds approximately 25 shovels of material, or 5 qty. five gallon buckets of material.
6. Now add water until the desired consistency is achieved.
7. Position the appropriate container beneath the discharge chute area... then slide the discharge gate open.

NOTE: DO NOT turn off the motor while discharging ... the paddle system is designed to make the material discharge while it is turning.

8. If the mixer is stopped while material is still in the drum, do not allow the material to harden up. It is possible to re-start the mixer with up to 3/4 of a load in the drum. If the drum was at full capacity when the mixer stopped, discharge 1 qty. 5 gallon bucket, then re-start the mixer.

NOTE: Always unplug the mixer from its power source before up the saefety grate....Be smart,Be safe.



MAINTENANCE

The Readyman® is designed to require very low maintenance, however, a few basic maintenance procedures should be followed :

1. Keep the drum and the discharge gate area free of mud build up.

REMEMBER - Always unplug the Readyman® before performing any maintenance procedures.

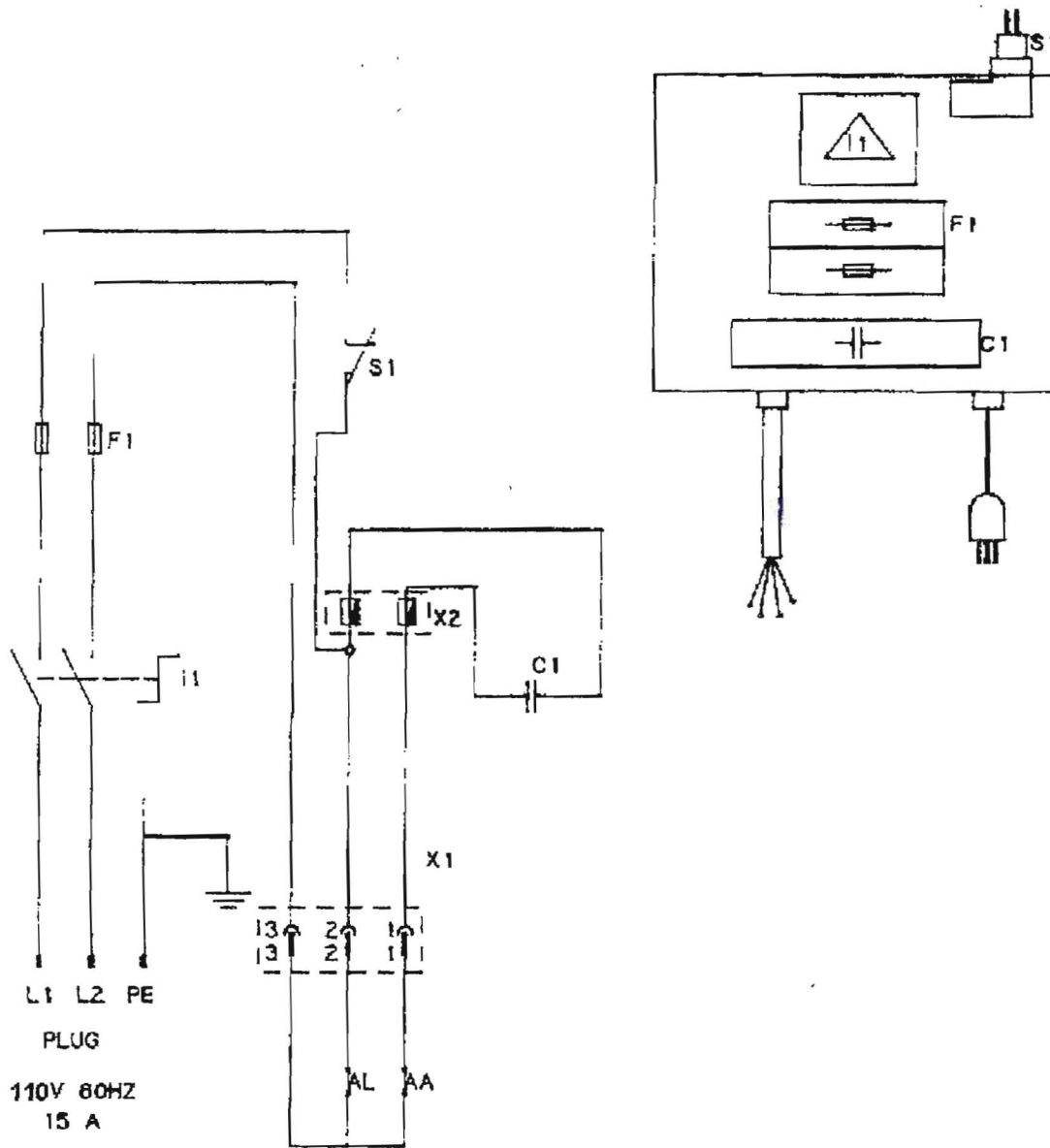
2. Change the gearbox oil approximately every 1.500 hours of operation.
3. Keep all the moving parts lightly lubricated on a weekly basis. WD-40 works well for this application.
4. Keep the electrical motor cooling fins clean and free of debris build-up.

Technical Specifications **Readyman® 120**

Drum capacity	4.5 CU. FT.
Batch Output	2.2 CU. FT. (25 shovels/5 qty. 5 gallon buckets)
Drum Diameter	27 Inches
Discharge Outlet Height	23 Inches
Semi - Pneumatic Wheels	12"x2.5"
Single Phase Electric Motor 110V/60Hz	0.8 Horsepower
Overall Operating Dimensions	37"x38"x48"
Overall Storage Dimensions	34"x32"x40"
Weight	212 Pounds



WIRING DIAGRAM



- L1= LINE
- L2= LINE
- PE= GROUND
- I1= MAIN SWITCH
- F1= FUSES HOLDER 10, 3x38 WITH
 FUSES 20A 10, 3x38
- AL= MOTOR WORKING WINDING
- AA= MOTOR STARTING WINDING
- S1= LIMIT SWITCH
- C1= CONDENSOR
- X1= CONNECTOR
- X2= CONDENSOR CLAMPS



SPARE PARTS

SYMBOL

Interchangeability (example):

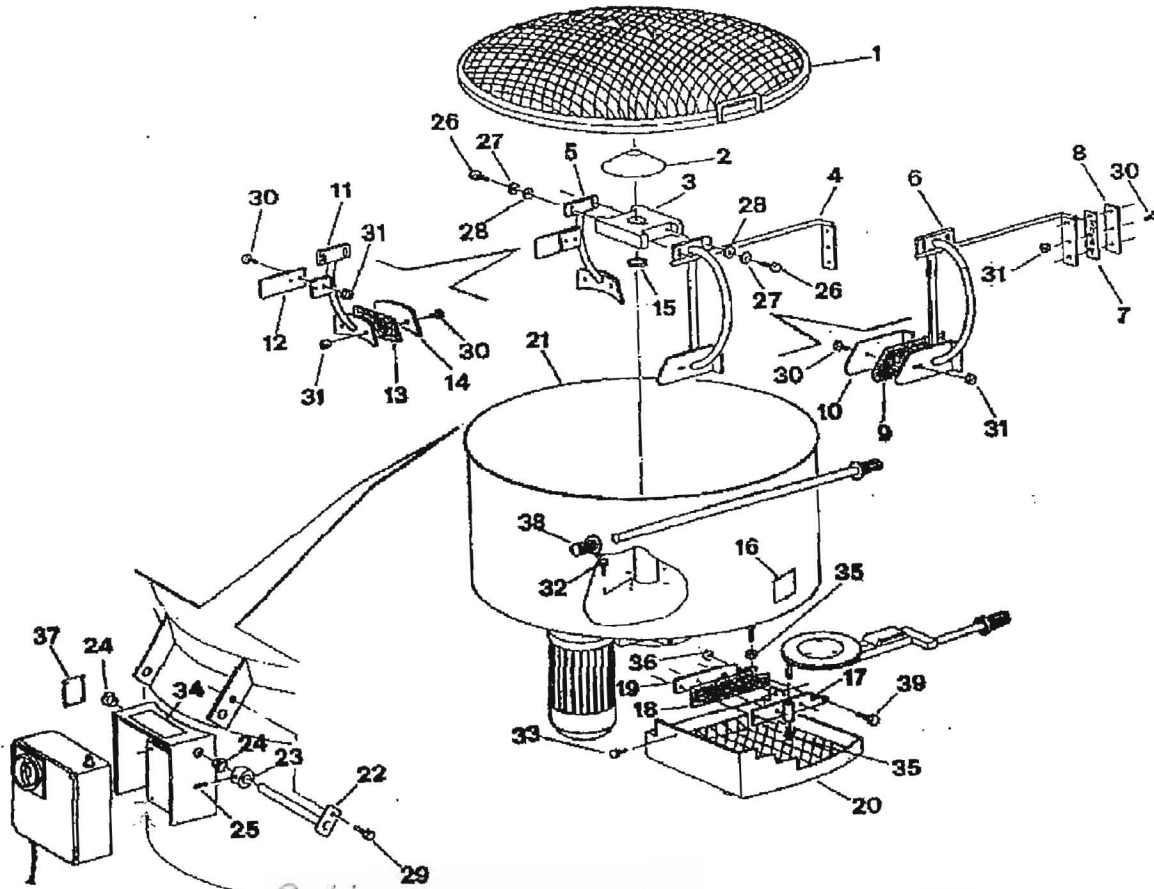
Ref.	P.n.	Description	Notes
1	3204530	Reduction gear	5240
1.1	3204520	Reduction gear	5241

Ref.1 P.n. 3204530 was installed on machines up to N° 5240 and Pos.1.1 P.n. 3204520 installed on machine N° 5241 onwards.

Pos. 1.1 is interchangeable () with Ref. 1.

Ref. 1 and Ref. 1.1 are not interchangeable if the () symbol appears in the table.

TABLE 1 Mixer drum and paddle assembly



Bolts 4 EA to hold the switch box to the frame is 2222579



TABLE 1 Mixer drum and paddle assembly			
Ref.	P.n.	Description	NOTES
1	2242077	DRUM SAFETY GRATE	
2	2252606	MUSHROOM CAP	
3	2250265	DRIVE PLATE	
4	2250913	ROTARY PADDLE	
5	2250972	INNER PADDLE COMPLETE	
6	2250914	ROTARY PADDLE	
7	2250936	RUBBER WIPER	
8	2294783	WIPER ANCHOR PLATE	
9	2250937	RUBBER WIPER	
10	2294773	WIPER ANCHOR PLATE	
11	2250976	INNER PADDLE	
12	2250977	PADDLE BLADE	
13	2250938	RUBBER WIPER	
14	2294772	WIPER ANCHOR PLATE	
15	2207750	SEAL	
16	2288205	DECAL	
17	2253831	WIPER ANCHOR PLATE	
18	2247877	WIPER ANCHOR PLATE	
19	2253830	RUBBER WIPER	<i>Rubber Plate</i>
20	2252144	DISCHARGE SAFETY GRATE	
21	2250401	MIXER DRUM	
22	2201912	PIVOT SHAFT	
23	2209952	COLLAR	
24	2209953	BUSHING	
25	2225150	SET SCREW	5927 10x10
26	2222007	BOLT	5739 12x35
27	2224900	WASHER	DEV. C72 Ø12
28	2224380	WASHER	Ø12x25
29	2222002	BOLT	5939 6X16
30	2222599	ALLEN BOLT	5933 10x25
31	2223655	NUT	5989 M10
32	2222586	ALLEN BOLT	5933 8x15
33	2222064	BOLT	5939 8x16
34	2247878	CUSHION PAD	
35	2223921	NUT	M12
36	2223924	NUT	M6
37	2287506	I.D. PLATE	
38	2288893	GRIP	
39	2222607	BOLT	5933 6x20



TABLE 2 Dump gate			
Ref.	P.n.	Description	NOTES
0.1	2250731	DUMP GATE COMPLETE	
1	2209821	BUSHING	
2	2209822	BUSHING	
3	2222600	SCREW	TSPI 6x25
4	2223006	BOLT	
5	2223920	NUT	Autob. M10
6	2223924	NUT	Autob. M6
7	2225032	DISC	
8	2231235	SPRING	
9	2237795	ACTUATOR	
10	2253860	BASE PLATE	
11	2254016	ACTUATOR FRAME	
12	2259893	ACTUATING ARM	
13	2288885	GRIP	
14	2292580	SEAL	

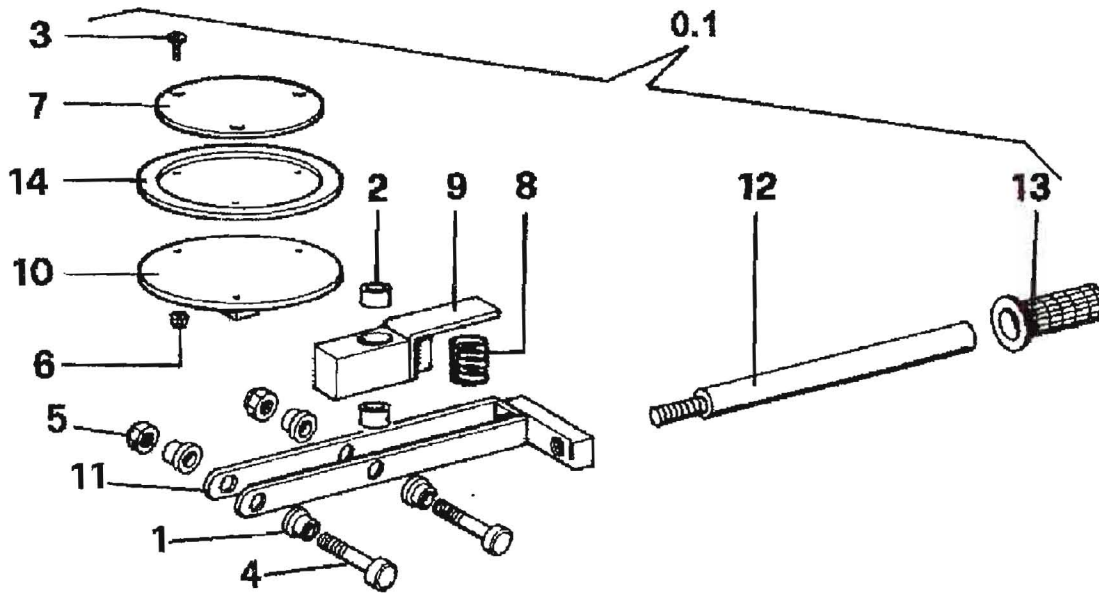




TABLE 3 Lower frame assembly

Ref.	P.n.	Description	NOTES
1	2211100	WHEEL	
2	2248207	TRIPOD FRAME	
3	2255215	T - BAR	
4	2256141	STRUT	
5	2226700	SLIP PIN	3.5/72 - 113
6	2228840	ANCHOR PIN	
7	2222006	BOLT	5739 8x30
8	2223923	NUT	Autob. M8
9	2224204	WASHER	Ø 8x24

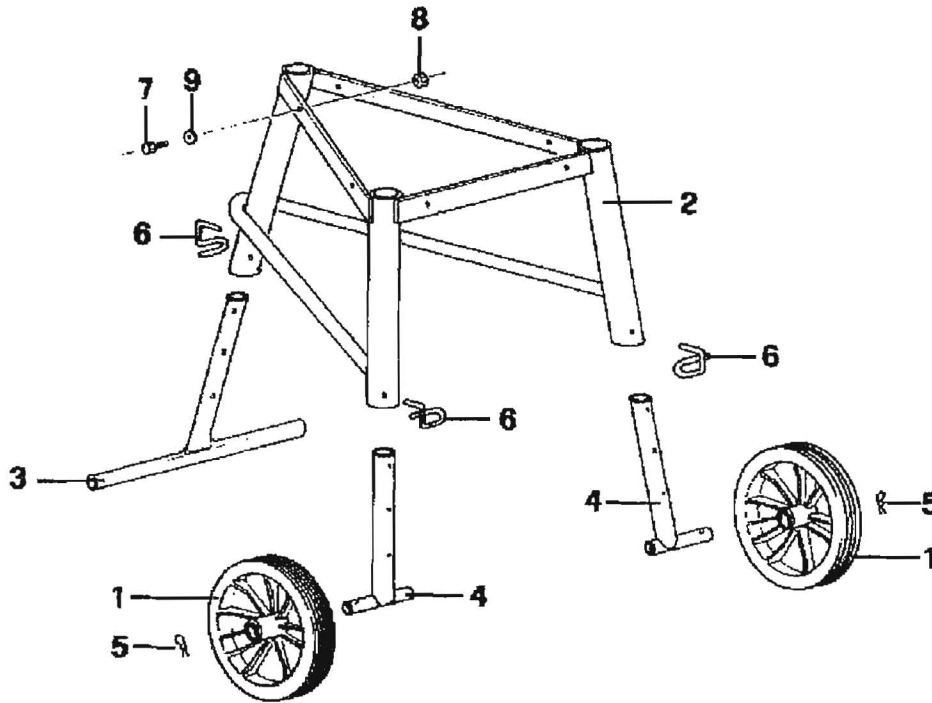




TABLE 4.1 - 110V 60Hz Motor and gearbox (1194500)

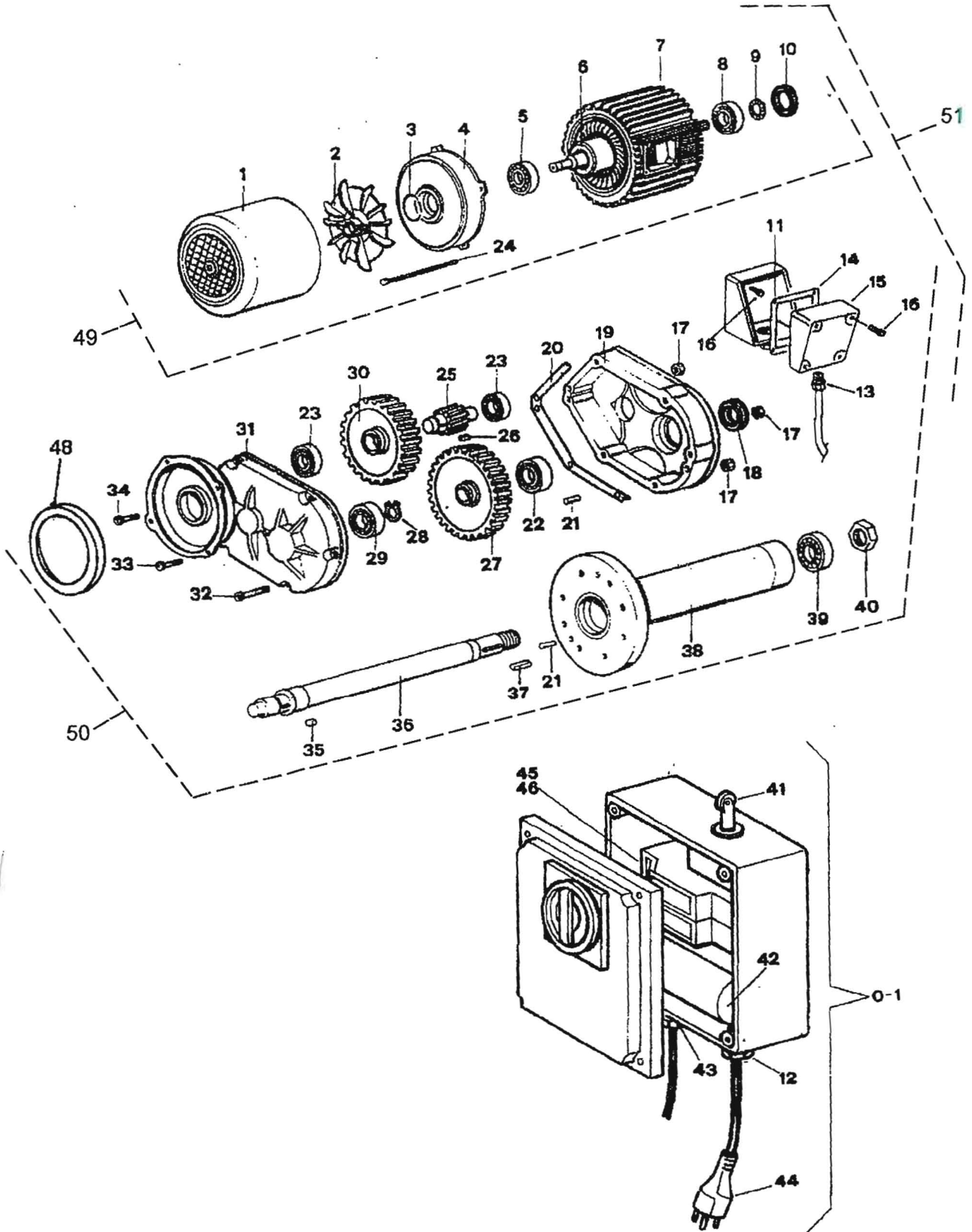




TABLE 4.1 - 110V 60Hz Motor and gearbox (1194500)

Ref.	P.n.	Description	NOTES
0.1	2274949	CONTROL BOX	
1	2291270	FAN HOUSING	
2	2291466	FAN	
3	2227097	O-RING	
4	2271551	BELL HOUSING	
5	2204390	BEARING	
6	2290804	ROTOR	
7	2290914	STATOR	
8	2204442	BEARING	
9	2237339	COMPRESSIONW RING	
10	2207300	SEAL	
11	2291501	CONTROL BOX	
12	2278070	CABLE GUARD	
13	2278059	CABLE GUARD	
14	2216324	GASKET	
15	2291502	COVER PLATE	
16	2222461	SCREW	
17	2223280	NUT	5588 M6 X
18	2207405	SEAL	
19	2236561	CASE HALVE	1109
19.1	3203223	CASE HALVE	1110
20	2216332	ASKET	
21	2228820	CATING PIN	
22	2204504	BEARING	
23	2204420	BEARING	
24	2222970	BOLT	
25	2202857	INION	
26	2229249	KEY	
27	2202519	GEAR	
28	2227240	IRCLIP	3653 E/30 X
29	2204550	BEARING	
30	2202491	GEAR	
31	2215007	CASE HALVE	1109
31.1	2215006	CASE HALVE	1110
32	2222551	SCREW	5931 6x20
33	2222548	SCREW	5931 6x55
34	2222546	SCREW	5931 6x40
35	2229500	KEY	8x7x15
36	2201186	RME SHAFT	
37	2229555	KEY	10x8x40
38	2258011	RME SHAFT HOUSING	
39	2204505	BEARING	
40	2223836	NUT	5589 M30x2
41	2286355	INTERRUPTEUR	
42	2285311	CONDENSER	40 F 250V
43	2278072	CABLE GUARD	
44	2277802	POWER CORD WITH PLUG	
45	2280825	FUSE - HOLDER	
46	2290655	FUSE	20A 10 3x38
47	2276082	SWITCH	PG 11
48	3203224	CASE HALVE 3203224	1110
49	3209976	MOTOR	
50	3214801	ASSEMBLY REDUCTION GEAR	
51	2276253	GEARMOTOR COMPLETE	



EQUIPMENT WARRANTY

IMER U.S.A. INC.

3654 Enterprise Avenue
Hayward, 94545 California
Toll Free (800)275-5463
Office: (510)670-7970
Fax (510) 783-4255

We warrant to the original purchaser that the IMER equipment described herein (the "equipment") shall be free from defects in material and workmanship under normal use and service for which it was intended for period of one (1) year from the date of purchase by the original purchaser.

Our obligation under this warranty is expressly limited to replacing or repairing, free of charge, F. O.B. our designated service facility, such part of the equipment as our inspection shall disclose to be defective. Parts such as engines, motors, pumps, valves, electric motors, etc. furnished by us, but not manufactured by us, will carry only the warranty of the manufacturer. Transportation charges or duties shall be borne by purchaser. This shall be the limit of our liability with respect to the quality of the equipment.

This warranty shall not apply to any equipment, or parts thereof, which has been damaged by reason of accident, negligence, unreasonable use, faulty repairs, or which has not been maintained and operated in accordance with our printed instructions for the equipment. Further, this warranty is void if the equipment, or any of its components, is altered or modified in any way.

THIS WARRANTY IS EXPRESSLY IN LIEU OF ALL OTHER WARRANTIES, EXPRESSED OR IMPLIED, INCLUDING ANY IMPLIED WARRANTY OF MERCHANTABILITY OR FITNESS FOR A PARTICULAR PURPOSE.

We make no other warranty, representation or guarantee, nor is anyone authorized to make one on our behalf. We shall not be liable for consequential damage of any kind, including loss or damage resulting, directly or indirectly, from the use or loss of use of the machine. Without limiting the generality of the foregoing, this exclusion from liability embraces the purchaser's expenses for downtime, damages for which the purchaser may be liable to other person, damages to property, and injury or death of any persons.

This warranty shall not be deemed to cover maintenance parts, including but not limited to blades, belts, hoses, hydraulic oil, or filters, for which we shall have no responsibility or liability whatsoever.



IMER U.S.A. Inc.
READYMAN® 120"A"

When you mail the Guarantee-Registration Card below, your



IMER U.S.A. INC.

Guarantee is void unless Guarantee-Registration Card is returned to us within 10 days o delivery. (The terms off our Guarantee are given on the back off this card.)

IMER U.S.A. INC.

3654 Enterprise Avenue
Hayward , 94545 California
Toll Free (800)275-5463
Office: (510)670-7970
Fax (510) 783-4255

"TOOLS AND SERVICES FOR THE 21st CENTURY"

FILL OUT CARD BELOW - TEAR OFF AND MAIL

Guarantee-Registration Card

(Return this card within 10 days after delivery of your new machine)

My Name _____
My Address _____
City, State _____
Zip, Code _____
Type of Machine _____
 Model _____
 Serial N. _____
Purchased from _____
City, State _____
Zip Code _____
Date Delivered _____
Condition of crate package at time of delivery _____

Information asked below is required for guarantee but will help us provide you better service.

Do you have other IMER USA Inc products?

Yes No

What type of material will be cut this Machine?

Do you wish FACTORY RECOMMENDATIONS for this type of material? _____

Yes No

Thank you for the opportunity to be of service.

IMER U.S.A. INC.

3654 Enterprise Avenue
Hayward , 94545 California
Toll Free (800)275-5463
Office: (510)670-7970
Fax (510) 783-4255



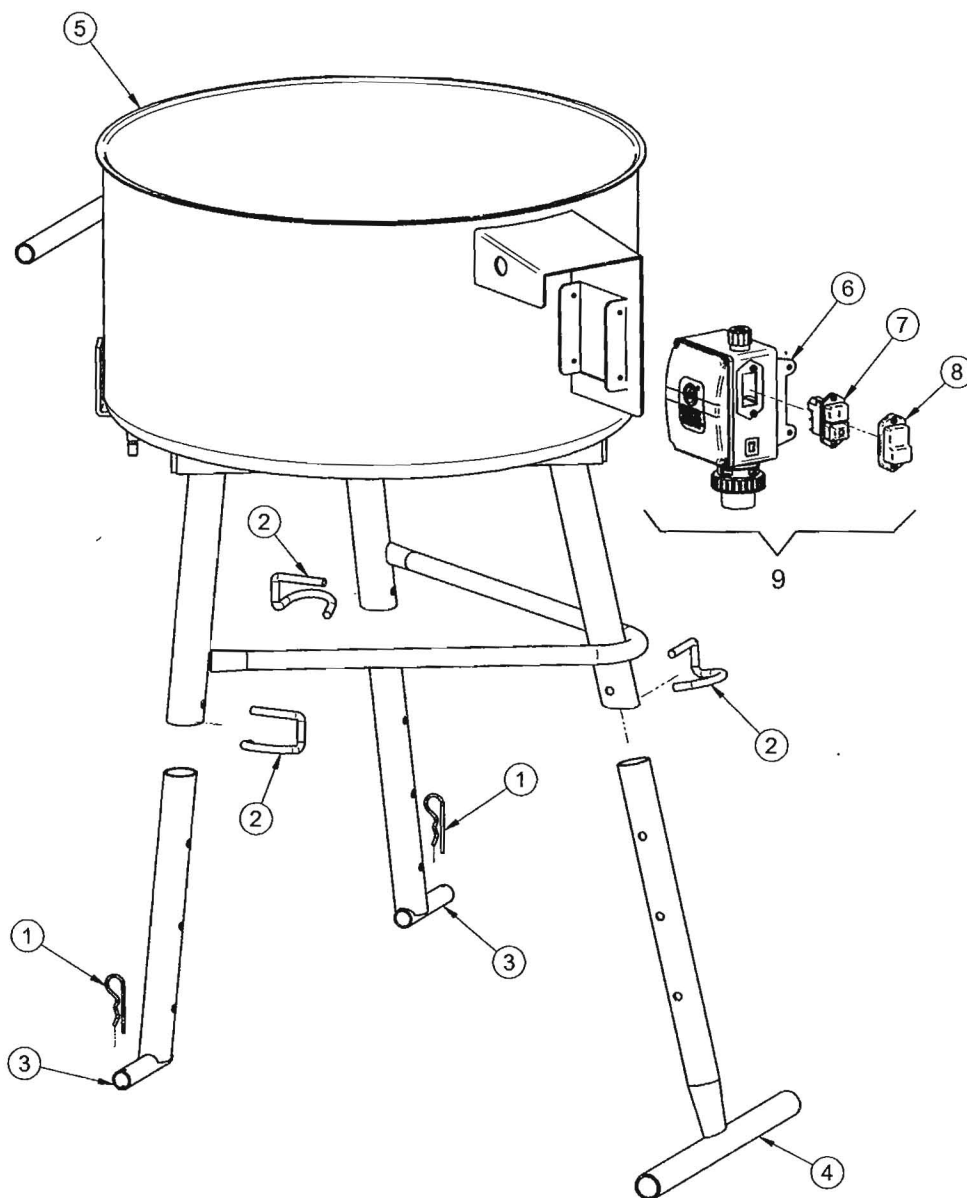
As soon as your Guarantee-Registration Card is received, the Serial Number of your IMER USA Inc. Machine will be registered in our log and our guarantee will be in effect.

Your IMER USA Inc. Machine is guaranteed against mechanical defects for one year from date of purchase. Special parts such as engines, motors, power transmissions, etc., not of IMER USA Inc. manufacture are guaranteed as stated in the operating instructions accompanying the machine.

"This guarantee does not apply if the above equipment 1) has been repaired without factory direction or 2) if it has been damaged by improper assembling or 3) from other cause for which the user is responsible, or 4) used for an improper purpose. Thoroughly inspect the above equipment periodically and give prompt notice of any defects if you desire this guarantee to remain effective".

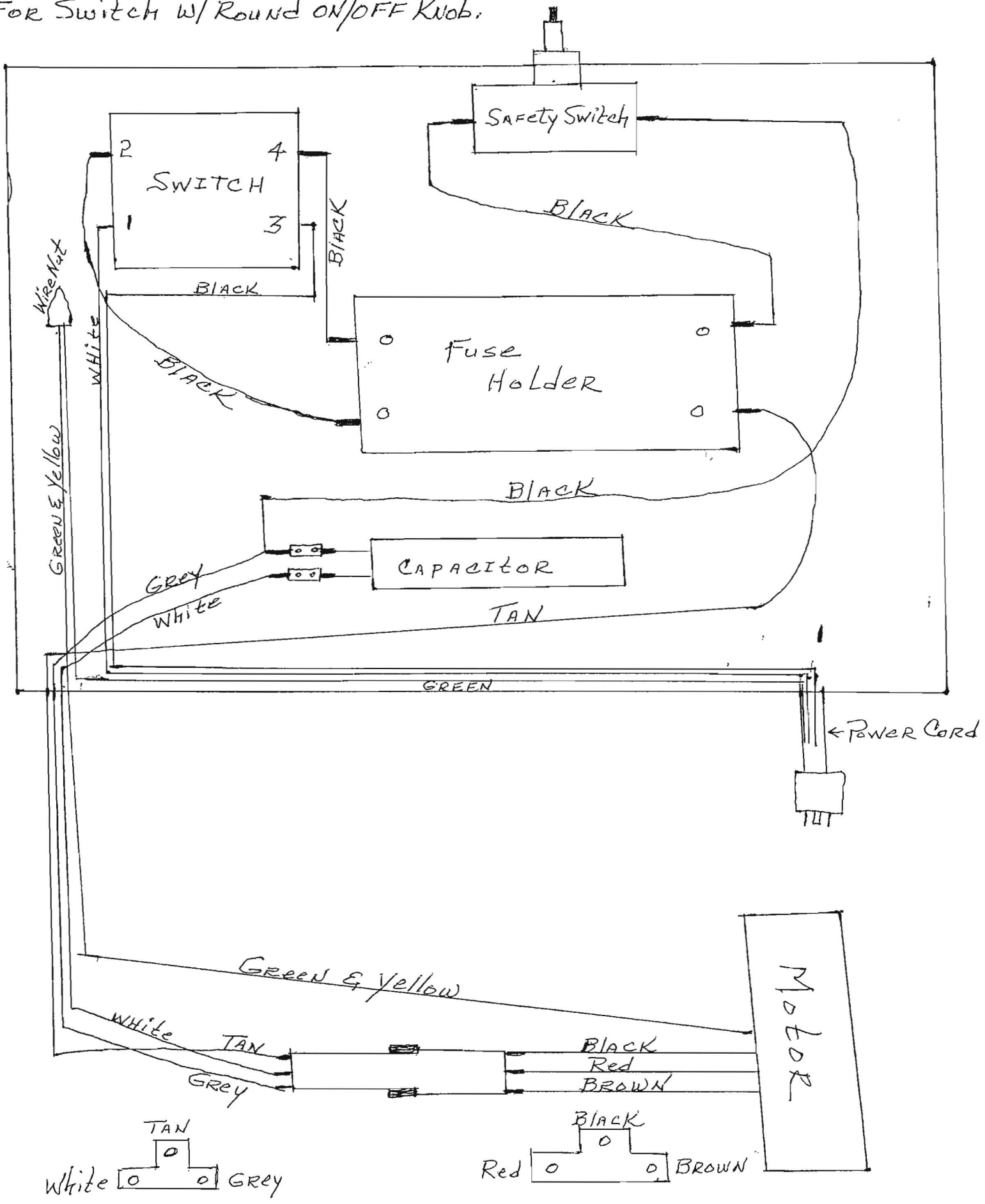
IMER *U.S.A. INC.*

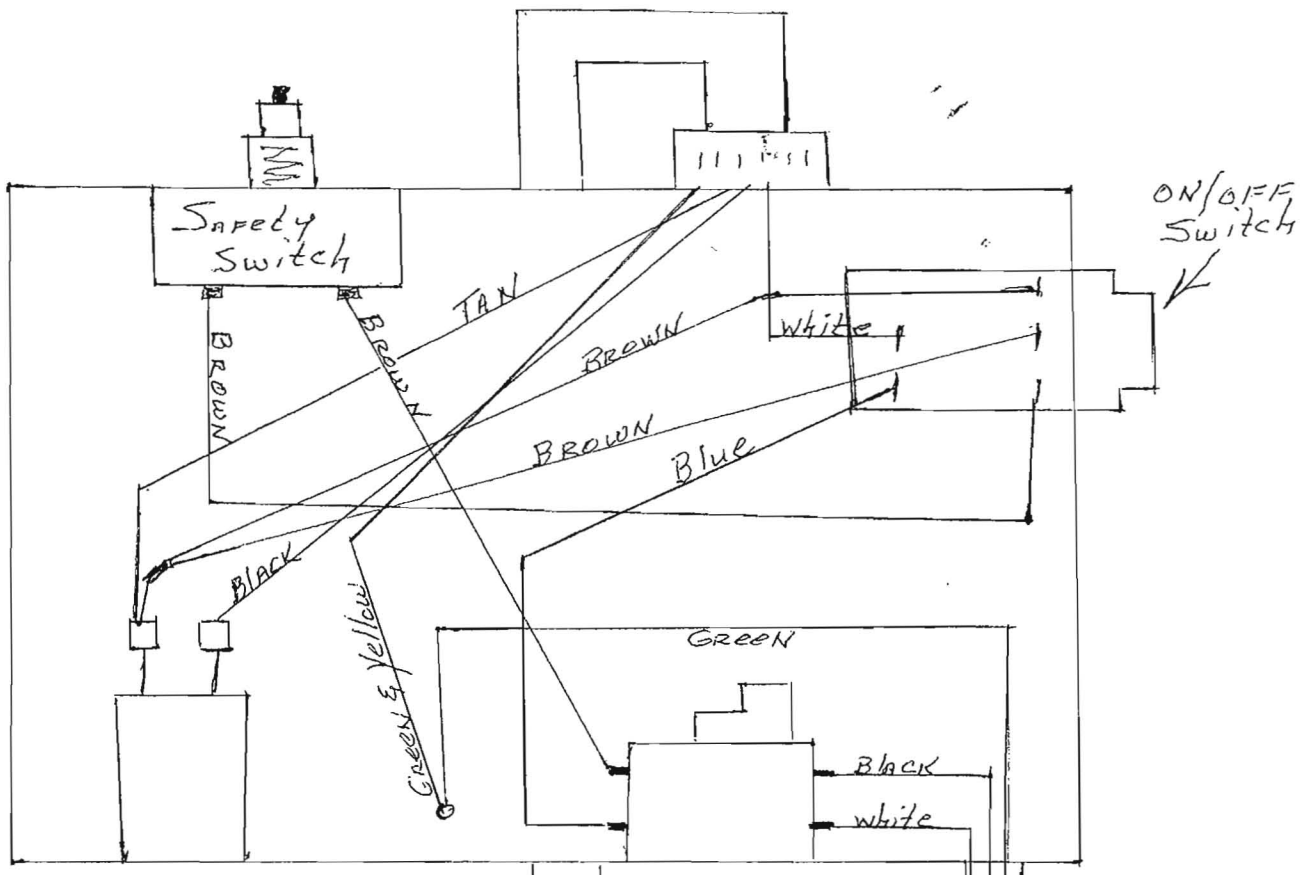
3654 Enterprise Avenue
Hayward, 94545 California
Toll Free (800)275-5463
Office: (510)670-7970
Fax (510) 783-4255

ERRATA CORRIGE

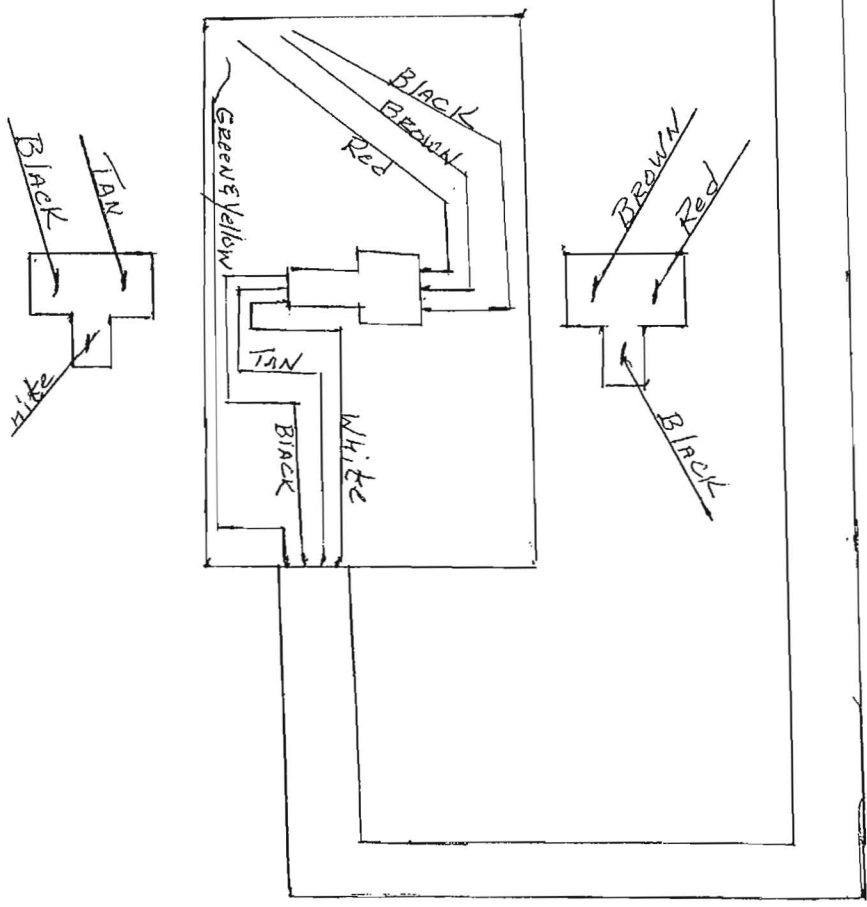
RIF.	COD.	I	F	GB	D	E
1	2226700	COPIGLIA	GOUILLE	SPLIT PIN	KLAPPSPLINT	CHAVETA
2	2228840	PERNO	PIVOT	PIN	ZAPFEN	PERNO
3	3211592	GAMBA	PIED	AXLE	FUß	PATA
4	3228300	TIMONE	TIMON	SUPPORT LEG	DEICHSEL	TIMÓN
5	3228326	VASCA	CUVE	TANK	TROG	RECIPIENTE
6	3228411	CASSETTA ELETTRICA	BOITIER ÉLECTRIQUE	ELECTRICAL BOX	SCHALKASTEN	CAJA ELÉCTRICA
7	3210233	INTERRUTTORE	INTERRUPTEUR	SWITCH	SCHALTER	INTERRUPTOR
8	3209340	PROTEZIONE TRASPARENTE	PROTECTION TRASPARENTE	LEAKAGE PROTECTION	PROTECCIÓN TRASPARENTE	PROTECCICN
9	3228322	QUADRO ELETTRICO	TABLEAU ÉLECTRIQUE	ELECTRIC PANEL	SCHALKASTEN	CUADRO ELÉCTRICO

1/31/08 MORTAR MAN 120 WIRING DIAGRAM
FOR SWITCH W/ ROUND ON/OFF KNOB.





Motor



MOTOR MAN 120
w/ Push Button Switch



This is a contact addendum to our manuals

Imer USA East

221 Westhampton Pl
Capitol Heights, MD 20743

Phone: 301-336-3700

Fax: 301-336-6687

Order Fax:301-336-5811

Imer USA West

3654 Enterprise Ave
Hayward, CA 94545

www.imerusa.com

800-275-5463