

Lippage is a HUGE ISSUE It's our TURN to HELP

The only one with 2 elements

Save 3 pieces on intersections



ADVANTAGES

- 1 Simple and quick to lay **with only 2 elements: Leveler & Cap**. No need for expensive hand tools.
- 2 The only worldwide leveling system with multiple size levelers. Built in spacers are available to accommodate “+” intersections as well as “T” joints **with a single leveler saving up to 3 pieces** per joint.
- 3 The only System capable of leveling 2 to 40 mm floors and wall coverings with only 2 parts: **Leveler & Cap**. Simply flip the cap over to work with various thicknesses.
- 4 Current joint sizes are 1 mm, 2 mm and 3 mm with more in development.

PATENT PENDING
Multiple solutions



Kicking the clip in the direction of the joint.

DESCRIPTION

Proleveling System is a revolutionary and innovative leveling system when laying medium and large materials with a thickness between 2 and 40 mm.

The patented system is made of 2 elements:

- A **leveling** base (1-2-3 mm size) with spaced notches that allow spacing/separating/ joining floors of any type and material in a way that is: linear, cross and half cross with joints to be chosen between 1 mm, 2 mm and 3 mm.

- The threaded stem is attached perpendicularly to the base in a way that allows for easy adjustment with **turns** of the **cap** during installation. Removal of the **cap** and Stem after the materials are set is made easy with strategically placed breakage points that release with either increased pressure by turning the **cap** or by kicking the **cap** in the direction of the joint.

- 5 Vertical compression reduces movement and widening of joints.
- 6 The thin base of the leveler allows for easy placement without mortar accumulation.
- 7 The shaped hole in the middle of the cross- and T-shaped levelers allow a perfect control of the tiles lining up. Moreover the holes on their base enable a perfect anchoring between adhesive and tile.



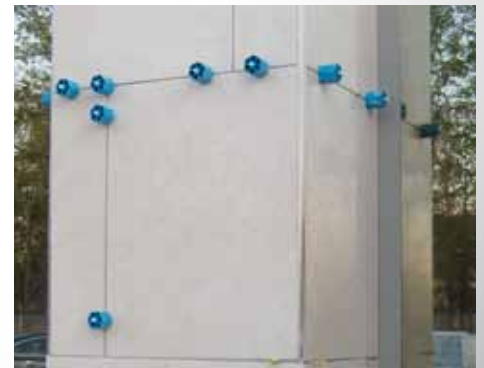
T-shaped leveler installation.



Linear leveler installation.



By turning the cap it is possible to level a thickness of up to 40 mm with an 8 mm joint.



LAYING SYSTEM

One **cap** fits all threaded stems and can be **reused** an infinite amount of times for **big cost savings**.

The new PPLS (patented) system assists in the reduction or elimination of ledging and lippage in the installation of various types of materials that are applied to floors or walls with mortar including: Large Format Tile, Natural Stone, Thin Profile Tile and many others.

- a) Choose the desired type of Leveler (spacers) based on the requested joints and joining:
 - 1 mm Linear Version
 - 2 mm Linear, Cross and Half Cross Version
 - 3 mm Linear, Cross and Half Cross Version
- b) Apply the thinset or mortar on a level base with the proper notched trowel as called out in the setting materials manufacturer's installation instructions.
- c) During the application of the tile or other materials,

TECHNICAL SPECIFICATIONS



PRSL 1
PRSL 2
PRSL 3



PRST 2
PRST 3



PRSC 2
PRSC 3



PRST

LINEAR LEVELER PROLEVELING SYSTEM

Article	thick mm	Pack Pcs.	Box
PRSL 1	1	100	3000 Pcs
PRSL 2	2	100	3000 Pcs
PRSL 3	3	100	3000 Pcs

"T" LEVELER PROLEVELING SYSTEM

Article	thick mm	Pack Pcs.	Box
PRST 2	2	100	3000 Pcs
PRST 3	3	100	3000 Pcs

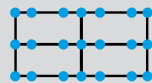
CROSS LEVELER PROLEVELING SYSTEM

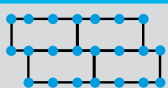
Article	thick mm	Pack Pcs.	Box
PRSC 2	2	100	3000 Pcs
PRSC 3	3	100	3000 Pcs

ROTATING POMMEL CAP FOR LEVELER PROLEVELING SYSTEM

Article	Pack Pcs.	Box
PRST	50	800 Pcs

Tiles inches x inches	12" X 12"	16" X 16"	16" X 16"	20" X 20"	24" X 24"	32" X 32"	35" X 35"	48" X 48"	SQUARE LAYING
U. / MQ	11	6	20	16	11	9	10	7	

Tiles inches x inches	16" X 32"	18" X 35"	48" X 12"	48" X 16"	48" X 24"	RECTANGULAR LAYING
U. / MQ	9	15	11	8	10	

Tiles inches x inches	4" X 40"	5" X 40"	6" X 40"	8" X 40"	4" X 48"	5" X 48"	6" X 48"	8" X 48"	4" X 32"	5" X 32"	6" X 32"	8" X 32"	9" X 35"	18" X 35"	48" X 24"	16" X 32"	STAGGERED LAYING
U. / MQ	40	33	27	20	33	28	22	17	37	31	19	25	15	10	7	9	

The quantity can be significantly reduced using crosses and "T" shapes. Prices are indicative for the 1 mm leveler.

- position the base of the chosen Leveler under the edge of the tile at the appropriate joint location and continue laying in sequence.
- d) Attach the cap to the threaded stem by rotating it clockwise. Level the joint by rotating the cap using the minimum amount of pressure needed.

- e) Once the setting materials have become solid and the floor or wall is ready for grout:
 - Kick the cap in the direction of the joint to detach connection points between Base and stem.