

# 18V LXT® LITHIUM-ION BRUSHLESS CORDLESS 4-1/2" / 5" X-LOCK ANGLE GRINDER, WITH AFT®, TOOL ONLY



## NEW TOOL OVERVIEW XAG25Z

### LXT® BRUSHLESS

#### FEATURES

- Automatic Speed Change™ technology adjusts speed and torque during operation for optimum performance
- Soft start suppresses start-up reaction for smooth start-ups and longer gear life
- Anti-restart protection engineered to prevent motor start up when battery is inserted with switch locked on
- Quick guard rotation allows easy tool-less adjustment for increased productivity
- Slide switch with lock-on for operator convenience

#### SPECIFICATIONS

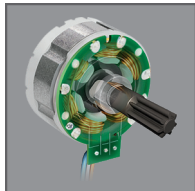
<b>Battery</b> .....	18V LXT® Lithium-Ion
<b>Wheel Diameter</b> .....	5"
<b>No Load Speed</b> .....	8,500 RPM
<b>Spindle Type</b> .....	X-LOCK
<b>Lock-On Switch</b> .....	Yes
<b>Lock-Off Switch</b> .....	No
<b>Switch Type</b> .....	Body grip/slide
<b>Electric Brake</b> .....	No
<b>Variable speed dial</b> .....	No
<b>Overall Length</b> .....	14-3/4"
<b>Net Weight (with battery)</b> .....	6.6 lbs.
<b>Shipping Weight</b> .....	7.6 lbs.
<b>UPC Code</b> .....	088381-728997
<b>Bind-Up Control</b> .....	Yes



**X-LOCK**



#### PRODUCT HIGHLIGHTS



#### POWER

Brushless Motor eliminates carbon brushes, enabling the motor to run cooler and more efficiently



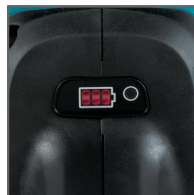
#### CONTROL

AFT® turns the motor off if rotation of the wheel is suddenly forced to stop



#### INNOVATION

X-LOCK quick change system allows for easy tool-less wheel changes



#### CONVENIENCE

3-stage L.E.D. gauge indicates battery charge level

#### STANDARD EQUIPMENT

- Side Handle (158237-4)
- X-Lock 5" X .045" X 7/8" Metal & Stainless Thin Cut-Off Wheel, 60 Grit (E-00474)
- X-Lock 5" X 1/4" X 7/8" Metal & Stainless Grinding Wheel, 36 Grit (E-00468)
- 5" Tool-less Wheel Guard (140T26-1)
- 5" Tool-less Cut-Off Guard (140U29-1)

#### RELATED PRODUCTS

1. X-LOCK 5" x 1/4" x 7/8" Metal & Stainless Grinding Wheel, 36 Grit (E-00468)
2. X-LOCK 5" x .045" x 7/8" Metal & Stainless Thin Cut-Off Wheel, 60 Grit (E-00474)
3. X-LOCK 5" Segmented Diamond Blade (E-07238)
4. LXT® and LXT® X2 (36V) Portable Backpack Power Supply (PDC01)
5. 18V LXT® Brushless 4-1/2" / 5" Paddle Switch X-LOCK Angle Grinder, with AFT® (XAG26Z)

