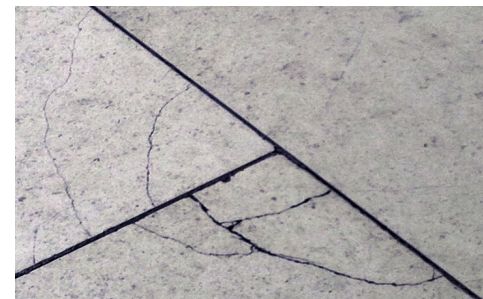
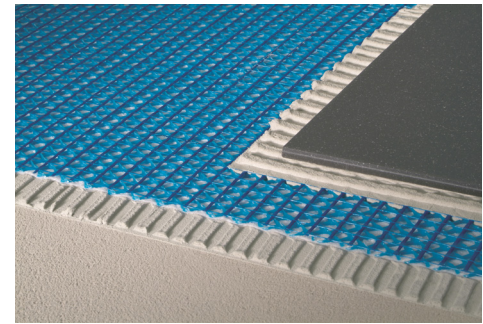


BLANKE



Protect your next tile or stone installation with **BLANKE PERMAT**, multifunctional underlayment

- Superior support for stone and mosaic floor installations
- Only warranty against vertical subfloor movement (deflection)
- Minimize transition/height issues (particularly to 3/4 inch hard wood)
- Prevent cracking on cement subfloors and installs with modified thinset



Why BLANKE PERMAT?

For tile and stone installations, BLANKE PERMAT offers amazing crack isolation protection, superior compression and tensile strength. BLANKE PERMAT reinforced mesh panel design adds major support to wood subfloors, greatly reducing vertical subfloor movement (deflection). And in many cases, using BLANKE PERMAT actually replaces the need for a second layer of plywood to reinforce a floor to be tiled with stone! That means there is no significant increase in the height of the tile and stone installation if BLANKE PERMAT is used!

10 Year Warranty

Importantly, **BLANKE PERMAT** has a 10-year warranty against damage caused by excessive vertical subfloor movement (deflection), the only such warranty in the industry. Whether installing tile or stone on wood or cement subfloors, homeowners who include **BLANKE PERMAT** in their tile and stone installations can rest assured their subfloors will indeed support the installation.

Advantages

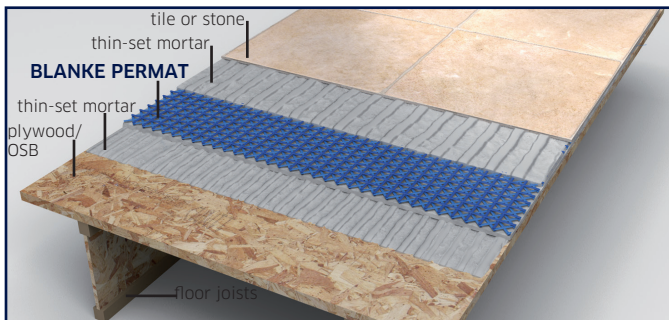
- Strengthens wood substrates
- Reduces vertical subfloor movement (deflection)
- Superior compressive strength
- Crack isolation properties (uncoupling)
- Superior resistance to delamination during installation
- Lightweight; easy to install
- Self-seaming panels prevent substrate movement stress from transmitting to tiled surface

BLANKE PERMAT - Suitable Subfloors - Tile and Stone

Top Mesh: Extruded twisted strands of highly alkali resistant glass fiber heat welded to the lower layer of high density polyethylene (HDPE) mesh.

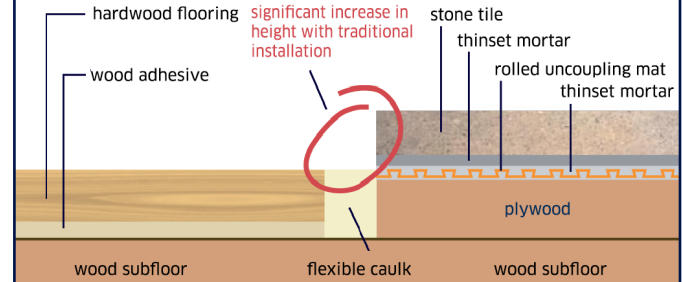
Bottom Mesh: Extruded twisted strands of alkali resistant HDPE
Fabric material: Polypropylene fleece
Thickness: Approx. 3.3 mm (nominal 1/8 inch)
Size: 1 panel: 2' x 3.2' (6.5 sq.ft.)
 30 panels/carton (195 sq.ft.)

For more information on technical data and installation:
www.blankecorp.com



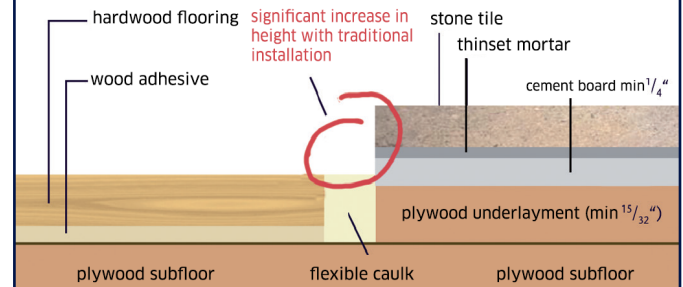
BLANKE PERMAT - Minimize Transition Heights

Without BLANKE PERMAT



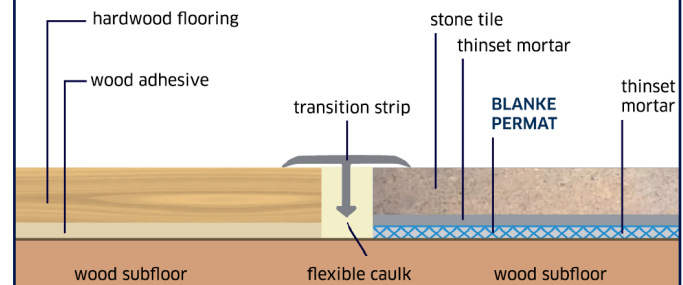
Traditional installation (rolled uncoupling mat) with a significant increase in the height of the stone tile and the adjoining wood flooring.

Without BLANKE PERMAT (cement board)



Traditional installation (cement board) with a significant increase in the height of the stone tile and the adjoining wood flooring.

With BLANKE PERMAT



BLANKE PERMAT installation with no increase in height of stone installation.

Floors Interior - Plywood or OSB Subfloors:

Porcelain/Ceramic over 3/4" ply/OSB with joist spacing 16", 19.2, and 24" o.c.
 Nat. Stone: 3/4" ply/OSB with joist spacing 16" or 19.2"; add 3/8" for 24" o.c.

Floors Interior - Cement Subfloors:

BLANKE PERMAT provides excellent protection against damage caused by stress cracks and lateral movement typically found in cement substrates.