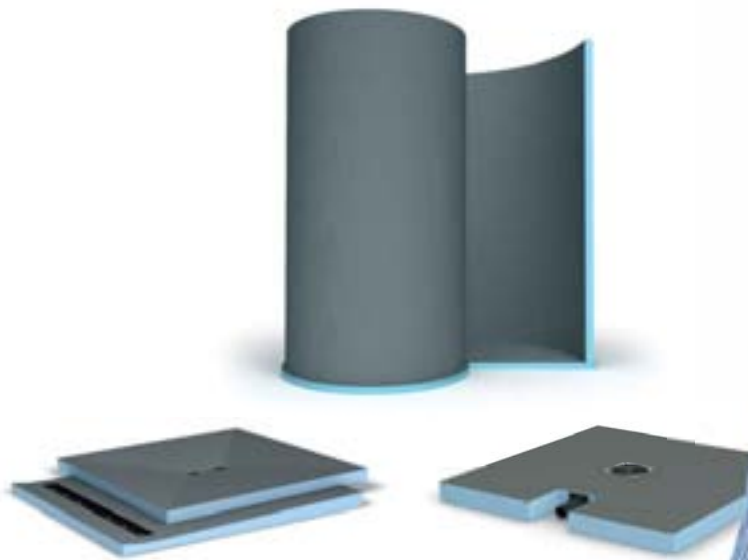


Fundo Shower Systems

Economical, safe and accessible!



Point drainage from Page 9



wedi Fundo Primo, square, central drain

900 × 900 × 40 mm 1200 × 1200 × 40 mm
1000 × 1000 × 40 mm 1500 × 1500 × 40 mm



wedi Fundo Primo, square, offset drain

900 × 900 × 40 mm 1200 × 1200 × 40 mm
1000 × 1000 × 40 mm 1500 × 1500 × 40 mm



wedi Fundo Primo, rectangular, central drain

900 × 750 × 40 mm 1800 × 900 × 40 mm
1200 × 900 × 40 mm 1400 × 1000 × 40 mm
1400 × 900 × 40 mm 1500 × 1000 × 40 mm
1500 × 900 × 40 mm

Linear drainage from Page 15



wedi Fundo Riolito, square, drain at the side

900 × 900 × 50 mm
1200 × 1200 × 50 mm



wedi Fundo Riolito, rectangular, drain at the side

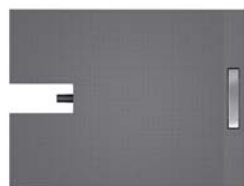
900 × 800 × 50 mm 900 × 1000 × 50 mm
1200 × 800 × 50 mm 1200 × 1000 × 50 mm
1200 × 900 × 50 mm 900 × 1200 × 50 mm
1800 × 900 × 60 mm



wedi Fundo Riofino, square, central drain

900 × 900 × 50 mm
1000 × 1000 × 50 mm
1200 × 1200 × 50 mm

Special solutions from Page 27



wedi Fundo Plano Linea, short channel

900 × 900 × 70 mm
1200 × 900 × 70 mm



wedi Fundo Plano Linea, long channel

900 × 900 × 70 mm
1200 × 800 × 70 mm
1200 × 900 × 70 mm
1200 × 1000 × 70 mm



wedi Fundo Ligno, square, central drain

900 × 900 × 20/41 mm
1200 × 1200 × 20/41 mm
1500 × 1500 × 20/41 mm



wedi Fundo Plano, square, central drain

900 × 900 × 65 mm
1000 × 1000 × 65 mm
1200 × 1200 × 65 mm



wedi Fundo Plano, rectangular, central drain

1200 × 900 × 65 mm



wedi Fundo Plano, rectangular, central drain

1200 × 900 × 65 mm

Special formats from Page 53



wedi Fundo Nautilo, left entry

1890 × 1515 × 50 mm



wedi Fundo Nautilo, right entry

1890 × 1515 × 50 mm



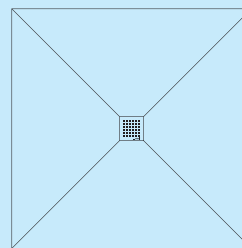
wedi Fundo Trollo, central drain

Ø 1140 × 40 mm



wedi Fundo Primo, rectangular, offset drain

1200 x 900 x 40 mm
1800 x 900 x 40 mm

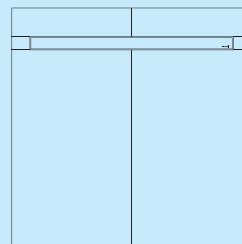


Example of tiling with
central point drain



wedi Fundo Riofino, rectangular, central drain

1200 x 900 x 50 mm
1800 x 900 x 50 mm

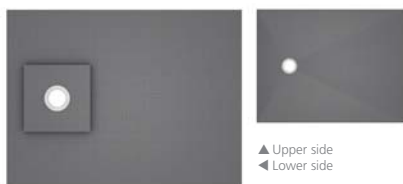


Example of tiling with
linear drain at the side



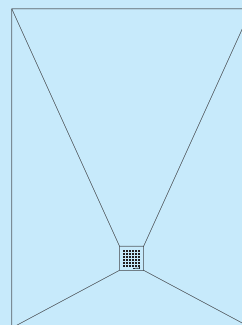
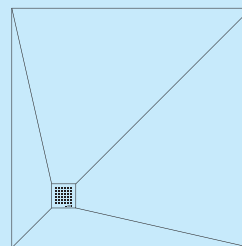
wedi Fundo Ligno, square, corner drain

900 x 900 x 20/41 mm
1200 x 1200 x 20/41 mm



wedi Fundo Ligno, rectangular, central drain

1200 x 900 x 20/41 mm
1600 x 900 x 20/41 mm



Example of tiling with
decentralised point drain



Wall drain top element for Fundo Riolo

800 x 180 x 76 mm
900 x 180 x 76 mm
1000 x 180 x 76 mm

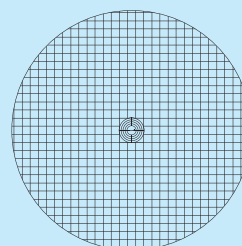


wedi Fundo fire protection collar



wedi Fundo Borgo, offset drain

900 x 900 x 40 mm
1000 x 1000 x 40 mm



Example of tiling with
central point drain



Wide variety of design,
function and size



Customisable without any
invalidation of warranty



Precise predefined
slope



With abP general
appraisal certificate



Accessible and able to take
the load of a wheelchair



Adjustable height for a
variety of tile thicknesses



Particularly robust
substructure structure



Very low
weight



Drainage very
simple to clean



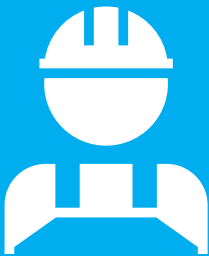
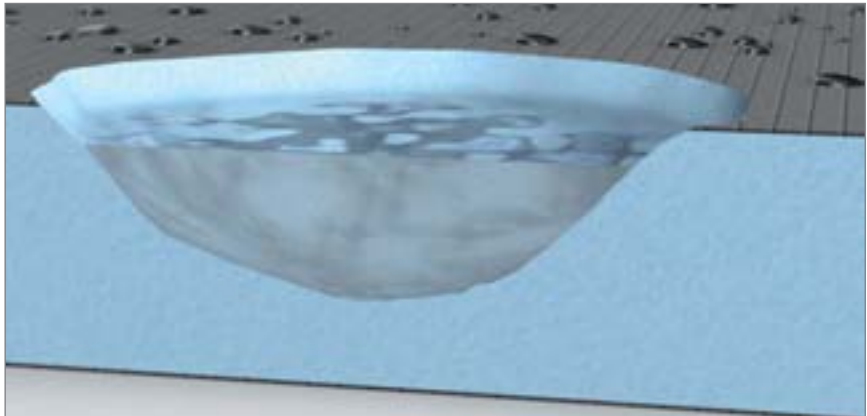
Custom models
possible



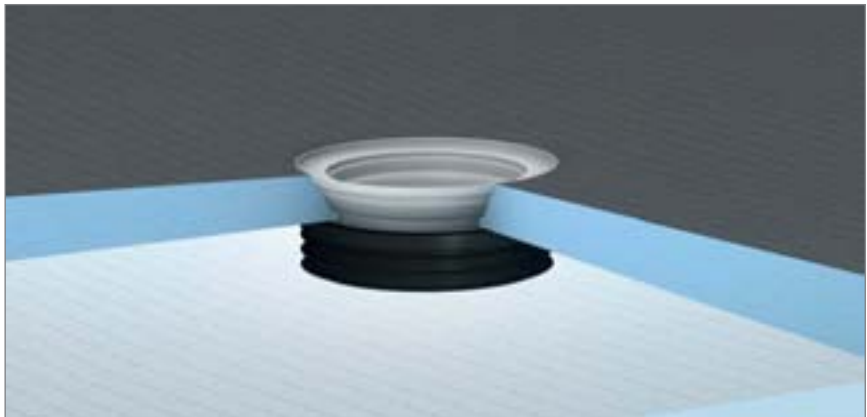
Solid **foundations**, for **well-founded** reasons.



Includes foam
100% waterproof over
the whole system



High system security
with manufacturer's
warranty



Installation benefits
save time and money



Technical properties of Fundo Primo / Trollo / Borgo / Nautilo

Wheelchair load-bearing from minimum tile size	50 x 50 mm
Glass mosaic from 3 mm, minimum size	20 x 20 mm
Minimum foundation height depending on the drain: horizontal drain, DN 50	130 mm
Minimum foundation height depending on the drain: horizontal drain Mini Max, DN 40	97 mm
Minimum foundation height depending on the drain: vertical drain	40 mm
Surface slope (from outer edge of Fundo floor element to outer edge of drain opening) (exception: Fundo Nautilo, 28 mm surface slope)	18 mm
Waterproof tested	1.5 bar
Fire behaviour EN 13501-1	E

Technical properties of Fundo Primo / Trollo / Borgo / Nautilo drains

Drainage rate Fundo drain Mini Max, horizontal, DN 40	0.54 l/s ; 32.4 l/min
Drainage rate Fundo drain, horizontal, DN 50	0.80 l/s ; 48.0 l/min
Drainage rate Fundo drain, vertical, DN 50	1.00 l/s ; 60.0 l/min
Drainage rate Fundo drain, vertical, DN 70	0.88 l/s ; 52.8 l/min

Technical properties of Fundo Plano | Horizontal drain (fixed in the element integrated) DN 40

Wheelchair load-bearing from minimum tile size	50 x 50 mm
Minimum foundation height	65 mm
Surface slope (from outer edge of Fundo Plano floor element to outer edge of drain opening)	≥ 2.4%
Frame with stainless steel grid (secured in the element)	136 x 136 x 8 mm
Stainless steel grid	132 x 132 mm
Extension frame	136 x 136 x 24.7 mm
Drainage rate	0.50 l/s ; 30.0 l/min

Technical properties of Fundo Ligno

Wheelchair load-bearing from minimum tile size	50 x 50 mm
Glass mosaic from minimum size	20 x 20 mm
Minimum foundation height depending on the drain: horizontal drain, DN 50	130 mm
Minimum foundation height depending on the drain: horizontal Riolito/Riofino drain Mini Max, DN 40	97 mm
Minimum foundation height depending on the drain: vertical drain, DN 50	40 mm
Surface slope (from outer edge of Fundo floor element to outer edge of drain opening) (exception: Fundo Nautilo, 28 mm surface slope)	18 mm
Fire behaviour DIN 4102	B1

Technical properties of Fundo Plano Linea | Horizontal drain (fixed in the element integrated) DN 40

Wheelchair load-bearing from minimum tile size	50 x 50 mm
Total assembly height incl. integrated drainage	70 mm
Surface slope (from outer edge of Fundo Plano Linea floor element to outer edge of drain opening)	≥ 1.19 %
Adjustment range for stainless steel covers	5 –25 mm
The Fundo Plano Linea is available with channels in the following lengths	300 to 900 mm
Drainage rate	0.40 l/s ; 24.0 l/min

Technical properties of Fundo Riolito & Riofino

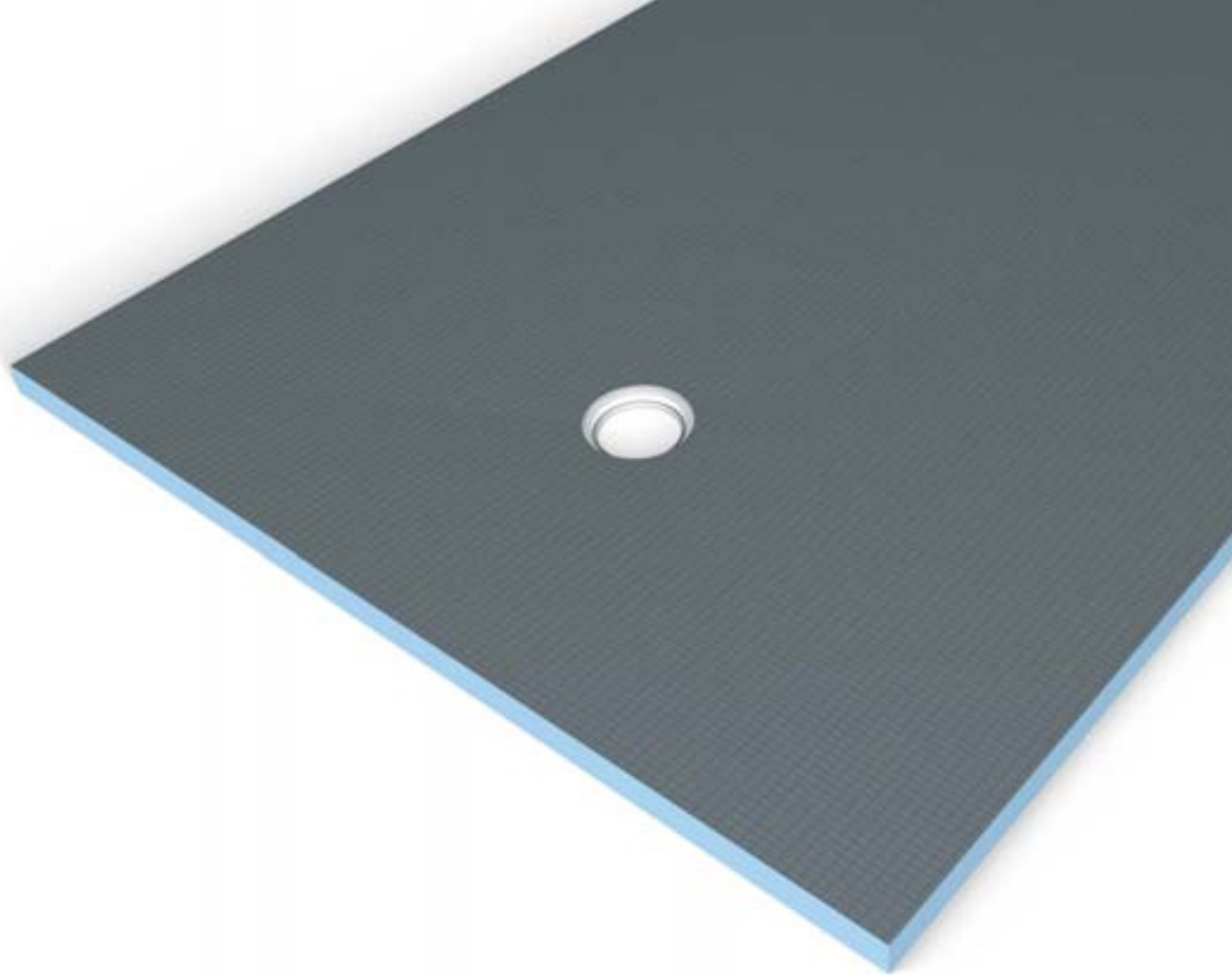
Wheelchair load-bearing from minimum tile size	50 x 50 mm
Glass mosaic from minimum size	20 x 20 mm
Minimum foundation height depending on the drain: horizontal drain, DN 50	130 mm
Minimum foundation height depending on the drain: horizontal Riolito/Riofino drain Mini Max, DN 40	97 mm
Minimum foundation height depending on the drain: vertical drain, DN 50	50 mm
Surface slope (from outer edge of Riolito & Riofino floor element to outer edge drain opening)	15 mm
Waterproof tested	1.5 bar
Fire behaviour EN 13501-1	E

Technical properties of Fundo Riolito & Riofino drains

Fundo Riolito & Riofino are available with channels in the following lengths	300 to 1100 mm
Drainage rate Fundo Riolito & Riofino drain, horizontal, DN 50	0.80 l/s ; 48.0 l/min
Drainage rate Fundo Riolito & Riofino drain Mini Max, horizontal, DN 40	0.40 l/s ; 24.0 l/min
Drainage rate Fundo Riolito & Riofino drain, vertical, DN 50	1.12 l/s ; 67.2 l/min







wedi Fundo *Primo*

Flush-to-floor shower element with classic point drainage

For classic point drainage in the shower, wedi Fundo Primo offers floor elements in a huge range of sizes. Whether square or rectangular, positioned in the centre of the room or in the corner, they offer the ideal solution for any space and can very easily be made into a complete shower place with the aid of the wedi building board.



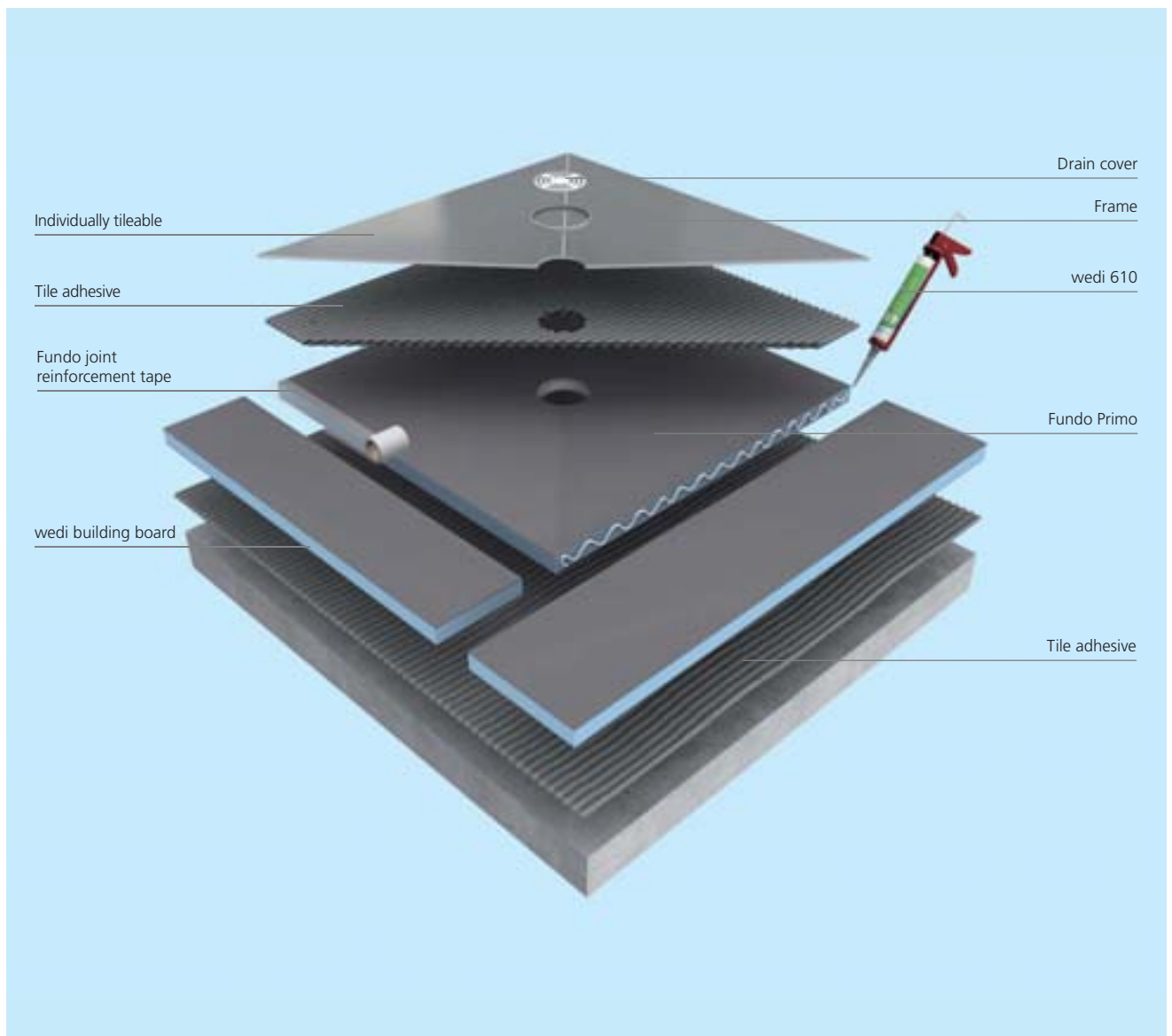
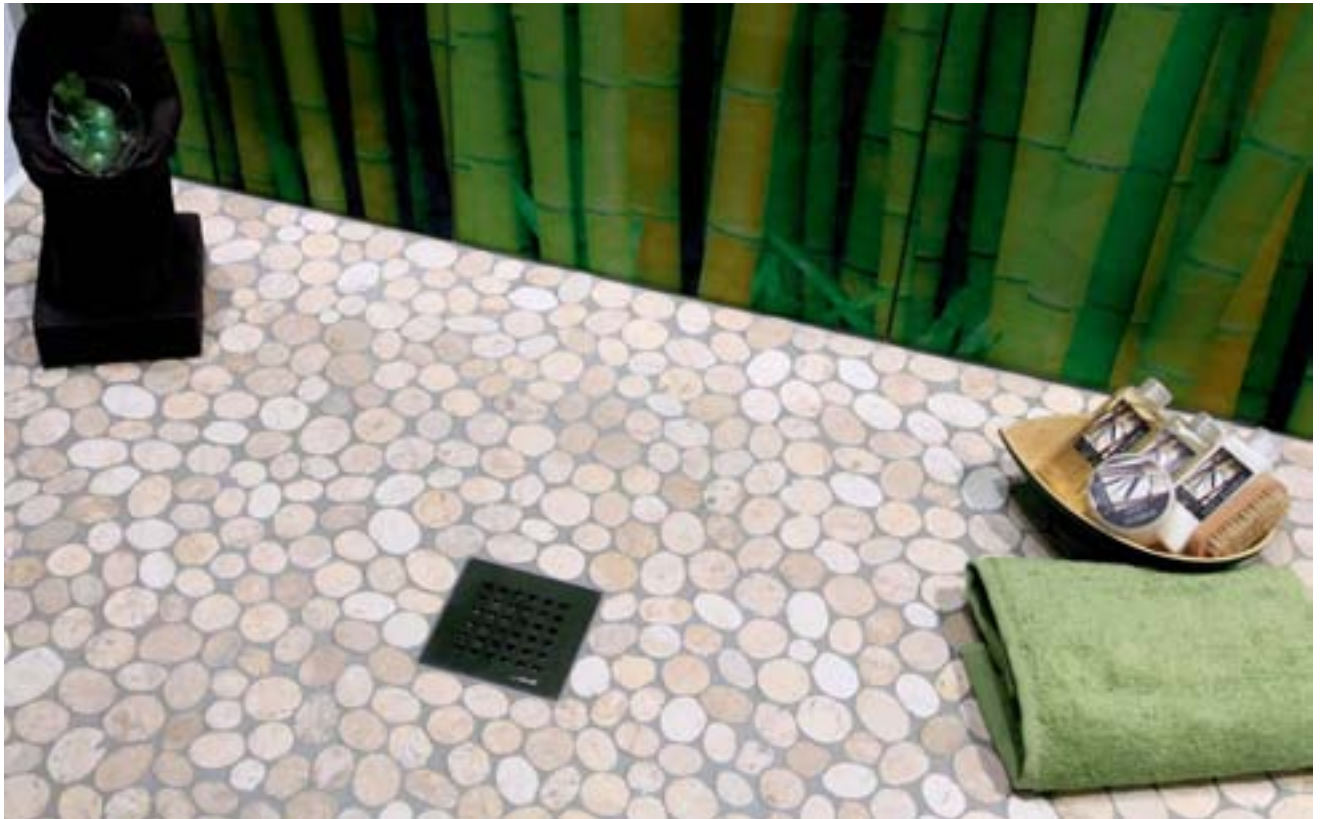
Exactly uniform
predefined gradient

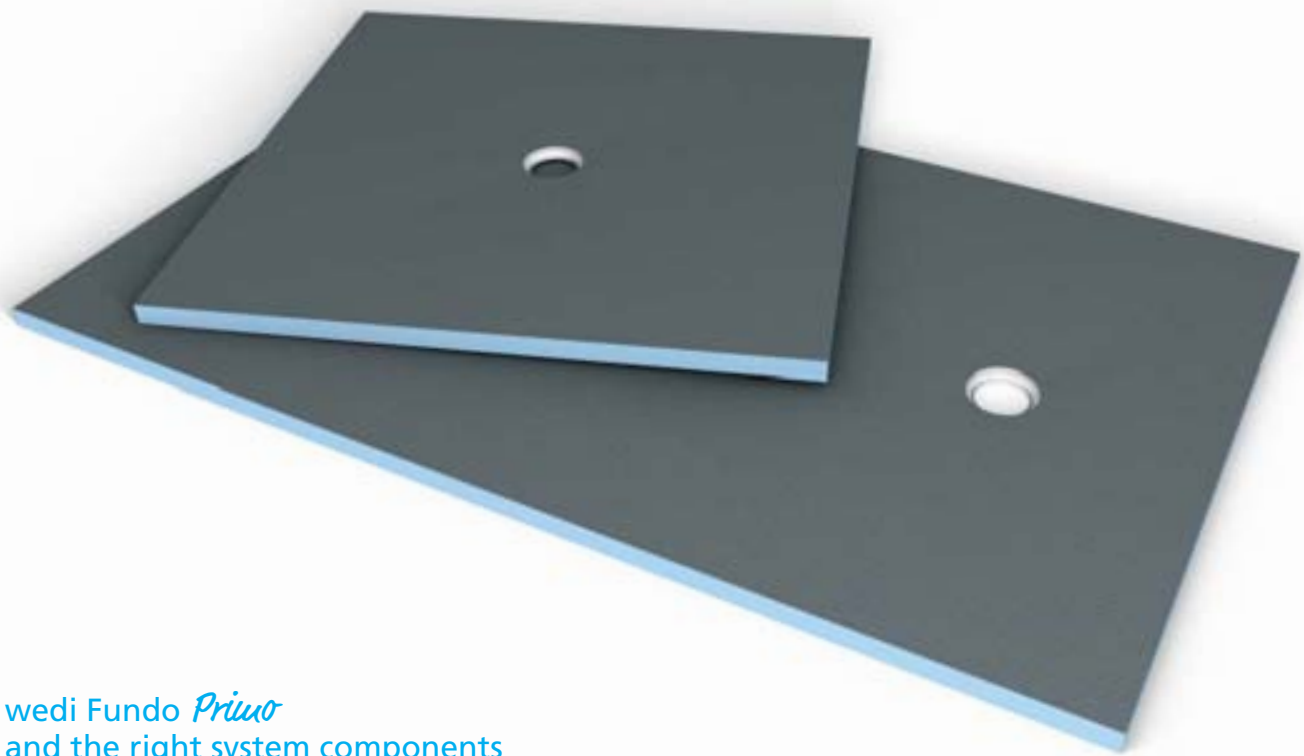


Huge variety of design,
function and format



Advantages for the user
save time and money





wedi Fundo *Primo* and the right system components

+ wedi Fundo drain

Thanks to the low installation height and waterproof security, the wedi drains are very well suited to new builds and renovations. There is a variety of different versions for vertical and horizontal designs.



+ wedi Fundo sealing set

The sealing set to create a waterproof connection between wedi building boards or wedi Fundo and other materials not belonging to the system, e.g. screed, plasterboard, etc.



+ wedi *Tools* joint reinforcement tape

Special (self-adhesive) fabric tape to fix and bridge the protruding edges of structural panels.

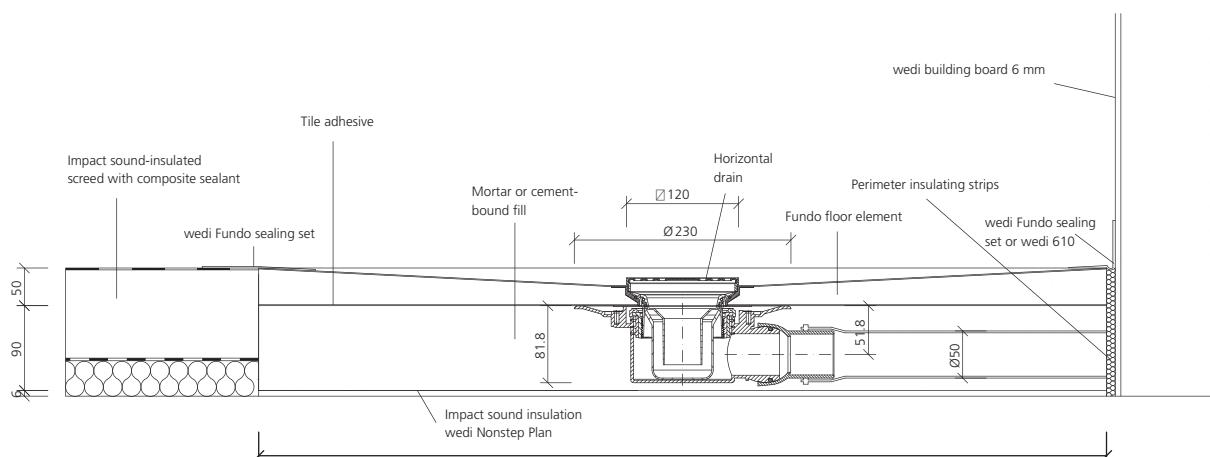


+ wedi 610

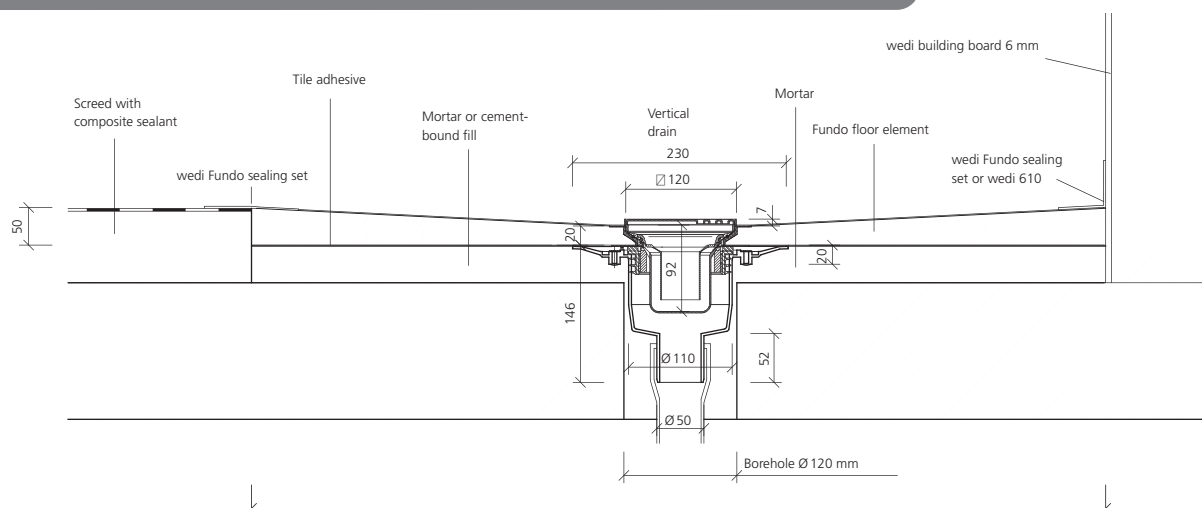
As a versatile single-component adhesive and sealant, wedi 610 is particularly well suited to creating a waterproof joint between wedi components. The combination of wedi building board and wedi 610 has an abP general appraisal certificate for the heavy-duty area.



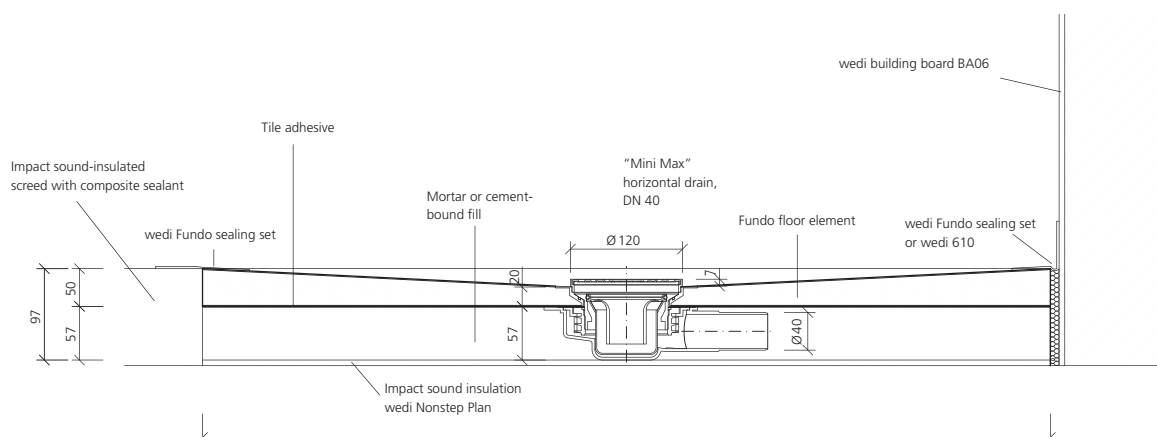
Fundo horizontal drain, DN 50, screed flooring



Fundo vertical drain, DN 50, screed flooring (also available with fire breakpoint and DN 70)



Fundo Mini Max drain, DN 40



i You will find further technical drawings in the relevant assembly instructions and in the "Creation of flush-to-floor showers" brochure.

Item numbers and designs

1st selection: Floor element

	Length × width × thickness	Packaging unit	Order no.
wedi Fundo Primo, square floor element, central drain	900 × 900 × 40 mm	10 units	07-37-35/170
wedi Fundo Primo, square floor element, central drain	1000 × 1000 × 40 mm	10 units	07-37-35/131
wedi Fundo Primo, square floor element, central drain	1200 × 1200 × 40 mm	10 units	07-37-35/171
wedi Fundo Primo, square floor element, central drain	1500 × 1500 × 40 mm	10 units	07-37-35/175
wedi Fundo Primo, square floor element, offset drain	900 × 900 × 40 mm	10 units	07-37-36/170
wedi Fundo Primo, square floor element, offset drain	1000 × 1000 × 40 mm	10 units	07-37-35/531
wedi Fundo Primo, square floor element, offset drain	1200 × 1200 × 40 mm	10 units	07-37-36/171
wedi Fundo Primo, square floor element, offset drain	1500 × 1500 × 40 mm	10 units	07-37-36/175
wedi Fundo Primo, rectangular floor element, central drain	900 × 750 × 40 mm	10 units	07-37-35/176
wedi Fundo Primo, rectangular floor element, central drain	1200 × 900 × 40 mm	10 units	07-37-35/174
wedi Fundo Primo, rectangular floor element, central drain	1400 × 900 × 40 mm	10 units	07-37-35/196
wedi Fundo Primo, rectangular floor element, central drain	1500 × 900 × 40 mm	10 units	07-37-36/120
wedi Fundo Primo, rectangular floor element, central drain	1800 × 900 × 40 mm	10 units	07-37-35/580
wedi Fundo Primo, rectangular floor element, central drain	1400 × 1000 × 40 mm	10 units	07-37-35/198
wedi Fundo Primo, rectangular floor element, central drain	1500 × 1000 × 40 mm	10 units	07-37-36/121
wedi Fundo Primo, rectangular floor element, offset drain	1200 × 900 × 40 mm	10 units	07-37-36/174
wedi Fundo Primo, rectangular floor element, offset drain	1800 × 900 × 40 mm	10 units	07-37-35/180

2nd selection: Drain

	Packaging unit	Order no.
wedi Fundo vertical drain, DN 50, Drainage capacity 1,00 l/s ; 60,0 l/min	1 unit	07-37-89/000
wedi Fundo vertical drain, DN 50, round, Drainage capacity 1,00 l/s ; 60,0 l/min	1 unit	07-37-72/000
wedi Fundo vertical drain, DN 50, with fire protection collar, Drainage capacity 1,00 l/s ; 60,0 l/min	1 unit	07-37-49/002
wedi Fundo vertical drain, DN 70, Drainage capacity 0,88 l/s ; 52,8 l/min	1 unit	07-37-89/070
wedi Fundo horizontal drain, DN 50, Drainage capacity 0,80 l/s ; 48,0 l/min	1 unit	07-37-90/000
wedi Fundo horizontal drain, DN 50, round, Drainage capacity 0,80 l/s ; 48,0 l/min	1 unit	07-37-73/001
wedi Fundo Mini Max drain, DN 40, extra-flat, Drainage capacity 0,54 l/s ; 32,4 l/min	1 unit	07-37-90/001

3rd selection: Sealant

	Quantity / length × width	Packaging unit	Order no.
Version 1 – Installation in screed; no wall/floor connection with wedi building board			
wedi Fundo sealing set		1 pail	07-37-96/000
wedi Tools, sealing tape, fleece-lined	50 m × 100 mm	1 roll	09-51-00/352
wedi Tools, sealing tape, fleece-lined	10 m × 120 mm	1 roll	09-51-10/311
wedi Tools, sealing tape, fleece-lined	50 m × 120 mm	1 roll	09-51-10/352
wedi Tools, inside corners, fleece laminated	120 × 120 mm	25 units	09-51-30/001
wedi Tools, outside corners, fleece laminated	115 × 115 mm	25 units	09-51-35/001
Version 2 – Installation on the floor; connection to wall/floor with wedi building board			
wedi 610, adhesive sealant	310 ml / 1 cartridge	20 units	07-69-02/002
wedi Tools, joint reinforcement tape	25 m × 125 mm	1 roll	09-52-20/053
wedi Tools, joint reinforcement tape, self-adhesive	25 m × 125 mm	1 roll	09-52-25/053



You can find countless expansion options for your shower or complete bathroom conversion in the wedi product range.



All installation instructions can be found using this QR code.





wedi Fundo *Riolito*

Flush-to-floor shower element with sophisticated linear drainage

This flush-to-floor shower element is captivating with its sophisticated linear drainage. With all Riolito designs, this is positioned to the side. The exact gradient required for this is already incorporated into the floor elements.



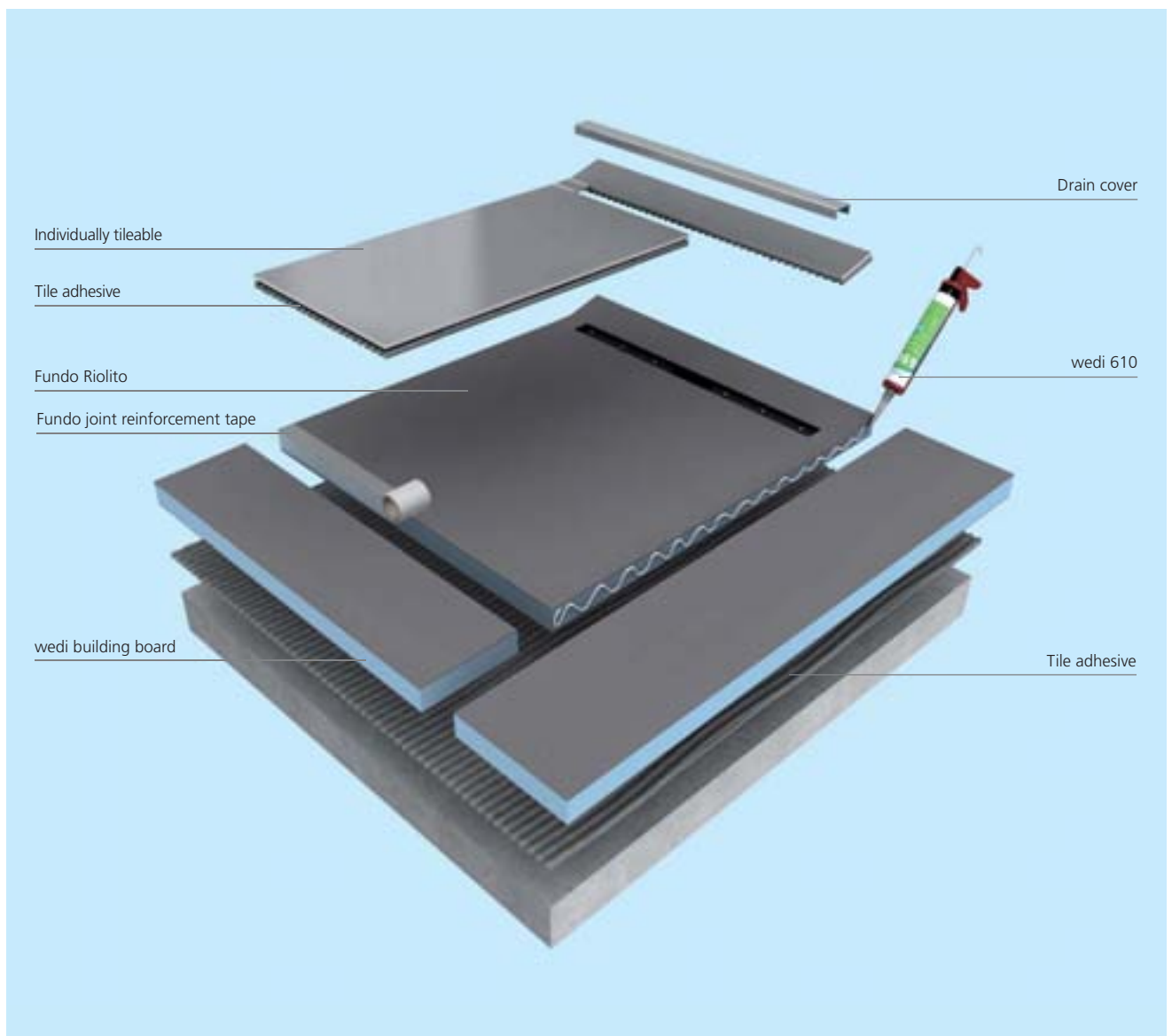
Leading solution for accessible bathrooms



No risk when fitting due to high degree of system reliability



Simpler and quicker installation





wedi Fundo *Riolito* and the right system component

+ wedi 610

As a versatile single-component adhesive and sealant, wedi 610 is particularly well suited to creating a waterproof joint between wedi components. The combination of wedi building board and wedi 610 has an abP general appraisal certificate for the heavy-duty area.



+ wedi Fundo drain

Thanks to the low installation height and waterproof security, the wedi drains are very well suited to new builds and renovations. There is a variety of different versions for vertical and horizontal designs.



+ wedi Fundo sealing set

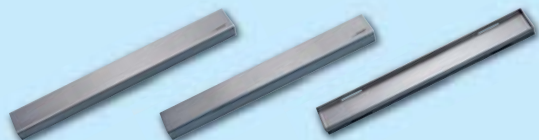
The sealing set to create a waterproof connection between wedi building boards or wedi Fundo and other materials not belonging to the system, e.g. screed, plasterboard, etc.



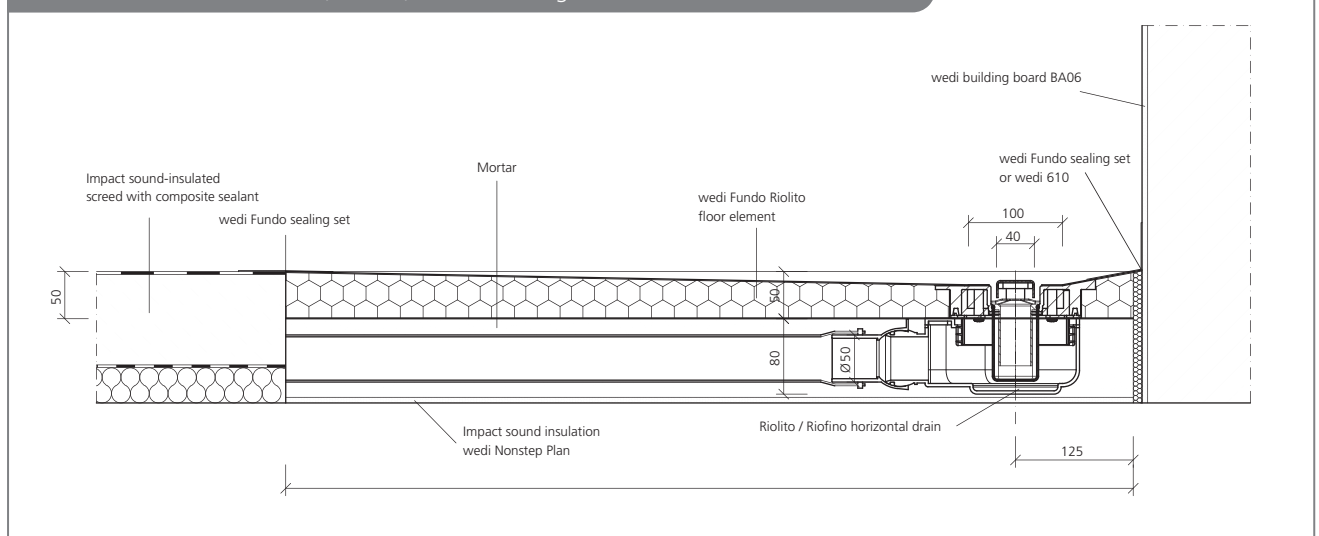
+ wedi Fundo *Riolito* drain covers

The high-quality covers made of brushed stainless steel complete the design demand of the wedi Fundo Riolito floor elements.

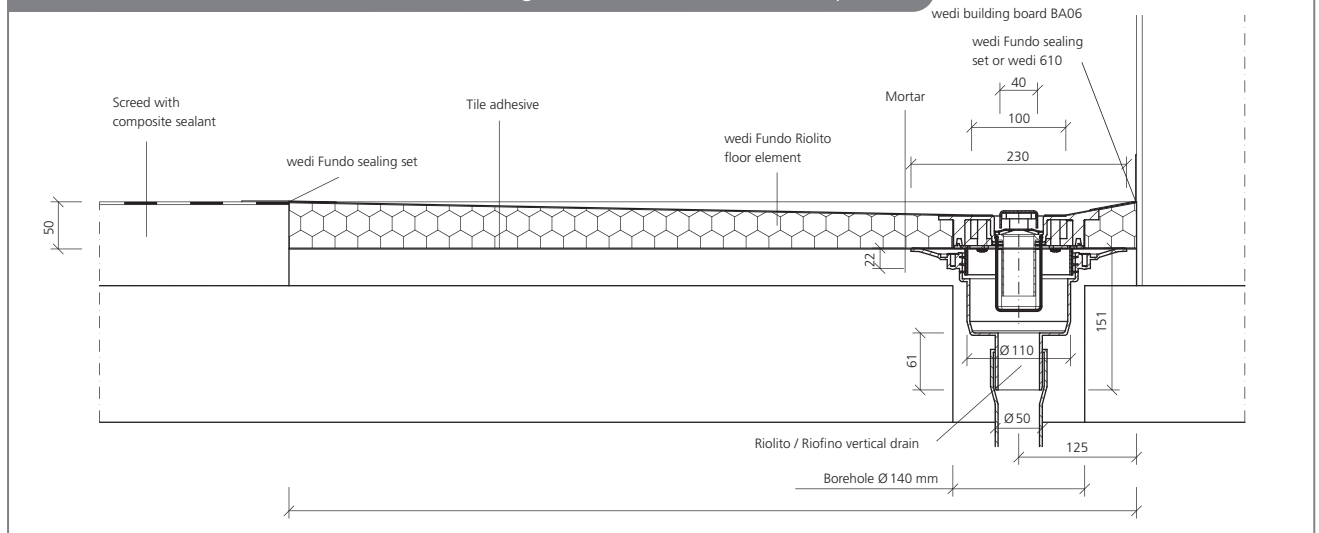
Design versions: standard, exclusive and tileable



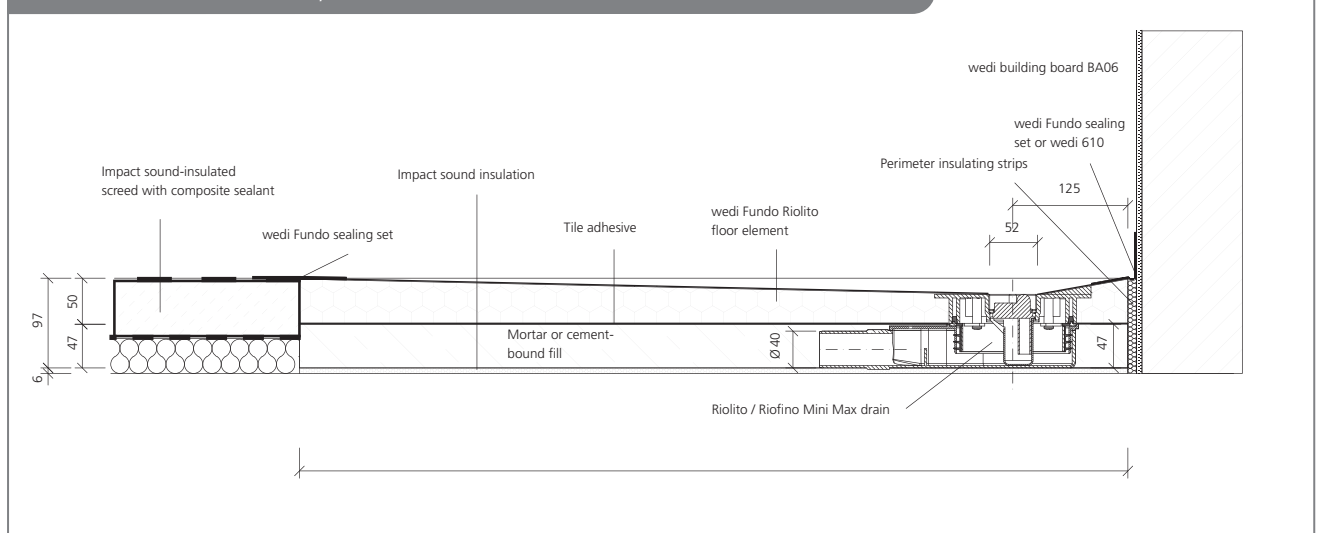
Fundo Riolito horizontal drain, DN 50, screed flooring



Fundo Riolito vertical drain, DN 50, screed flooring (also available with fire breakpoint)



Fundo Riolito Mini Max drain, DN 40



i You will find further technical drawings in the relevant assembly instructions and in the "Creation of flush-to-floor showers" brochure.

Item numbers and designs

1st selection: Floor element

	Length x width x thickness	Gutter length	Order no.
wedi Fundo Riolito, floor element, with laterally integrated channel drain, rectangular	900 x 800 x 50 mm	700 mm	07-37-34/357
wedi Fundo Riolito, floor element, with laterally integrated channel drain, rectangular	1200 x 800 x 50 mm	700 mm	07-37-34/351
wedi Fundo Riolito, floor element, with laterally integrated channel drain, rectangular	1200 x 900 x 50 mm	800 mm	07-37-34/356
wedi Fundo Riolito, floor element, with laterally integrated channel drain, rectangular	1800 x 900 x 60 mm	800 mm	07-37-34/358
wedi Fundo Riolito, floor element, with laterally integrated channel drain, rectangular	900 x 1000 x 50 mm	900 mm	07-37-34/350
wedi Fundo Riolito, floor element, with laterally integrated channel drain, rectangular	1200 x 1000 x 50 mm	900 mm	07-37-34/352
wedi Fundo Riolito, floor element, with laterally integrated channel drain, rectangular	900 x 1200 x 50 mm	1100 mm	07-37-34/353
wedi Fundo Riolito, floor element, with laterally integrated channel drain, square	900 x 900 x 50 mm	800 mm	07-37-34/354
wedi Fundo Riolito, floor element, with laterally integrated channel drain, square	1200 x 1200 x 50 mm	1100 mm	07-37-34/355

2nd selection: Drain

	Packaging unit	Order no.
wedi Fundo Riolito / Riofino, vertical drain, DN 50, Drainage capacity 1,12 l/s ; 67,2 l/min	1 unit	07-37-89/013
wedi Fundo Riolito / Riofino, vertical drain, DN 50 with fire breakpoint, Drainage capacity 1,12 l/s ; 67,2 l/min	1 unit	07-37-89/012
wedi Fundo Riolito / Riofino, horizontal drain, DN 50, Drainage capacity 0,80 l/s ; 48,0 l/min	1 unit	07-37-90/004
wedi Fundo Riolito / Riofino Mini Max, drain, DN 40, extra-flat, Drainage capacity 0,40 l/s ; 24 l/min	1 unit	07-37-90/006

3rd selection: Sealant

	Quantity / length x width	Packaging unit	Order no.
Version 1 – Installation in screed; no wall/floor connection with wedi building board			
wedi Fundo sealing set		1 pail	07-37-96/000
wedi Tools, sealing tape, fleece-lined	50 m x 100 mm	1 roll	09-51-00/352
wedi Tools, sealing tape, fleece-lined	10 m x 120 mm	1 roll	09-51-10/311
wedi Tools, sealing tape, fleece-lined	50 m x 120 mm	1 roll	09-51-10/352
wedi Tools, inside corners, fleece laminated	120 x 120 mm	25 units	09-51-30/001
wedi Tools, outside corners, fleece laminated	115 x 115 mm	25 units	09-51-35/001
Version 2 – Installation on the floor; connection to wall/floor with wedi building board			
wedi 610, adhesive sealant	310 ml / 1 cartridge	20 units	07-69-02/002
wedi Tools, joint reinforcement tape	25 m x 125 mm	1 roll	09-52-20/053
wedi Tools, joint reinforcement tape, self-adhesive	25 m x 125 mm	1 roll	09-52-25/053

4th selection: Drain covers

	Length x width x thickness	Packaging unit	Order no.
wedi Fundo Riolito standard, drain cover, 1.5 mm thick stainless steel, brushed	700 x 40 x 18 mm	1 unit	67-67-97/012
wedi Fundo Riolito standard, drain cover, 1.5 mm thick stainless steel, brushed	800 x 40 x 18 mm	1 unit	67-67-97/011
wedi Fundo Riolito standard, drain cover, 1.5 mm thick stainless steel, brushed	900 x 40 x 18 mm	1 unit	67-67-97/010
wedi Fundo Riolito standard, drain cover, 1.5 mm thick stainless steel, brushed	1100 x 40 x 18 mm	1 unit	67-67-97/009
wedi Fundo Riolito exclusive, drain cover, solid stainless steel in 1.5 mm thickness, brushed	700 x 40 x 21 mm	1 unit	67-67-97/005
wedi Fundo Riolito exclusive, drain cover, solid stainless steel in 1.5 mm thickness, brushed	800 x 40 x 21 mm	1 unit	67-67-97/006
wedi Fundo Riolito exclusive, drain cover, solid stainless steel in 1.5 mm thickness, brushed	900 x 40 x 21 mm	1 unit	67-67-97/007
wedi Fundo Riolito exclusive, drain cover, solid stainless steel in 1.5 mm thickness, brushed	1100 x 40 x 21 mm	1 unit	67-67-97/008
wedi Fundo Riolito tileable, drain cover, stainless steel	700 x 40 x 18 mm	1 unit	67-67-97/015
wedi Fundo Riolito tileable, drain cover, stainless steel	800 x 40 x 18 mm	1 unit	67-67-97/016
wedi Fundo Riolito tileable, drain cover, stainless steel	900 x 40 x 18 mm	1 unit	67-67-97/017
wedi Fundo Riolito tileable, drain cover, stainless steel	1100 x 40 x 18 mm	1 unit	67-67-97/018

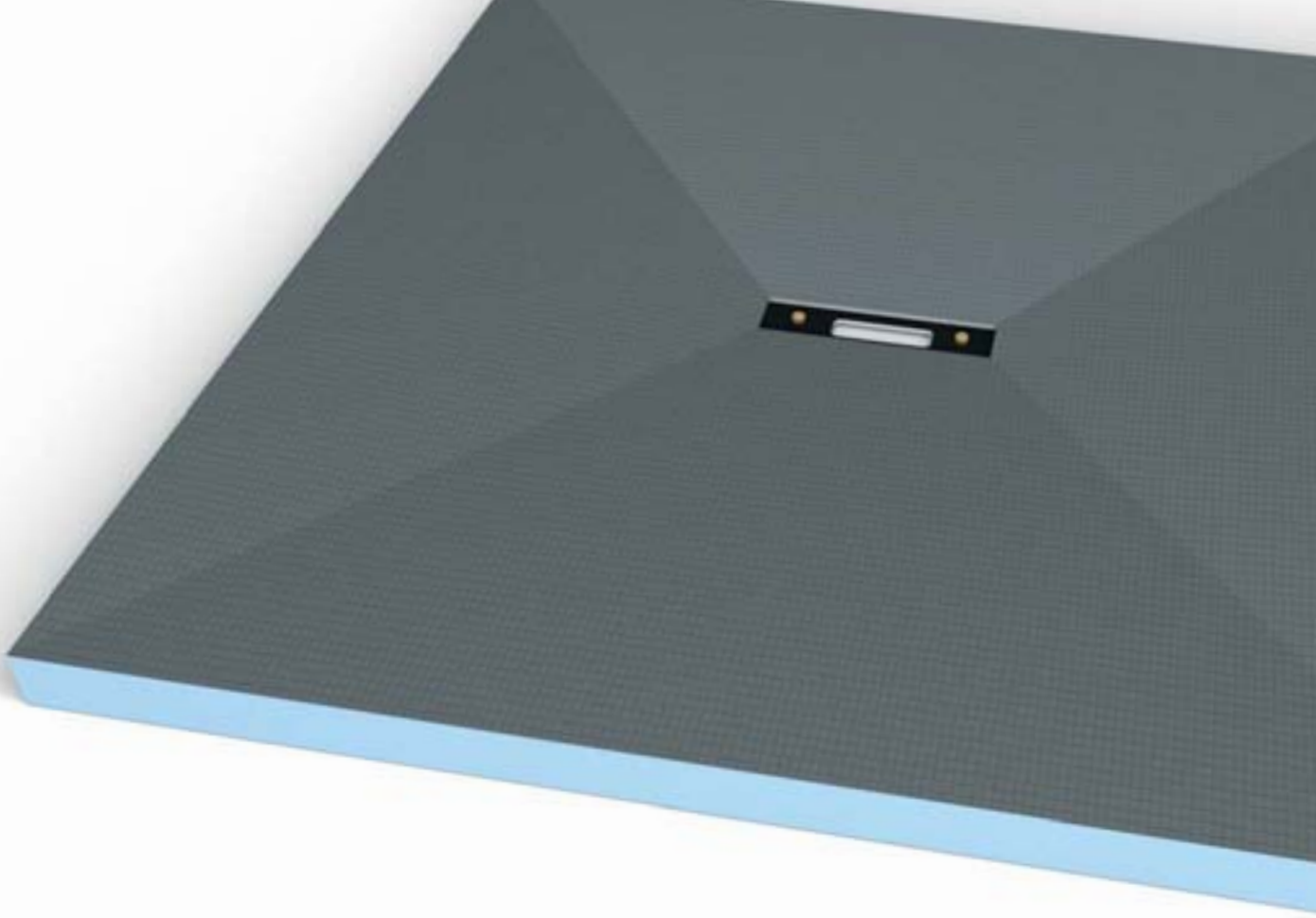


You can find countless expansion options for your shower or complete bathroom conversion in the wedi product range.



All installation instructions can be found using this QR code.





wedi Fundo *Riofino*

Flush-to-floor shower element with
central linear drainage

A different kind of linear drainage – streamlined and centred. This is the wedi Fundo Riofino floor element. Sophisticated in its finish, extraordinary in design and quick and safe in its drainage, it impresses completely.



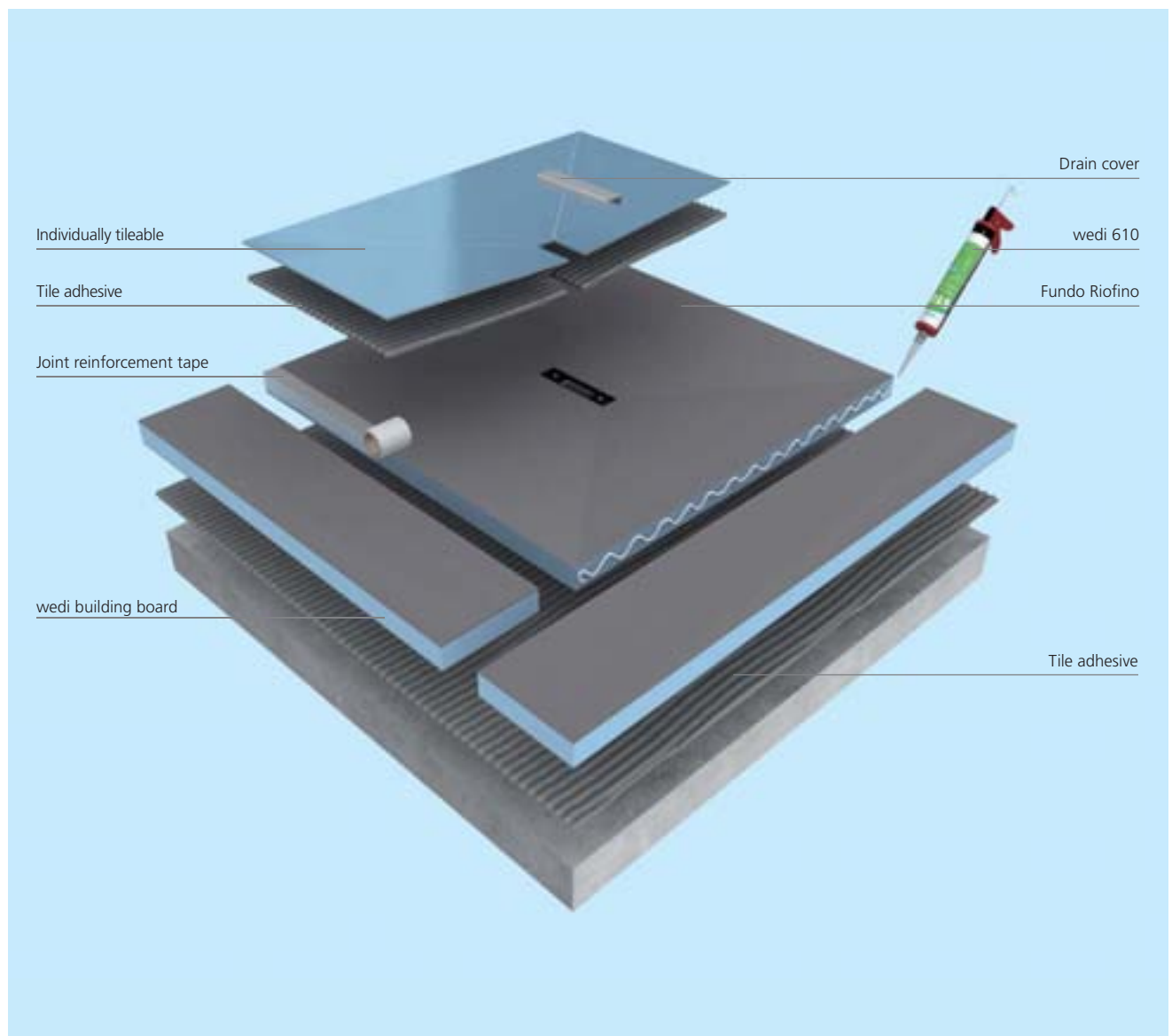
Can be individually adapted without
forfeiting your guarantee

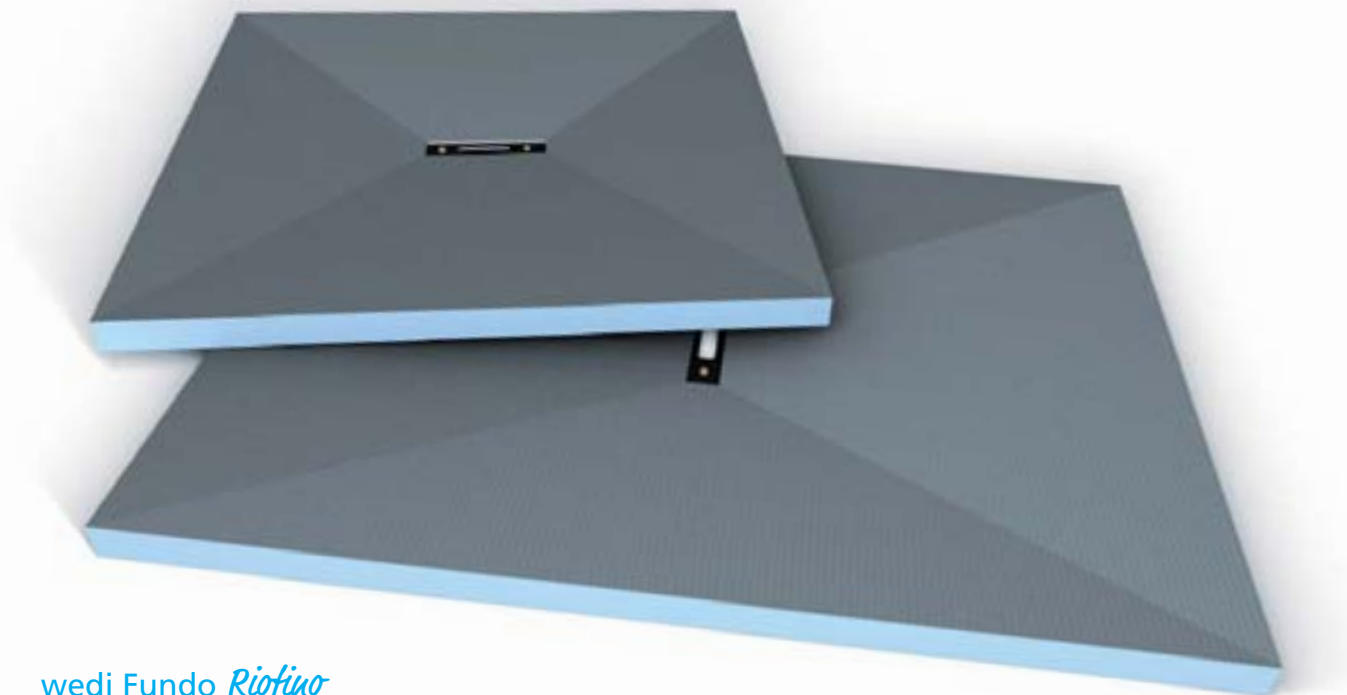


Checked and licensed with abP
general appraisal certificate



Very low
weight





wedi Fundo *Riofino* and the right system components

+ wedi Fundo drain

Thanks to the low installation height and waterproof security, the wedi drains are very well suited to new builds and renovations. There is a variety of different versions for vertical and horizontal designs.



+ wedi Fundo sealing set

The sealing set to create a waterproof connection between wedi building boards or wedi Fundo and other materials not belonging to the system, e.g. screed, plasterboard, etc.



+ wedi *Tools* joint reinforcement tape

Special (self-adhesive) fabric tape to fix and bridge the protruding edges of building boards.



+ wedi 610

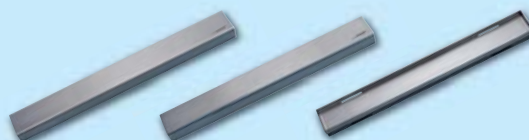
As a versatile single-component adhesive and sealant, wedi 610 is particularly well suited to creating a waterproof joint between wedi components. The combination of wedi building board and wedi 610 has an abP general appraisal certificate for the heavy-duty area.



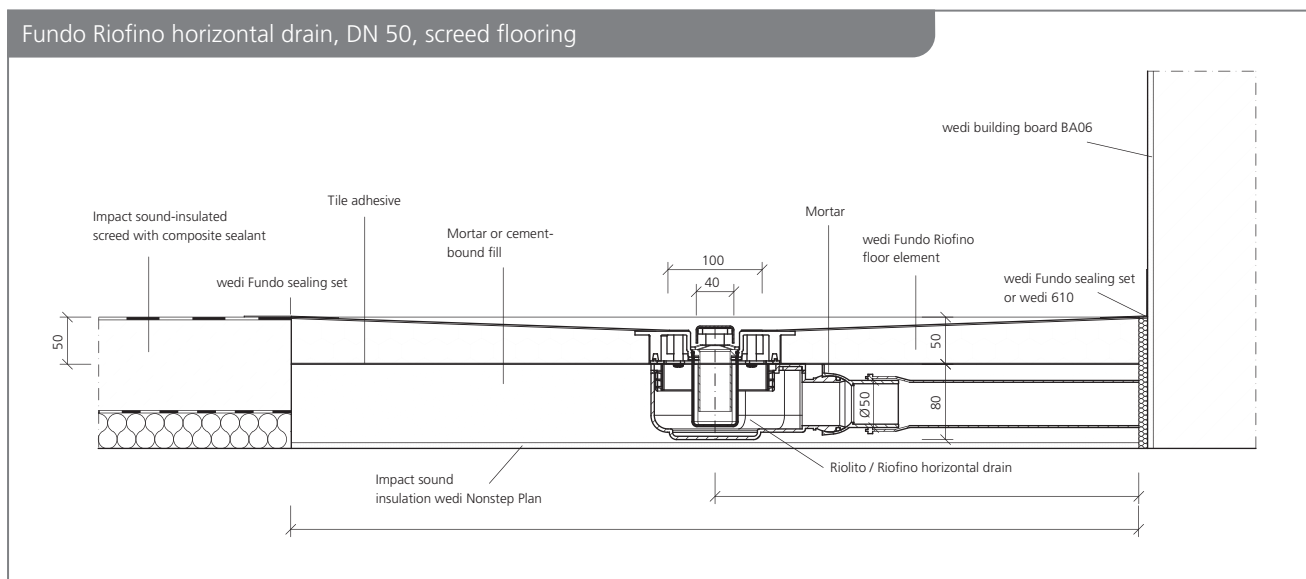
+ wedi Fundo *Riofino* drain covers

The high-quality covers made of brushed stainless steel complete the design demand of the wedi Fundo Riofino floor elements.

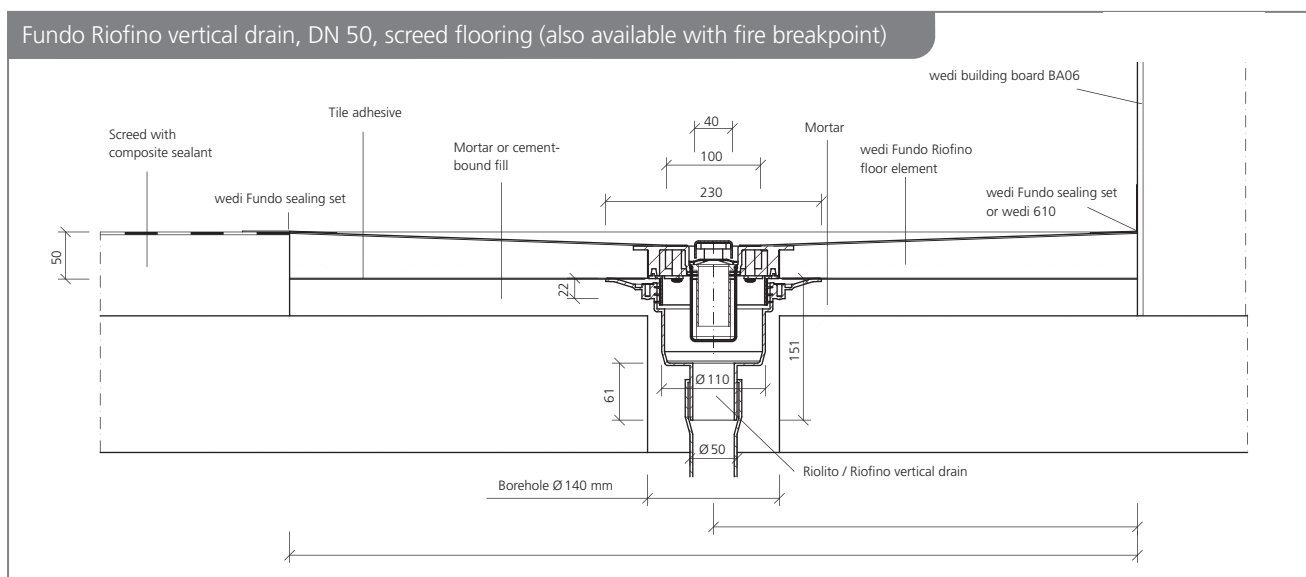
Design versions: standard, exclusive and tileable



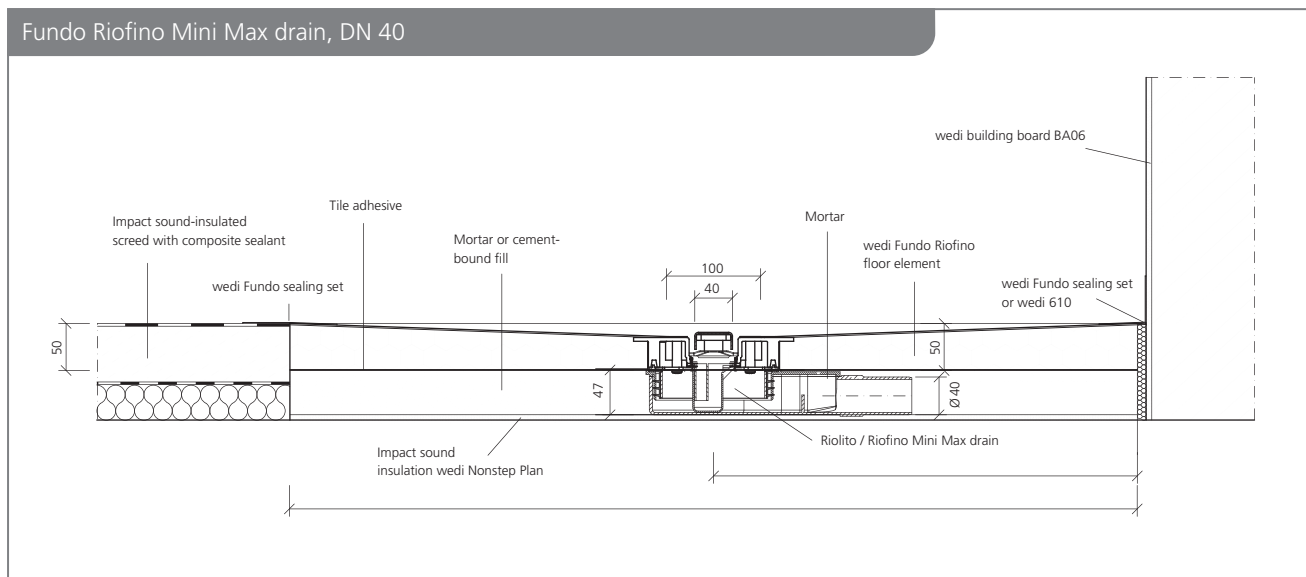
Fundo Riofino horizontal drain, DN 50, screed flooring



Fundo Riofino vertical drain, DN 50, screed flooring (also available with fire breakpoint)



Fundo Riofino Mini Max drain, DN 40



i You will find further technical drawings in the relevant assembly instructions and in the "Creation of flush-to-floor showers" brochure.

Item number and designs

1st selection: Floor element

	Length x width x thickness	Gutter length	Order no.
wedi Fundo Riofino, floor element with central channel drain, square	900 x 900 x 50 mm	300 mm	07-37-34/170
wedi Fundo Riofino, floor element with central channel drain, square	1000 x 1000 x 50 mm	300 mm	07-37-34/131
wedi Fundo Riofino, floor element with central channel drain, square	1200 x 1200 x 50 mm	300 mm	07-37-34/171
wedi Fundo Riofino, floor element with central channel drain, rectangular	1200 x 900 x 50 mm	300 mm	07-37-34/174
wedi Fundo Riofino, floor element with central channel drain, rectangular	1800 x 900 x 50 mm	300 mm	07-37-34/580

2nd selection: Drain

	Packaging unit	Order no.
wedi Fundo Riolito / Riofino, vertical drain, DN 50, Drainage capacity 1,12 l/s ; 67,2 l/min	1 unit	07-37-89/013
wedi Fundo Riolito / Riofino, vertical drain, DN 50 with fire protection collar, Drainage capacity 1,12 l/s ; 67,2 l/min	1 unit	07-37-89/012
wedi Fundo Riolito / Riofino, horizontal drain, DN 50, Drainage capacity 0,80 l/s ; 48,0 l/min	1 unit	07-37-90/004
wedi Fundo Riolito / Riofino Mini Max, drain, DN 40, extra-flat, Drainage capacity 0,40 l/s ; 24 l/min	1 unit	07-37-90/006

3rd selection: Sealant

	Quantity / Length x width	Packaging unit	Order no.
Version 1 – Installation in screed; no wall/floor connection with wedi building board			
wedi Fundo sealing set		1 pail	07-37-96/000
wedi Tools, sealing tape, fleece-lined	50 m x 100 mm	1 roll	09-51-00/352
wedi Tools, sealing tape, fleece-lined	10 m x 120 mm	1 roll	09-51-10/311
wedi Tools, sealing tape, fleece-lined	50 m x 120 mm	1 roll	09-51-10/352
wedi Tools, inside corners, fleece laminated	120 x 120 mm	25 units	09-51-30/001
wedi Tools, outside corners, fleece laminated	115 x 115 mm	25 units	09-51-35/001
Version 2 – Installation on the floor; connection to wall/floor with wedi building board			
wedi 610, adhesive sealant	310 ml / 1 cartridge	20 units	07-69-02/002
wedi Tools, joint reinforcement tape	25 m x 125 mm	1 roll	09-52-20/053
wedi Tools, joint reinforcement tape, self-adhesive	25 m x 125 mm	1 roll	09-52-25/053

4th selection: Drain covers

	Length x width x thickness	Packaging unit	Order no.
wedi Fundo Riofino standard, drain cover, 1.5 mm thick stainless steel, brushed	300 x 40 x 18 mm	1 unit	67-67-97/013
wedi Fundo Riofino exclusive, drain cover, solid stainless steel in 1.5 mm thickness, with additional 3mm stainless steel plate, brushed	300 x 40 x 21 mm	1 unit	67-67-97/004
wedi Fundo Riofino tileable, drain cover, stainless steel	300 x 40 x 18 mm	1 unit	67-67-97/014



You can find countless expansion options for your shower or complete bathroom conversion in the wedi product range.



All installation instructions can be found using this QR code.





A total installation height
of just 70 mm

wedi Fundo *Plano Linea*

The thinnest complete linear system

wedi's innovation of the year is – at the same time – the thinnest complete system for floor-level showers featuring linear drainage. With the drain technology, which was already integrated in the factory, the system measures a mere 70 mm and is a special wedi highlight in bathroom renovations. Positioned very close to the wall, and featuring a short or long channel as an option, the drain gives a high-quality impression from a visual perspective and also frees up additional space for pure shower enjoyment.



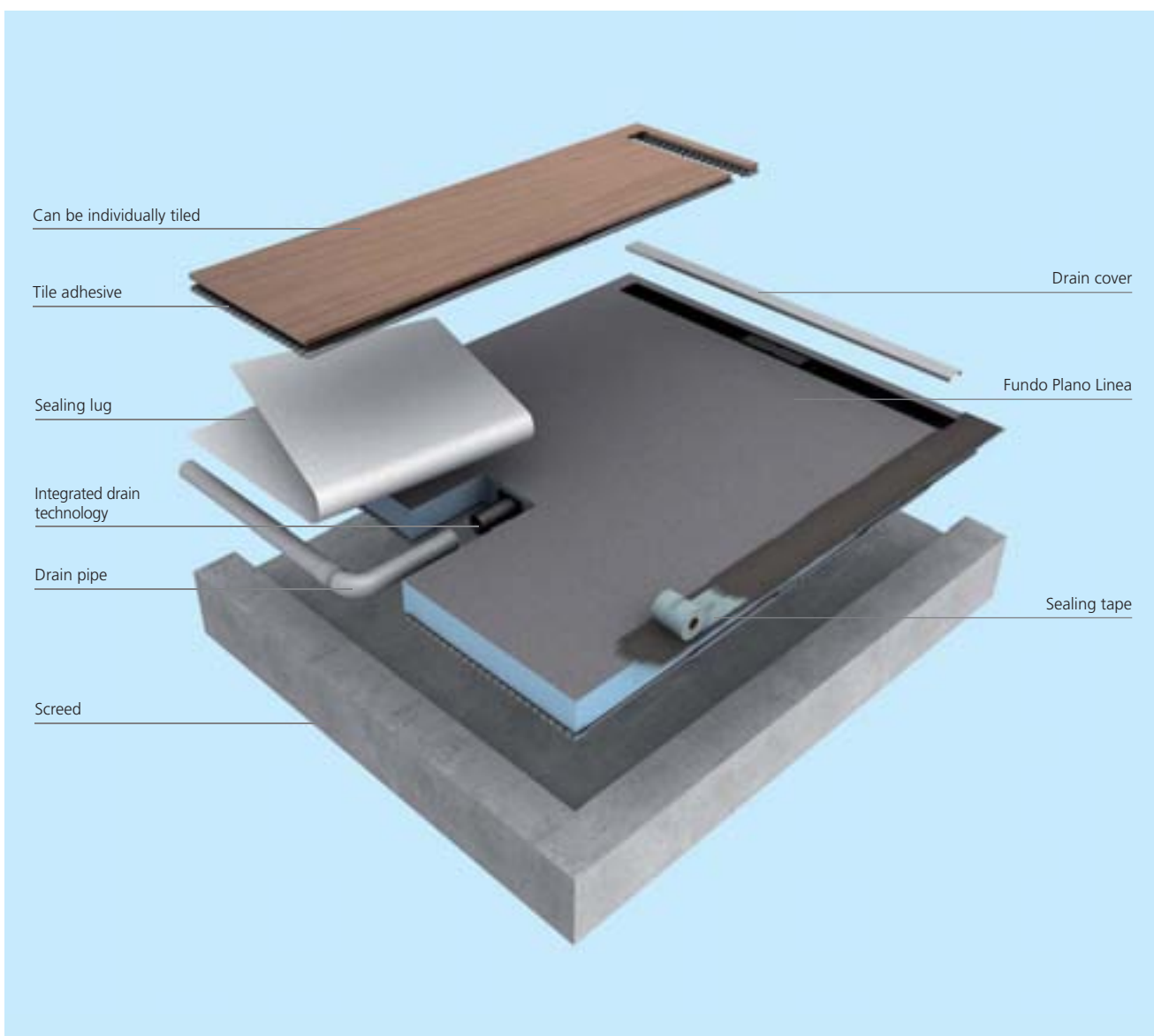
Extremely flat: a total installation height of just 70 mm

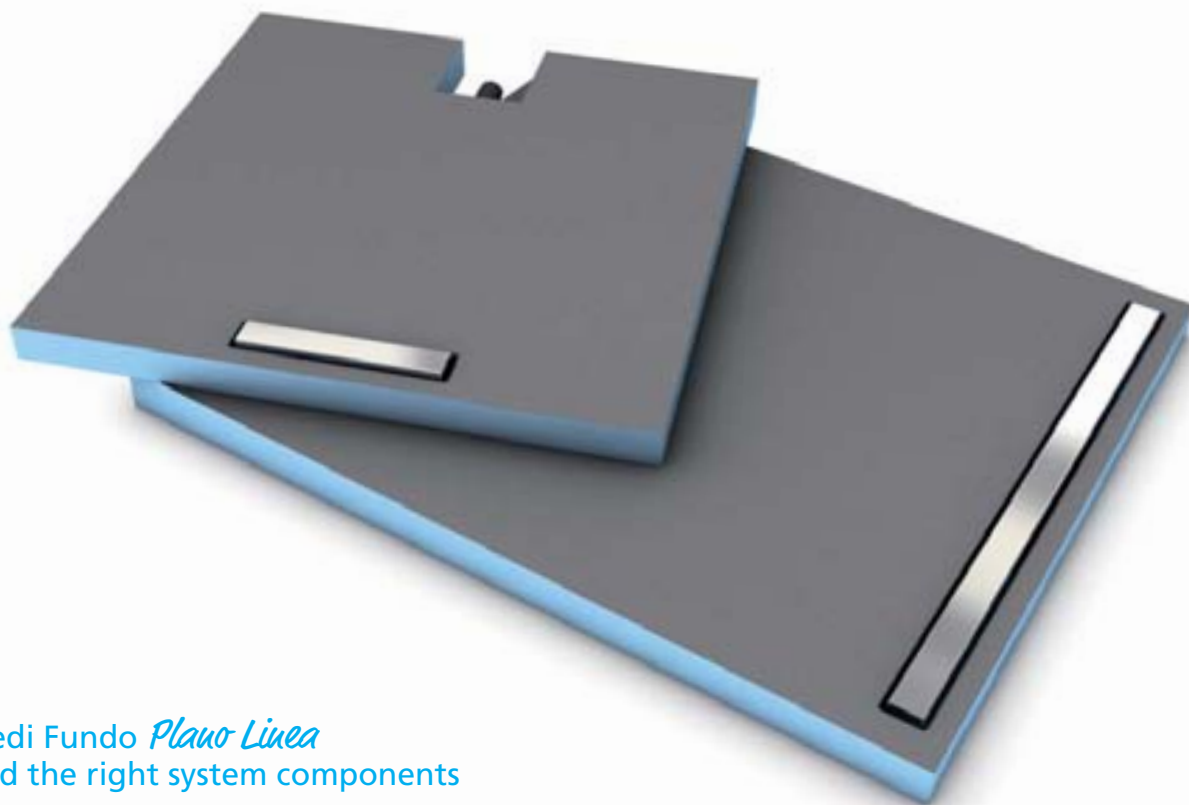


Complete system incl. integrated drain technology



Line drainage especially close to the wall





wedi Fundo *Plano Linea* and the right system components

+ wedi 610

As a versatile single-component adhesive and sealant, wedi 610 is particularly well suited to creating a waterproof joint between wedi components. The combination of wedi building board and wedi 610 has an abP general appraisal certificate for the heavy-duty area.



+ wedi Fundo sealing set

The sealing set to create a waterproof connection between wedi building boards or wedi Fundo and other materials not belonging to the system, e.g. screed, plasterboard, etc.



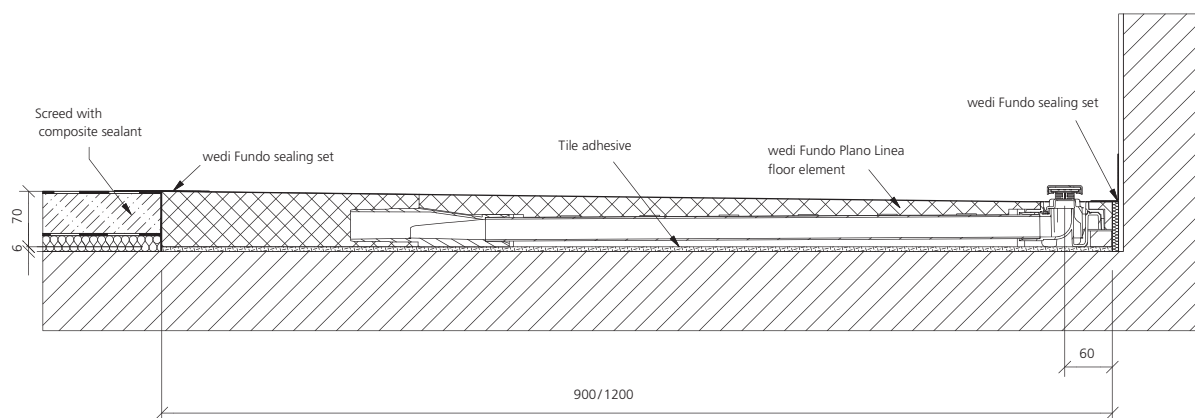
Scope of delivery:

wedi Fundo Plano Linea already has a DN 40 horizontal drain permanently integrated into the floor element. The scope of delivery also includes a height adjustable cover in V₂A brushed stainless steel and a large sealing pad.

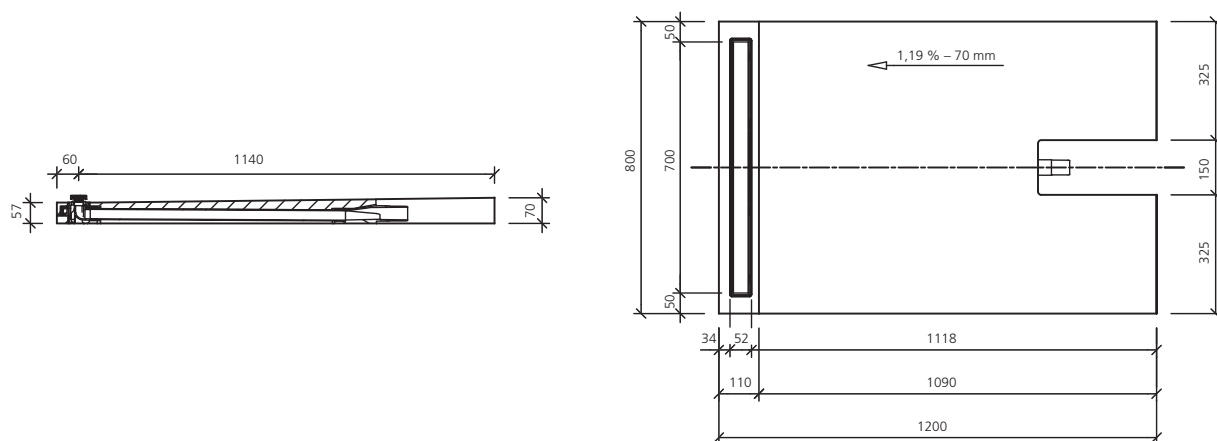


Drain versions Special solutions

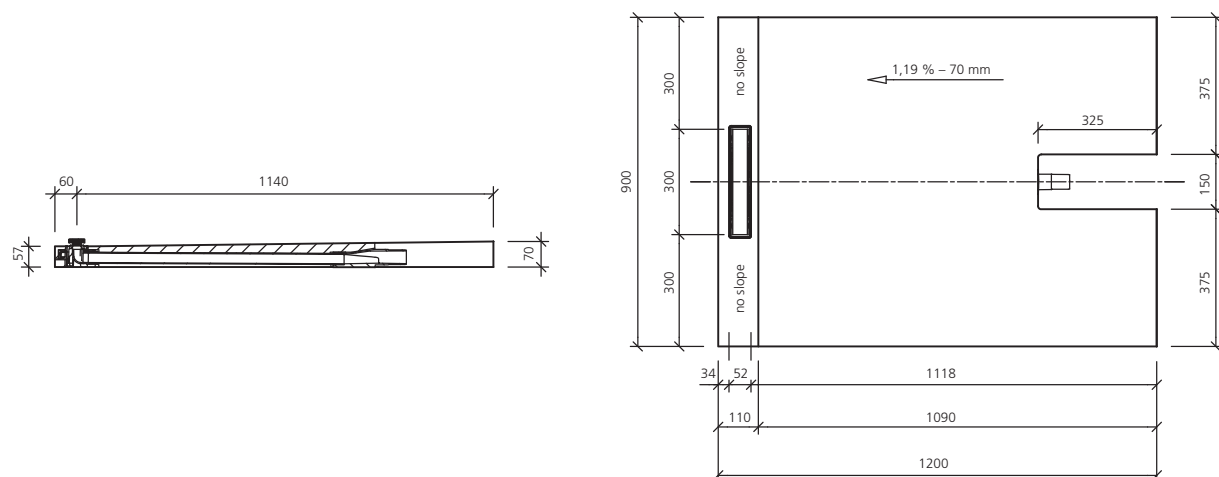
Fundo Plano Linea, integrated horizontal drain, DN 40, screed flooring



Fundo Plano Linea, Linea, floor element with channel



Fundo Plano Linea, floor element with short channel



i You will find further technical drawings in the relevant assembly instructions and in the "Creation of flush-to-floor showers" brochure.

Item number and designs

1st selection: Floor element

	Length x width x thickness	Gutter length	Order no.
wedi Fundo Plano Linea, floor element with channel and fully integrated drain technology, rectangular	1200 x 800 x 70 mm	700 mm	07-37-36/600
wedi Fundo Plano Linea, floor element with channel and fully integrated drain technology, rectangular	1200 x 900 x 70 mm	800 mm	07-37-36/601
wedi Fundo Plano Linea, floor element with short channel and fully integrated drain technology, rectangular	1200 x 900 x 70 mm	300 mm	07-37-36/607
wedi Fundo Plano Linea, floor element with channel and fully integrated drain technology, rectangular	1200 x 1000 x 70 mm	900 mm	07-37-36/602
wedi Fundo Plano Linea, floor element with channel and fully integrated drain technology, square	900 x 900 x 70 mm	800 mm	07-37-36/603
wedi Fundo Plano Linea, floor element with short channel and fully integrated drain technology, square	900 x 900 x 70 mm	300 mm	07-37-36/608

2nd selection: Sealant

	Quantity / Length x width	Packaging unit	Order no.
Version 1 – Installation in screed; no wall/floor connection with wedi building board			
wedi Fundo sealing set		1 pail	07-37-96/000
wedi Tools, sealing tape, fleece-lined	50 m x 100 mm	1 roll	09-51-00/352
wedi Tools, sealing tape, fleece-lined	10 m x 120 mm	1 roll	09-51-10/311
wedi Tools, sealing tape, fleece-lined	50 m x 120 mm	1 roll	09-51-10/352
wedi Tools, inside corners, fleece laminated	120 x 120 mm	25 units	09-51-30/001
wedi Tools, outside corners, fleece laminated	115 x 115 mm	25 units	09-51-35/001
Version 2 – Installation on the floor; connection to wall/floor with wedi building board			
wedi 610, adhesive sealant	310 ml / 1 cartridge	20 units	07-69-02/002
wedi Tools, joint reinforcement tape	25 m x 125 mm	1 roll	09-52-20/053
wedi Tools, joint reinforcement tape, self-adhesive	25 m x 125 mm	1 roll	09-52-25/053

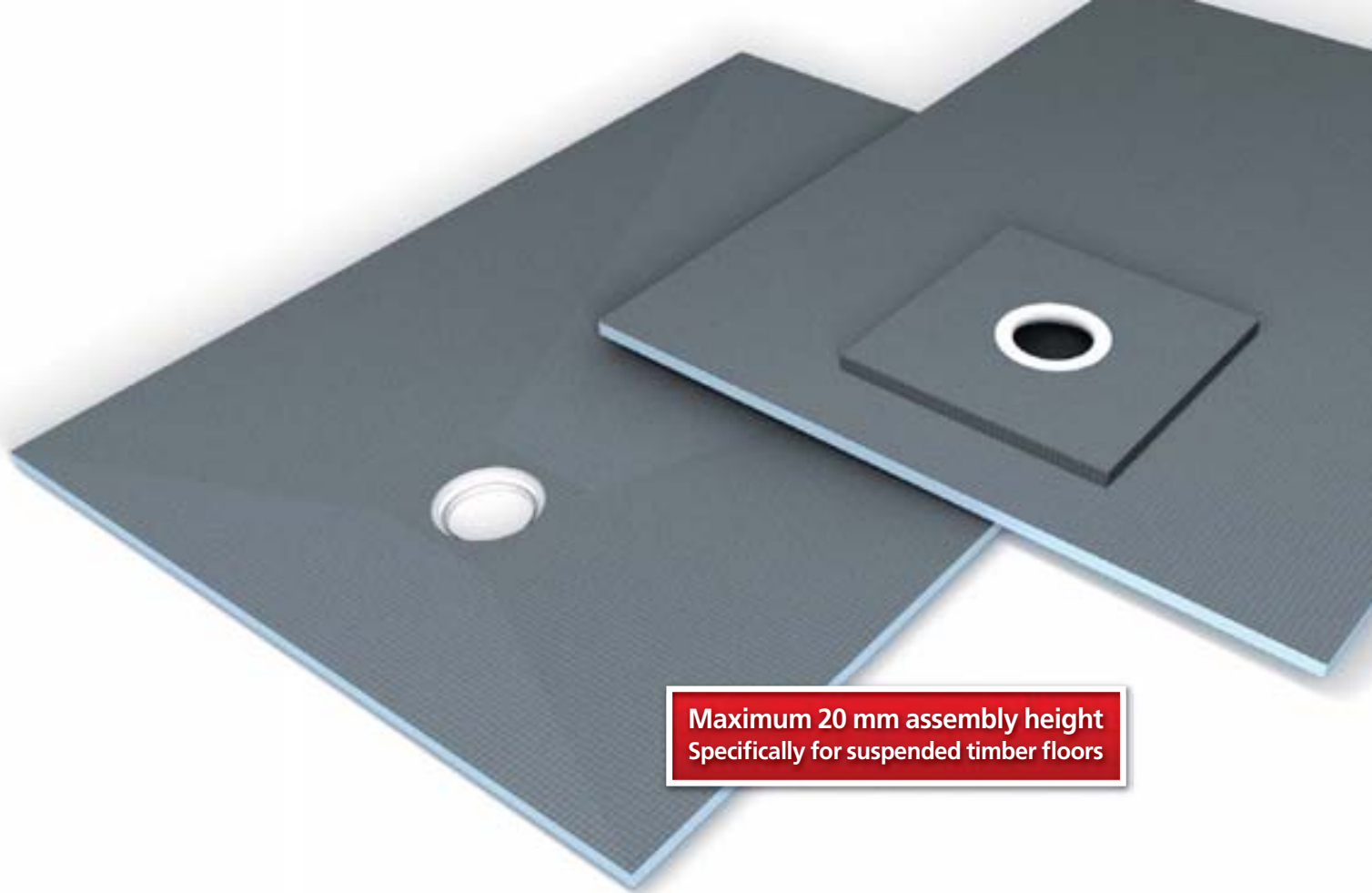


You can find countless expansion options for your shower or complete bathroom conversion in the wedi product range.



All installation instructions can be found using this QR code.





Maximum 20 mm assembly height
Specifically for suspended timber floors

wedi Fundo *Liquo*

Flush-to-floor shower element for timber beam floors

The flush-to-floor shower element, which is just 20 mm thick on the outer edge, has been developed especially for use in old and new buildings with timber beam floors. In comparison to conventional shower elements, the Fundo Ligno is adapted to the wooden layer of the floor, meaning it can be integrated wonderfully into this – without creating further height and without any laborious levelling measures.



Especially for timber
beam floors



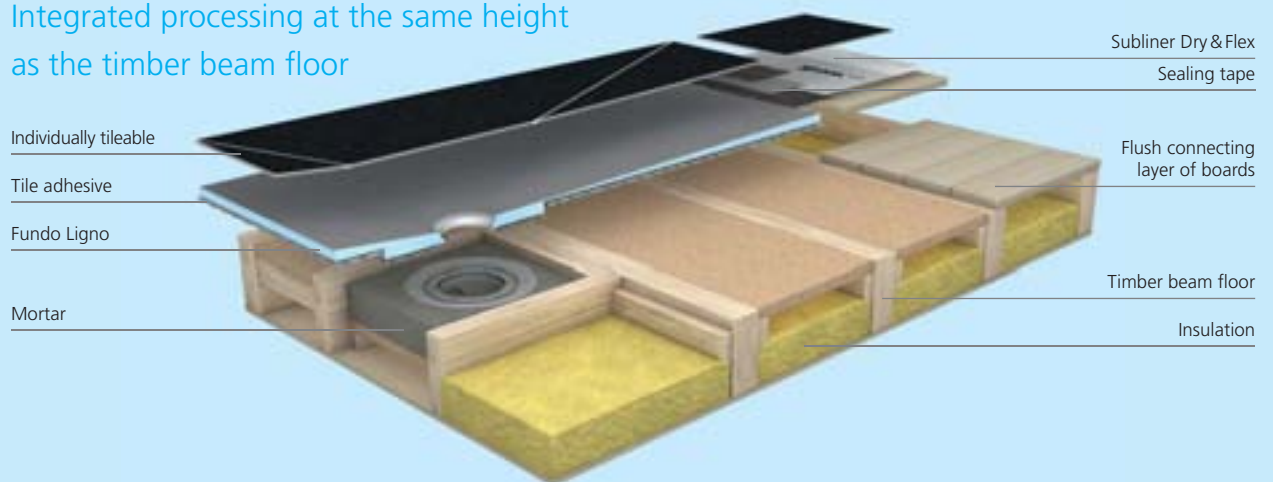
Decoupling
effect



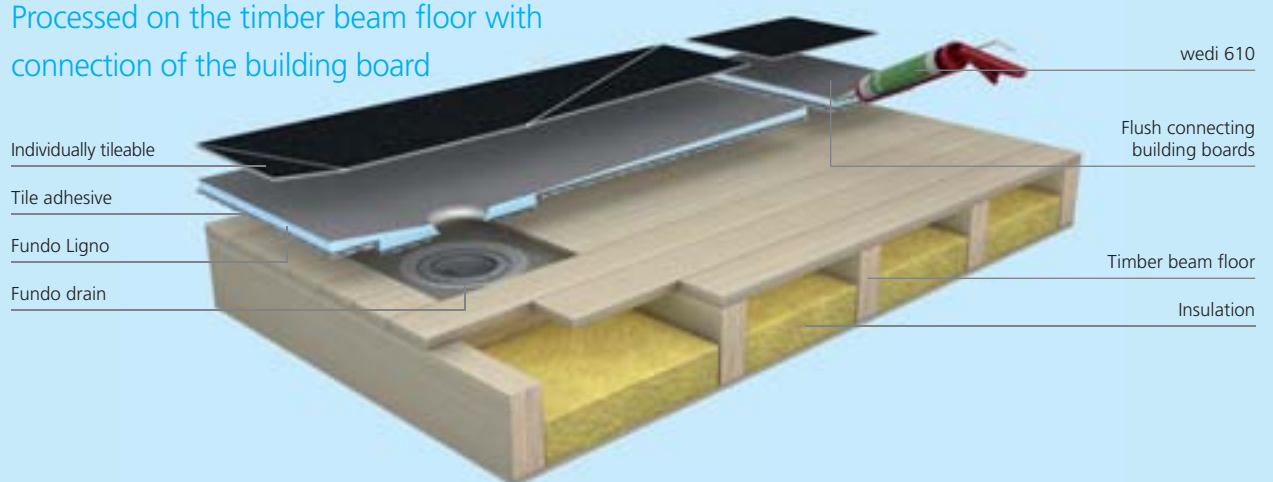
Can be combined with
all Fundo drains

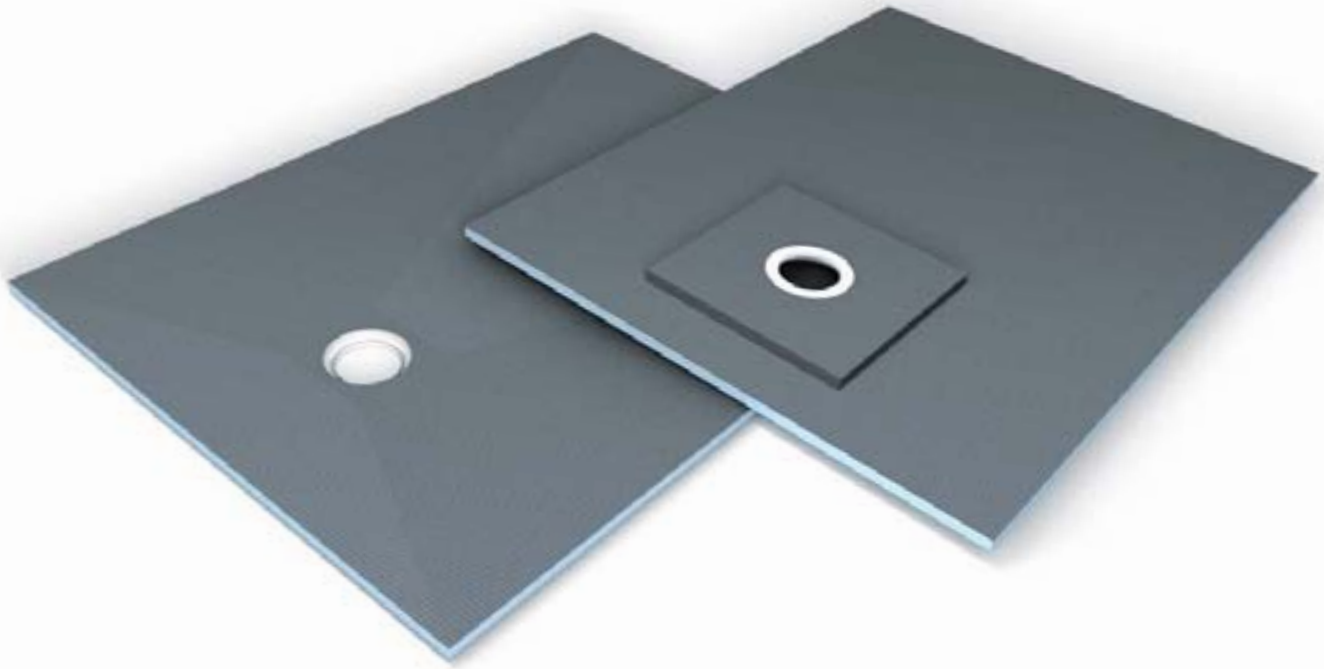


Integrated processing at the same height as the timber beam floor



Processed on the timber beam floor with connection of the building board





wedi Fundo *Ligo* and the right system components

+ wedi 610

As a versatile single-component adhesive and sealant, wedi 610 is particularly well suited to creating a waterproof joint between wedi components. The combination of wedi building board and wedi 610 has an abP general appraisal certificate for the heavy-duty area.



+ wedi *Tools* joint reinforcement tape

Special (self-adhesive) fabric tape to fix and bridge the protruding edges of building boards.



+ wedi Fundo sealing set

The sealing set to create a waterproof connection between wedi building boards or wedi Fundo and other materials not belonging to the system, e.g. screed, plasterboard, etc.



+ wedi *Subliner Dry & Flex*

Flexible, crack-bridging sealant and decoupling roll made of ultra tear-resistant polyethylene foil for indoor and outdoor walls and floors. A0 and B0 areas of application.



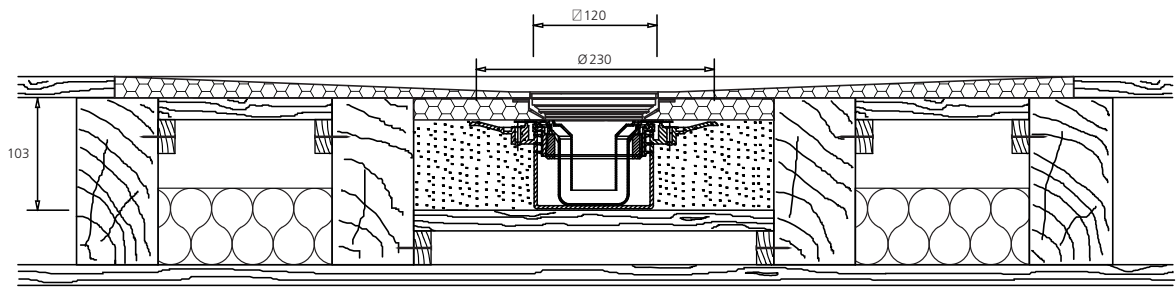
+ wedi Fundo drain

Thanks to the low installation height and waterproof security, the wedi drains are very well suited to new builds and renovations. There is a variety of different versions for vertical and horizontal designs.

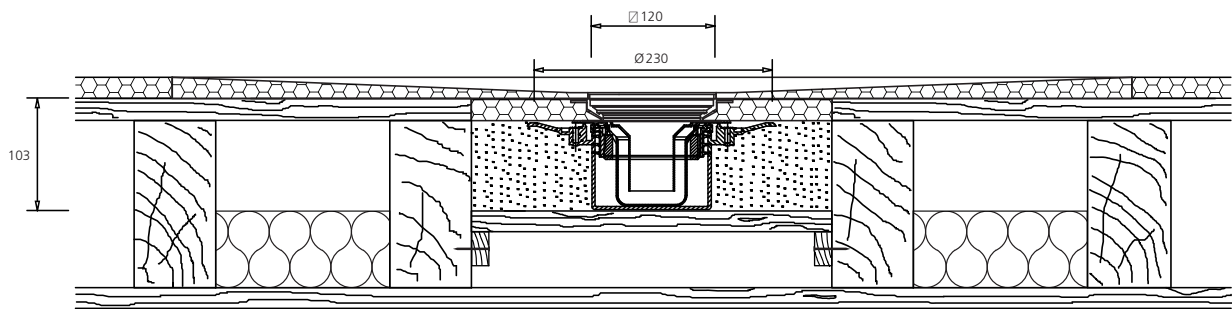


Drain versions Special solutions

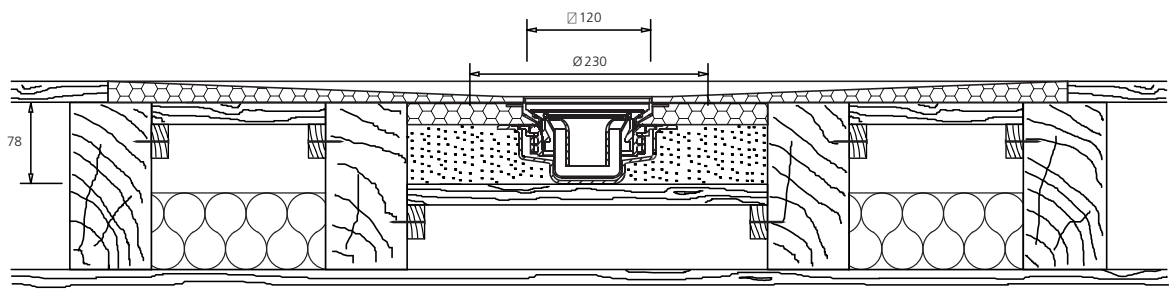
Fundo horizontal drain, DN 50, in timber beam floor



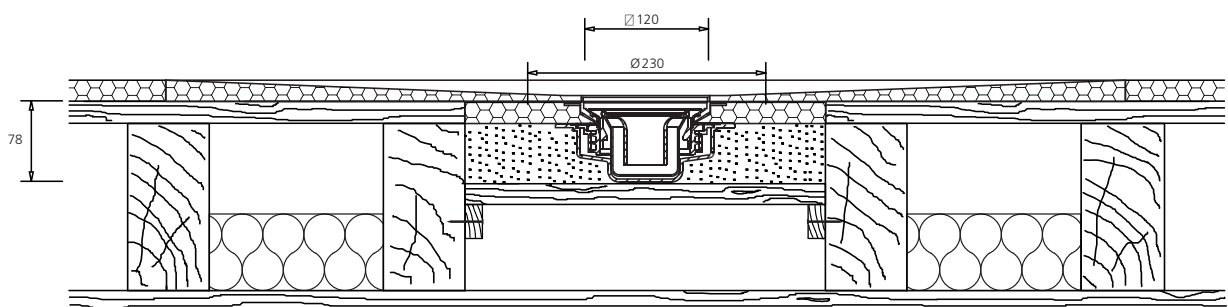
Fundo horizontal drain, DN 50, on timber beam floor



Fundo Mini Max drain, DN 40, in timber beam floor



Fundo Mini Max drain, DN 40, on timber beam floor



i You will find further technical drawings in the relevant assembly instructions and in the "Creation of flush-to-floor showers" brochure.

Item number and designs

1st selection: Floor element

	Length x width x thickness	Packaging unit	Order no.
wedi Fundo Ligno, square floor element, central drain	900 x 900 x 20/41 mm	10 units	07-37-32/011
wedi Fundo Ligno, square floor element, central drain	1200 x 1200 x 20/41 mm	10 units	07-37-32/012
wedi Fundo Ligno, square floor element, central drain	1500 x 1500 x 20/41 mm	10 units	07-37-32/013
wedi Fundo Ligno, square floor element, corner drain	900 x 900 x 20/41 mm	10 units	07-37-32/021
wedi Fundo Ligno, square floor element, corner drain	1200 x 1200 x 20/41 mm	10 units	07-37-32/023
wedi Fundo Ligno, rectangular floor element, corner drain	1200 x 900 x 20/41 mm	10 units	07-37-32/022
wedi Fundo Ligno, rectangular floor element, corner drain	1600 x 900 x 20/41 mm	10 units	07-37-32/024

2nd selection: Drain

	Packaging unit	Order no.
wedi Fundo vertical drain, DN 50, Drainage capacity 1,00 l/s ; 60,0 l/min	1 unit	07-37-89/000
wedi Fundo vertical drain, DN 50, round, Drainage capacity 1,00 l/s ; 60,0 l/min	1 unit	07-37-72/000
wedi Fundo vertical drain, DN 50, with fire protection collar, Drainage capacity 1,00 l/s ; 60,0 l/min	1 unit	07-37-49/002
wedi Fundo vertical drain, DN 70, Drainage capacity 0,88 l/s ; 52,8 l/min	1 unit	07-37-89/070
wedi Fundo horizontal drain, DN 50, Drainage capacity 0,80 l/s ; 48,0 l/min	1 unit	07-37-90/000
wedi Fundo horizontal drain, DN 50, round, Drainage capacity 0,80 l/s ; 48,0 l/min	1 unit	07-37-73/001
wedi Fundo Mini Max drain, DN 40, extra-flat, Drainage capacity 0,54 l/s ; 32,4 l/min	1 unit	07-37-90/001

3rd selection: Sealant

	Quantity / Length x width	Packaging unit	Order no.
Version 1 – Installation in screed; no wall/floor connection with wedi building board			
wedi Fundo sealing set		1 pail	07-37-96/000
wedi Subliner Dry, sealing membrane	30 m x 1 m	40 rolls	09-51-10/332
wedi Subliner Dry, sealing membrane	5 m x 1 m	96 rolls	09-51-10/305
wedi Subliner Flex, decoupling membrane	30 m x 1 m	18 rolls	09-51-10/331
wedi Subliner Dry & Flex, sealing and decoupling membrane	15 m x 1 m	36 rolls	09-51-10/315
Version 2 – Installation on the floor; connection to wall/floor with wedi building board			
wedi 610, adhesive and sealant	310 ml / 1 cartridge	20 units	07-69-02/002
wedi Tools, joint reinforcement tape	25 m x 125 mm	1 rolls	09-52-20/053
wedi Tools, joint reinforcement tape, self-adhesive	25 m x 125 mm	1 rolls	09-52-25/053



You can find countless expansion options for your shower or complete bathroom conversion in the wedi product range.



All installation instructions can be found using this QR code.





With a total installation height of just 65 mm

wedi Fundo *Plauo*

The thinnest complete system for flush-to-floor showers on the market

With the pre-integrated drain, the total system is just 65 mm flat. This innovation is second to none when it comes to renovations, where every millimetre counts. The product naturally offers all the advantages of wedi products, which have been tried-and-tested for more than 30 years – from the guaranteed 100% watertightness through to its versatile and easily implemented usage. Renovation in perfection.



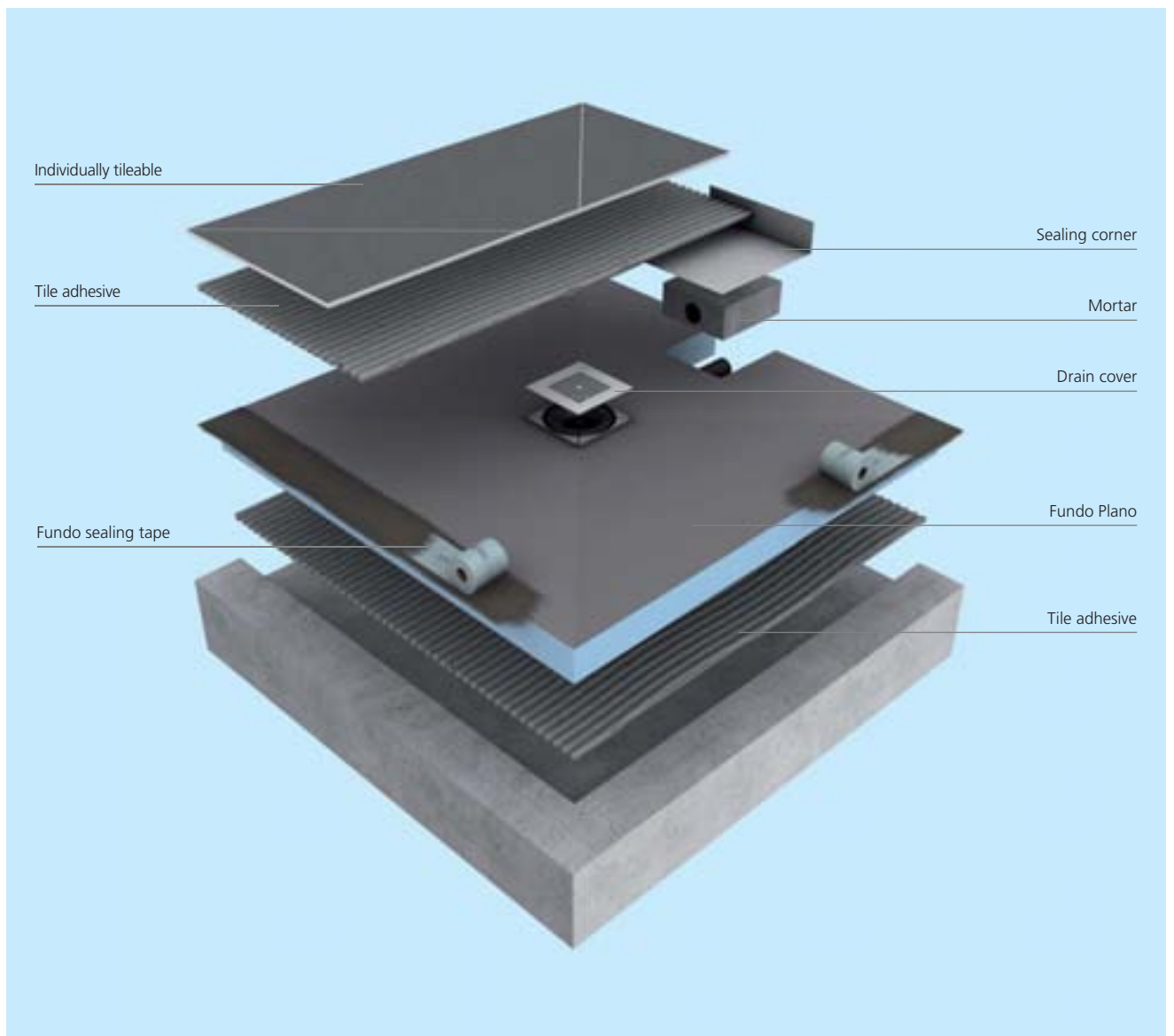
Integrated drain for rapid processing

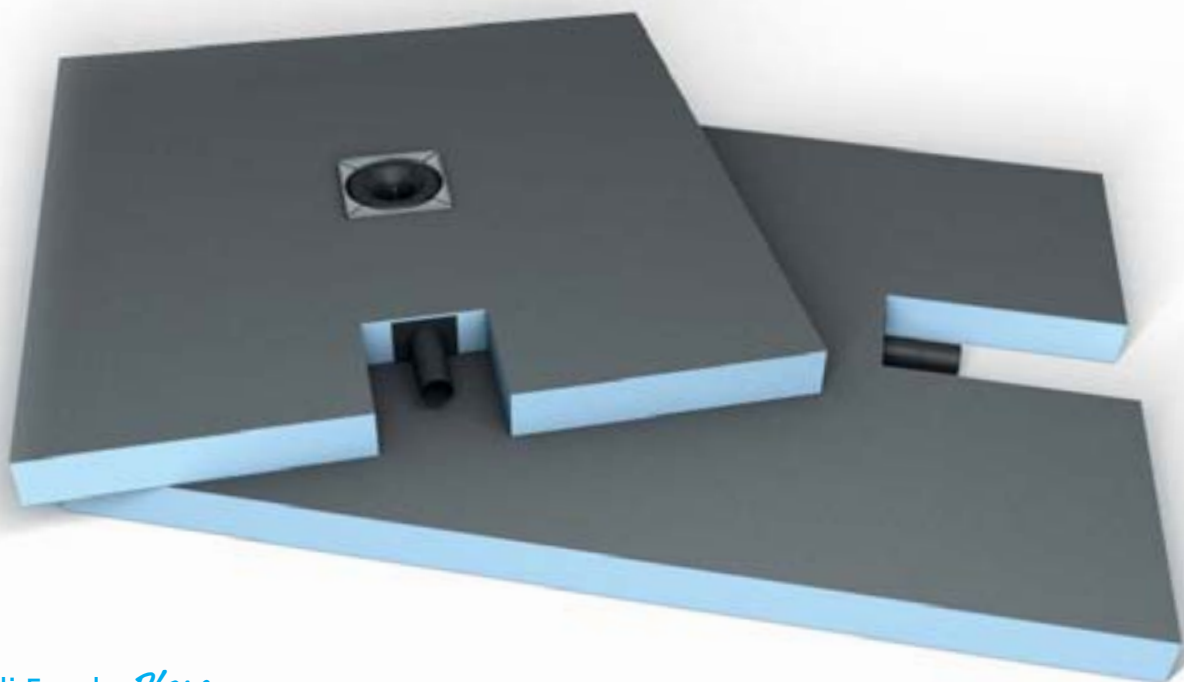


Entire system is 100% watertight



Extremely flat, ideal for renovations





wedi Fundo *Plano* and the right system components

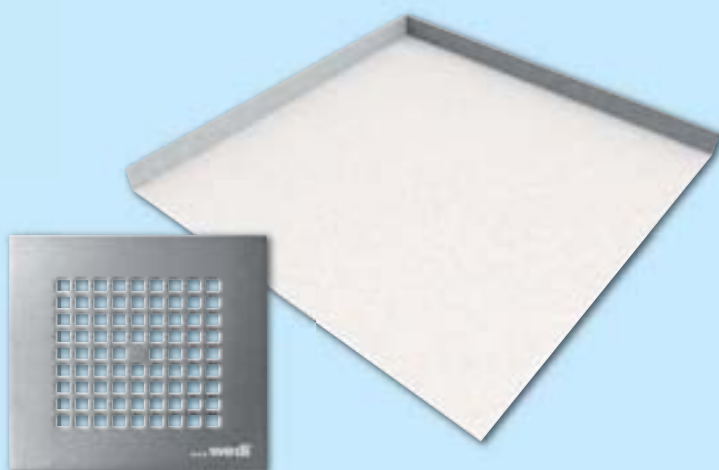
+ wedi Fundo sealing set

The sealing set to create a waterproof connection between wedi building boards or wedi Fundo and other materials not belonging to the system, e.g. screed, plasterboard, etc.



Scope of delivery:

wedi Fundo Plano has a horizontal drain DN 40 which is already integrated into the floor element. In addition, the product is also supplied with a drain cover in brushed stainless steel V₂A including frame extension and a sealing corner.

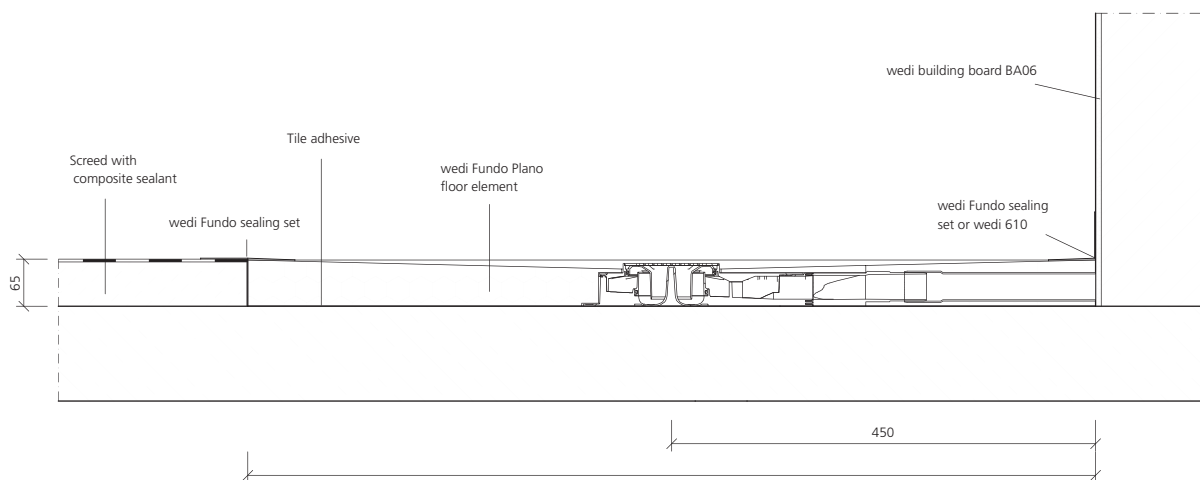


+ wedi 610

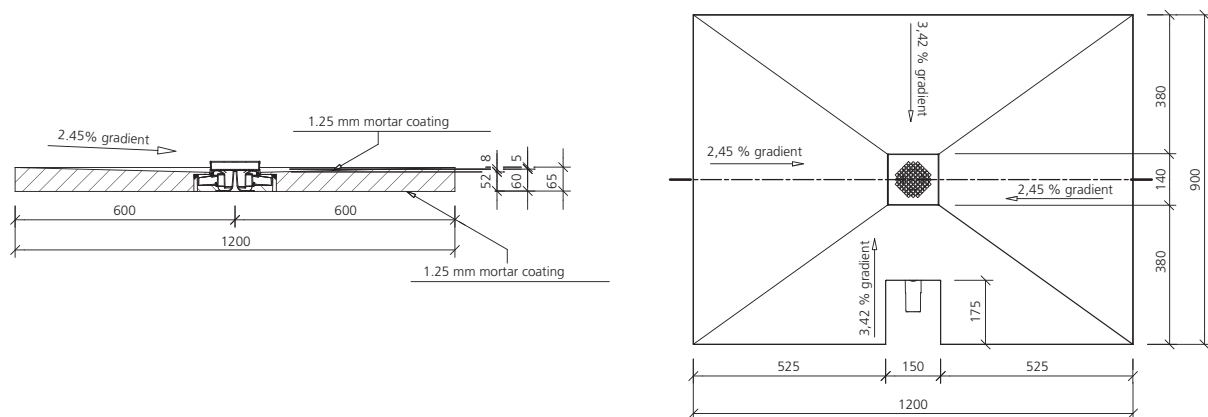
As a versatile single-component adhesive and sealant, wedi 610 is particularly well suited to creating a waterproof joint between wedi components. The combination of wedi building board and wedi 610 has an abP general appraisal certificate for the heavy-duty area.



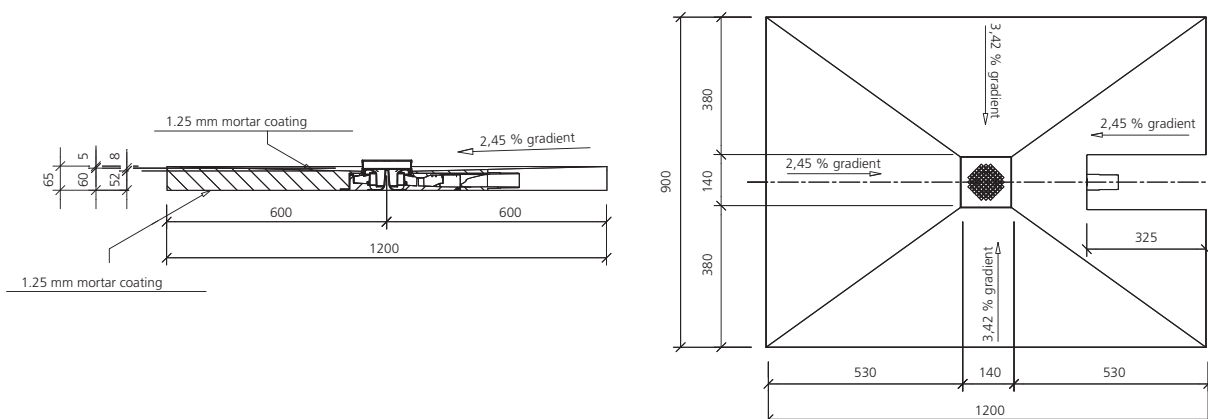
Fundo Plano, integrated horizontal drain, DN 40, screed flooring



Fundo Plano, complete system A, connection on the long side



Fundo Plano, complete system B, connection on the short side



i You will find further technical drawings in the relevant assembly instructions and in the "Creation of flush-to-floor showers" brochure.

Item number and designs

1st selection: Floor element

	Length x width x thickness	Packaging unit	Order no.
wedi Fundo Plano, complete system incl. drainage technology, point drain, DN 40	900 x 900 x 65 mm	10 units	07-37-35/600
wedi Fundo Plano, complete system incl. drainage technology, point drain, DN 40	1000 x 1000 x 65 mm	10 units	07-37-35/601
wedi Fundo Plano, complete system incl. drainage technology, point drain, DN 40	1200 x 1200 x 65 mm	10 units	07-37-35/602
wedi Fundo Plano, complete system incl. drainage technology, point drain, DN 40	1200 x 900 x 65 mm	10 units	07-37-35/603
wedi Fundo Plano, complete system incl. drainage technology, point drain, DN 40, connection on the short side	1200 x 900 x 65 mm	10 units	07-37-35/604

2nd selection: Sealant

	Quantity / Length x width	Packaging unit	Order no.
Version 1 – Installation in screed; no wall/floor connection with wedi building board			
wedi Fundo sealing set		1 pail	07-37-96/000
wedi Tools, sealing tape, fleece-lined	50 m x 100 mm	1 roll	09-51-00/352
wedi Tools, sealing tape, fleece-lined	10 m x 120 mm	1 roll	09-51-10/311
wedi Tools, sealing tape, fleece-lined	50 m x 120 mm	1 roll	09-51-10/352
wedi Tools, inside corners, fleece laminated	120 x 120 mm	25 units	09-51-30/001
wedi Tools, outside corners, fleece laminated	115 x 115 mm	25 units	09-51-35/001
Version 2 – Installation on the floor; connection to wall/floor with wedi building board			
wedi 610, adhesive sealant	310 ml / 1 cartridge	20 units	07-69-02/002
wedi Tools, joint reinforcement tape	25 m x 125 mm	1 roll	09-52-20/053
wedi Tools, joint reinforcement tape, self-adhesive	25 m x 125 mm	1 roll	09-52-25/053

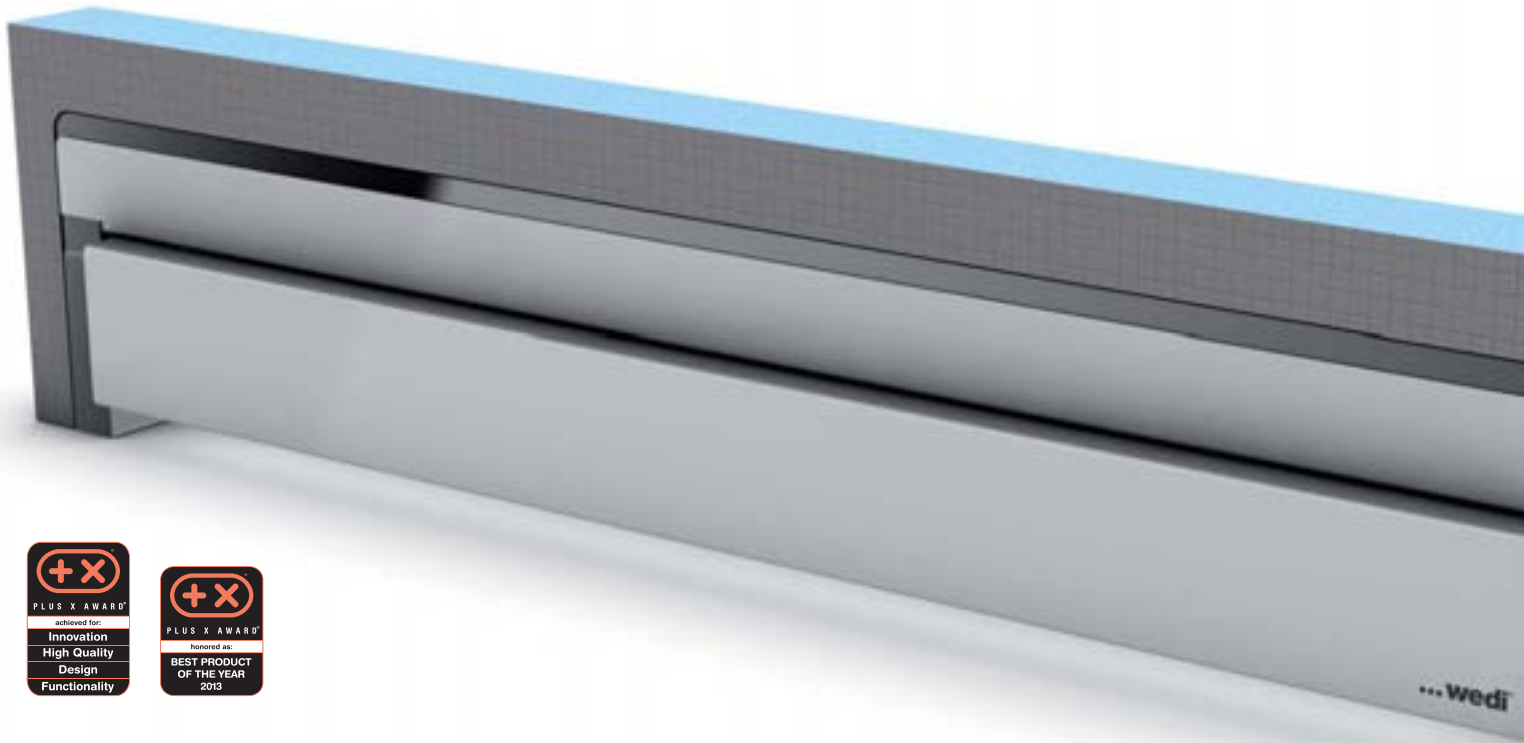


You can find countless expansion options for your shower or complete bathroom conversion in the wedi product range.



All installation instructions can be found using this QR code.





wedi Fundo *Riolito Discreto*

Optical wall drain with all the advantages of a classic floor drain

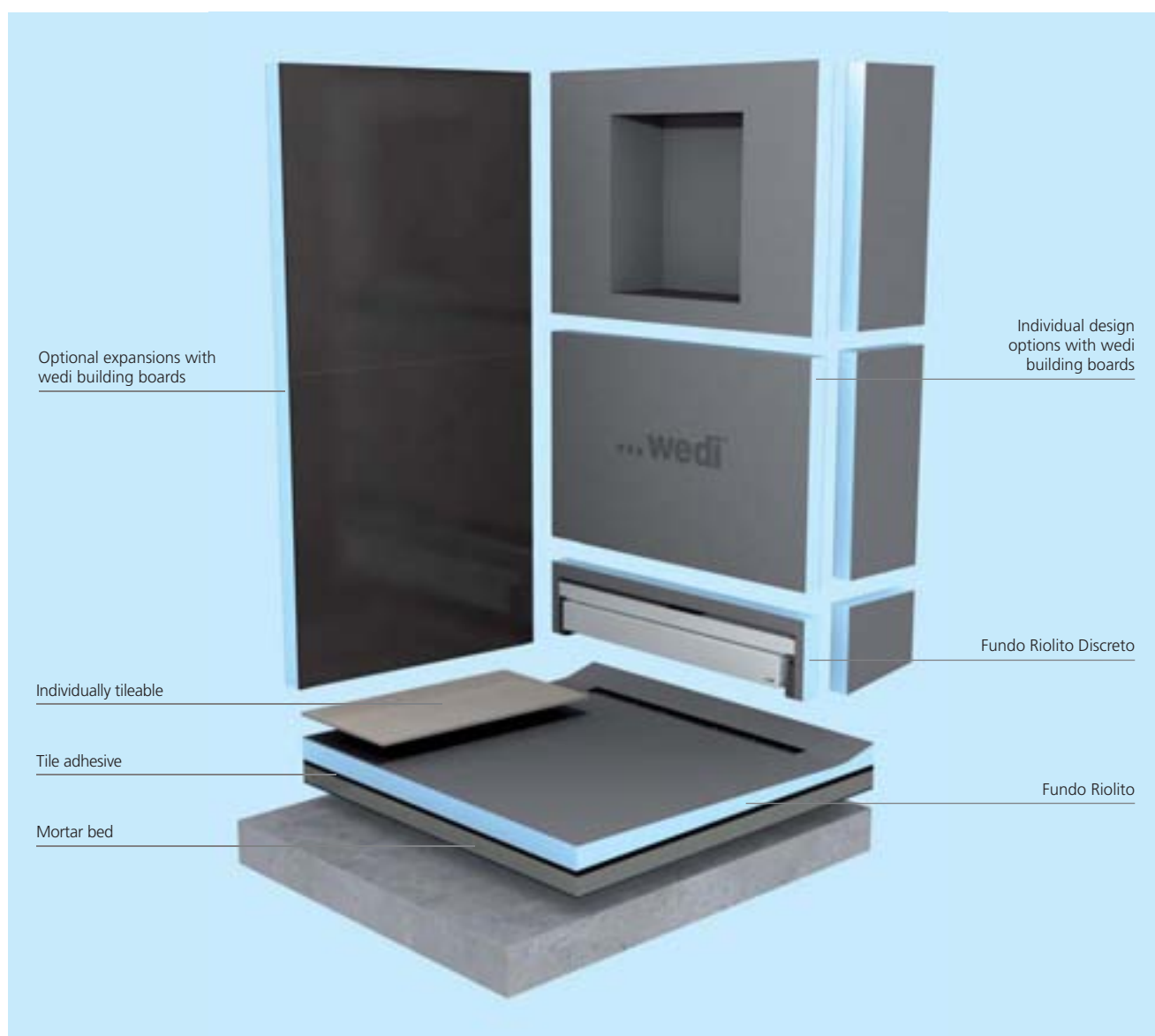
Contemporary design and completely new design options. The absolutely innovative Fundo Riolito Discreto literally tops the tried-and-tested Riolito. As a simple fixture, this clever innovation creates the illusion of a wall drain. The fixture can be easily expanded in all directions. Whether as a seat, shelf or a complete false wall - there are no limits to the design ideas with these system components.

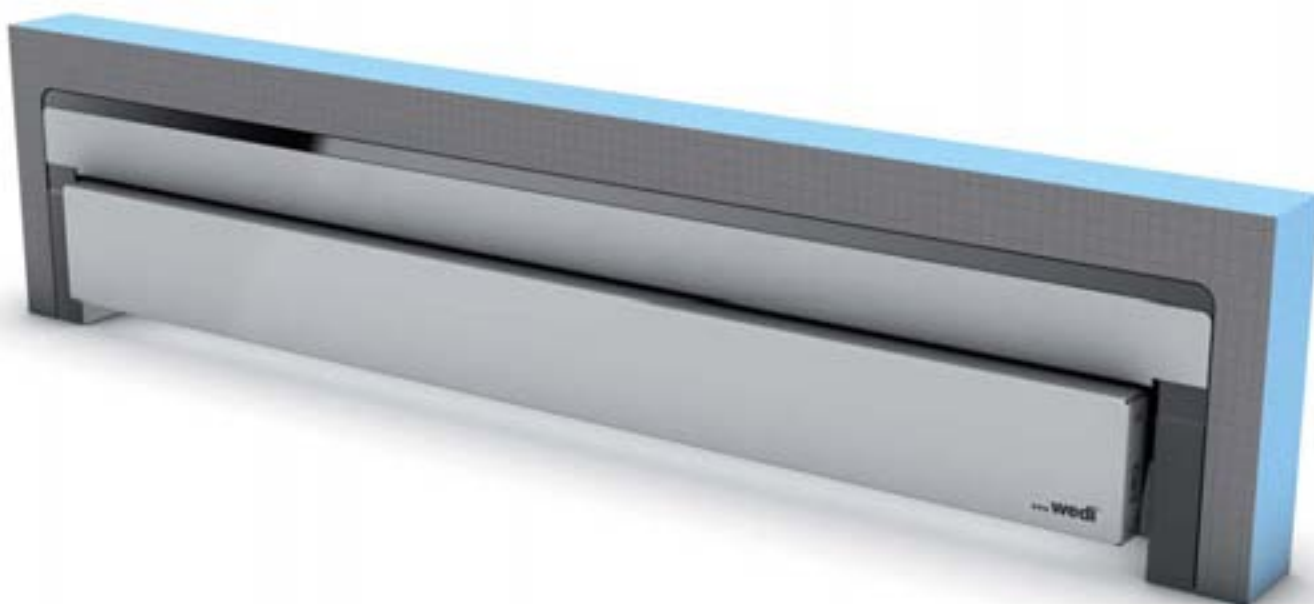


Attractive wall drain through practical fixture module



Use of both sides of the cover possible: stainless steel or tiles





wedi Fundo *Riolito Discreto* and the right system components

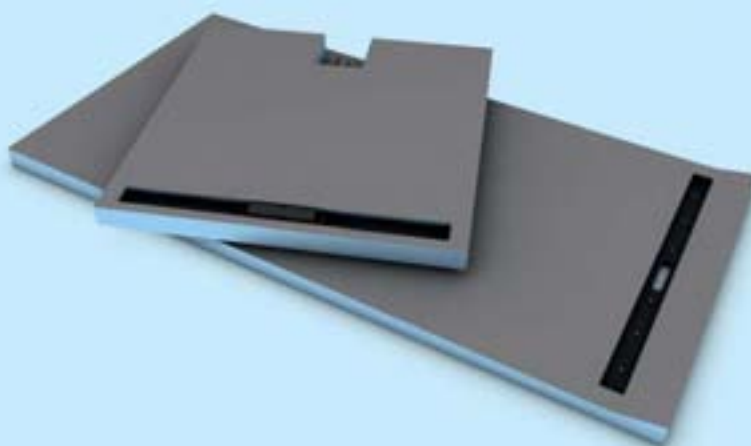
+ wedi 610

As a versatile single-component adhesive and sealant, wedi 610 is particularly well suited to creating a waterproof joint between wedi components. The combination of wedi building board and wedi 610 has an abP general appraisal certificate for the heavy-duty area.



+ wedi Fundo *Plano Linea* or wedi Fundo *Riolito*

This flush-to-floor shower element is captivating with its sophisticated linear drainage. The exact slope required for this is already shaped permanently into the floor elements. The drain is also completely integrated with the Fundo Plano Linea.

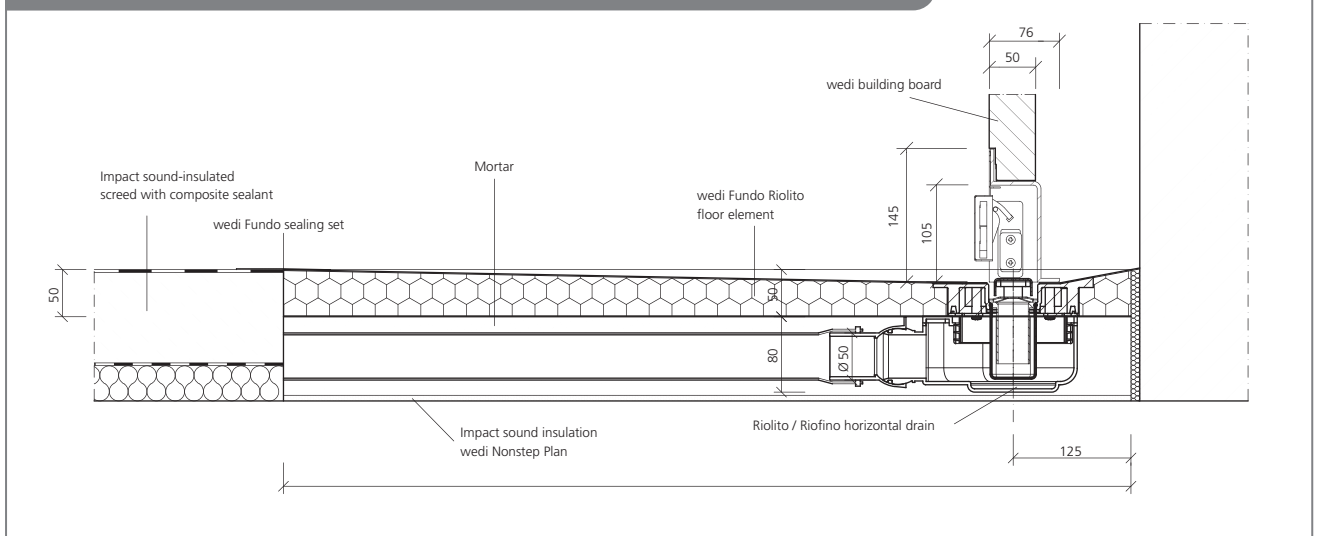


+ wedi Fundo sealing set

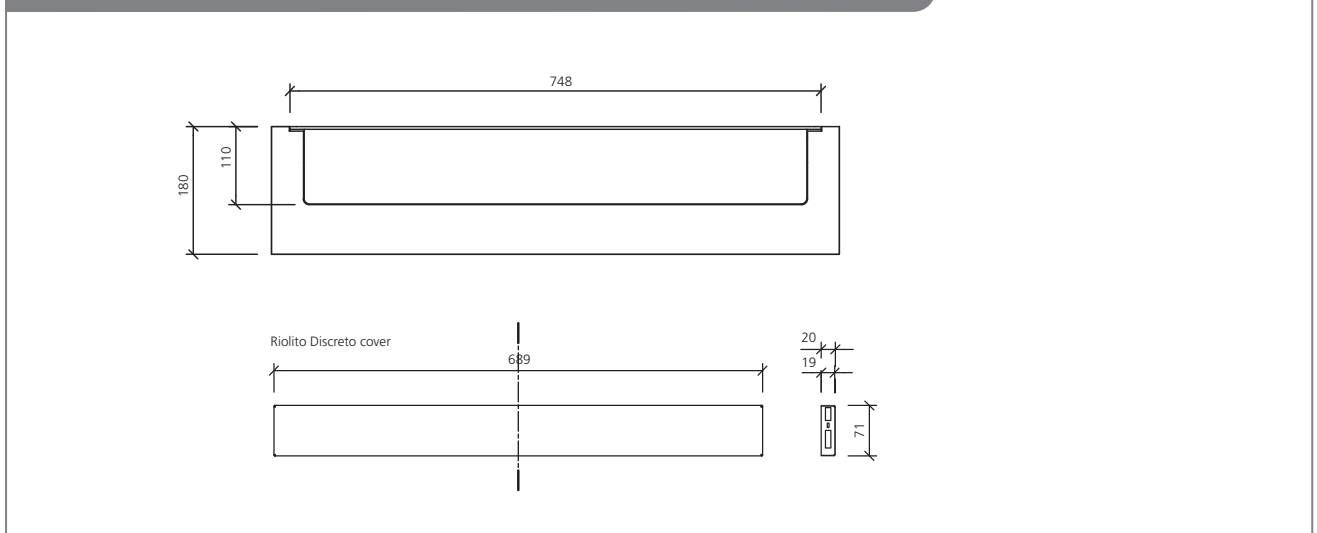
The sealing set to create a waterproof connection between wedi building boards or wedi Fundo and other materials not belonging to the system, e.g. screed, plasterboard, etc.



Fundo Riolito Discreto, wall drain, DN 50, screed floor



Fundo Riolito Discreto, wall drain, drain cover



From the bench solution ...



... to individual storage options ...



... to the complete false wall!



i You will find further technical drawings in the relevant assembly instructions and in the "Creation of flush-to-floor showers" brochure.

Item numbers and designs

1st selection: Attachment element

	Length x height x depth	Packaging unit	Order no.
wedi Fundo Riolito Discreto, attachment element for Fundo Riolito	800 x 180 x 76 mm ①	1 unit	07-37-38/200
wedi Fundo Riolito Discreto, attachment element for Fundo Riolito	900 x 180 x 76 mm ②	1 unit	07-37-38/201
wedi Fundo Riolito Discreto, attachment element for Fundo Riolito	1000 x 180 x 76 mm ③	1 unit	07-37-38/202

i The numbers ①, ② and ③ show the correct combination alternatives with the Fundo Riolito floor element.

2nd selection: Floor element

	Length x width x thickness	Gutter length	Order no.
wedi Fundo Riolito, floor element with laterally integrated channel drain, rectangular	900 x 800 x 50 mm	700 mm ①	07-37-34/357
wedi Fundo Riolito, floor element with laterally integrated channel drain, rectangular	1200 x 800 x 50 mm	700 mm ①	07-37-34/351
wedi Fundo Riolito, floor element with laterally integrated channel drain, rectangular	1200 x 900 x 50 mm	800 mm ②	07-37-34/356
wedi Fundo Riolito, floor element with laterally integrated channel drain, rectangular	1800 x 900 x 60 mm	800 mm ②	07-37-34/358
wedi Fundo Riolito, floor element with laterally integrated channel drain, rectangular	900 x 1000 x 50 mm	900 mm ③	07-37-34/350
wedi Fundo Riolito, floor element with laterally integrated channel drain, rectangular	1200 x 1000 x 50 mm	900 mm ③	07-37-34/352
wedi Fundo Riolito, floor element with laterally integrated channel drain, square	900 x 900 x 50 mm	800 mm ②	07-37-34/354

3rd selection: Sealant

	Quantity / Length x width	Packaging unit	Order no.
Version 1 – Installation in screed; no wall/floor connection with wedi building board			
wedi Fundo sealing set		1 pail	07-37-96/000
wedi Tools, sealing tape, fleece-lined	50 m x 100 mm	1 roll	09-51-00/352
wedi Tools, sealing tape, fleece-lined	10 m x 120 mm	1 roll	09-51-10/311
wedi Tools, sealing tape, fleece-lined	50 m x 120 mm	1 roll	09-51-10/352
wedi Tools, inside corners, fleece laminated	120 x 120 mm	25 units	09-51-30/001
wedi Tools, outside corners, fleece laminated	115 x 115 mm	25 units	09-51-35/001
Version 2 – Installation on the floor; connection to wall/floor with wedi building board			
wedi 610, adhesive sealant	310 ml / 1 cartridge	20 units	07-69-02/002
wedi Tools, joint reinforcement tape	25 m x 125 mm	1 roll	09-52-20/053
wedi Tools, joint reinforcement tape, self-adhesive	25 m x 125 mm	1 roll	09-52-25/053



You can find countless expansion options for your shower or complete bathroom conversion in the wedi product range.



All installation instructions can be found using this QR code.





wedi Fundo fire protection collar

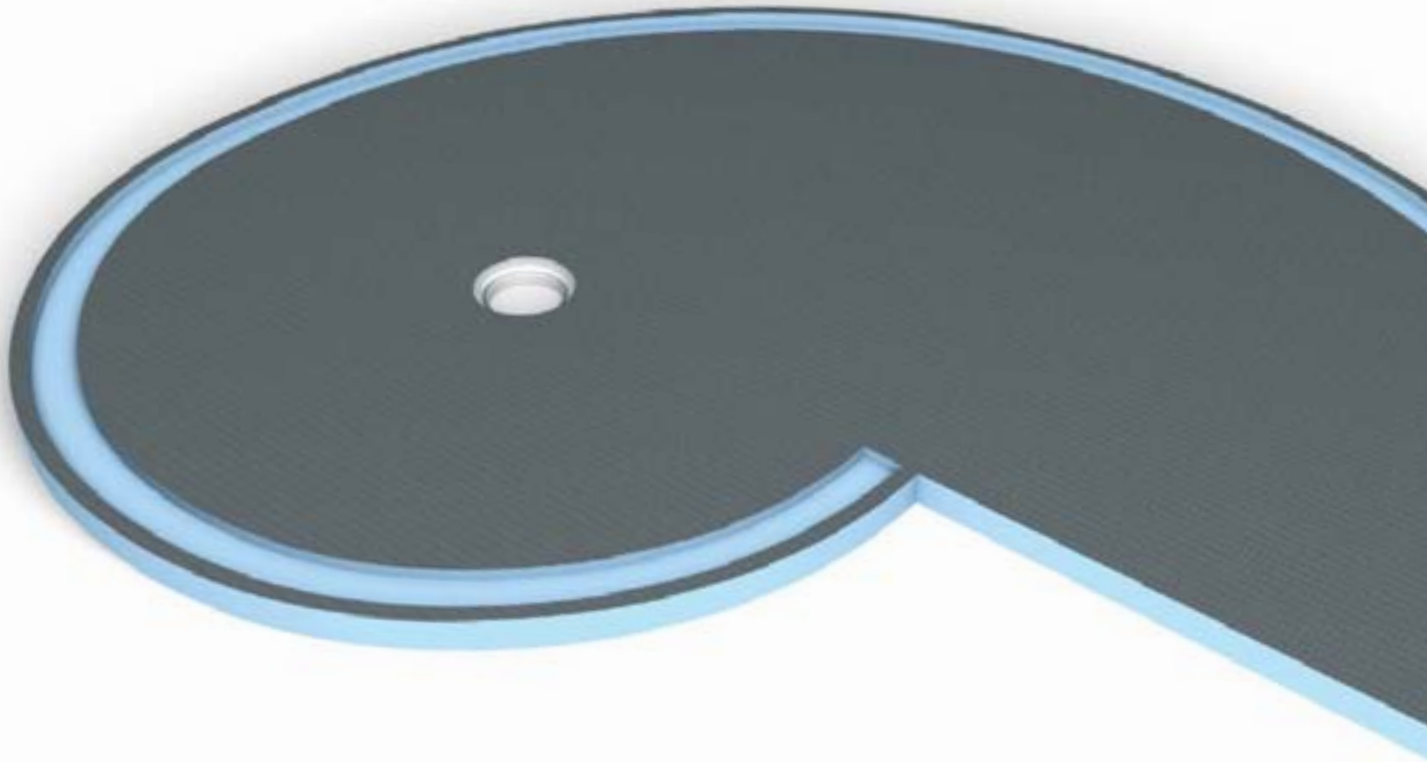
Small part, big effect. The perfect fire prevention measure for all Fundo designs

Effective fire prevention is a must, especially in apartment buildings, public buildings and commercial properties. With the wedi fire protection collar for all Fundo vertical drains, buildings can be easily, safely and sustainably protected.

Item numbers and designs

	Packaging unit	Order no.
wedi fire protection collar for Fundo vertical drain, DN 50	1 unit	07-37-49/002
wedi fire protection collar for Fundo Riolito / Riofino, vertical drain, DN 50	1 unit	07-37-89/012





wedi Fundo *Nautilo*

Flush-to-floor shower element
in a distinct shell shape

Flush-to-floor showers are virtually essential nowadays, especially in public spa facilities, as they combine a high-quality appearance with a high degree of functionality. The wedi Fundo design concept combines creative lines with natural forms and offers the right wall elements for the Fundo Trollo and Nautilo floor elements as well – with or without the supply channels.



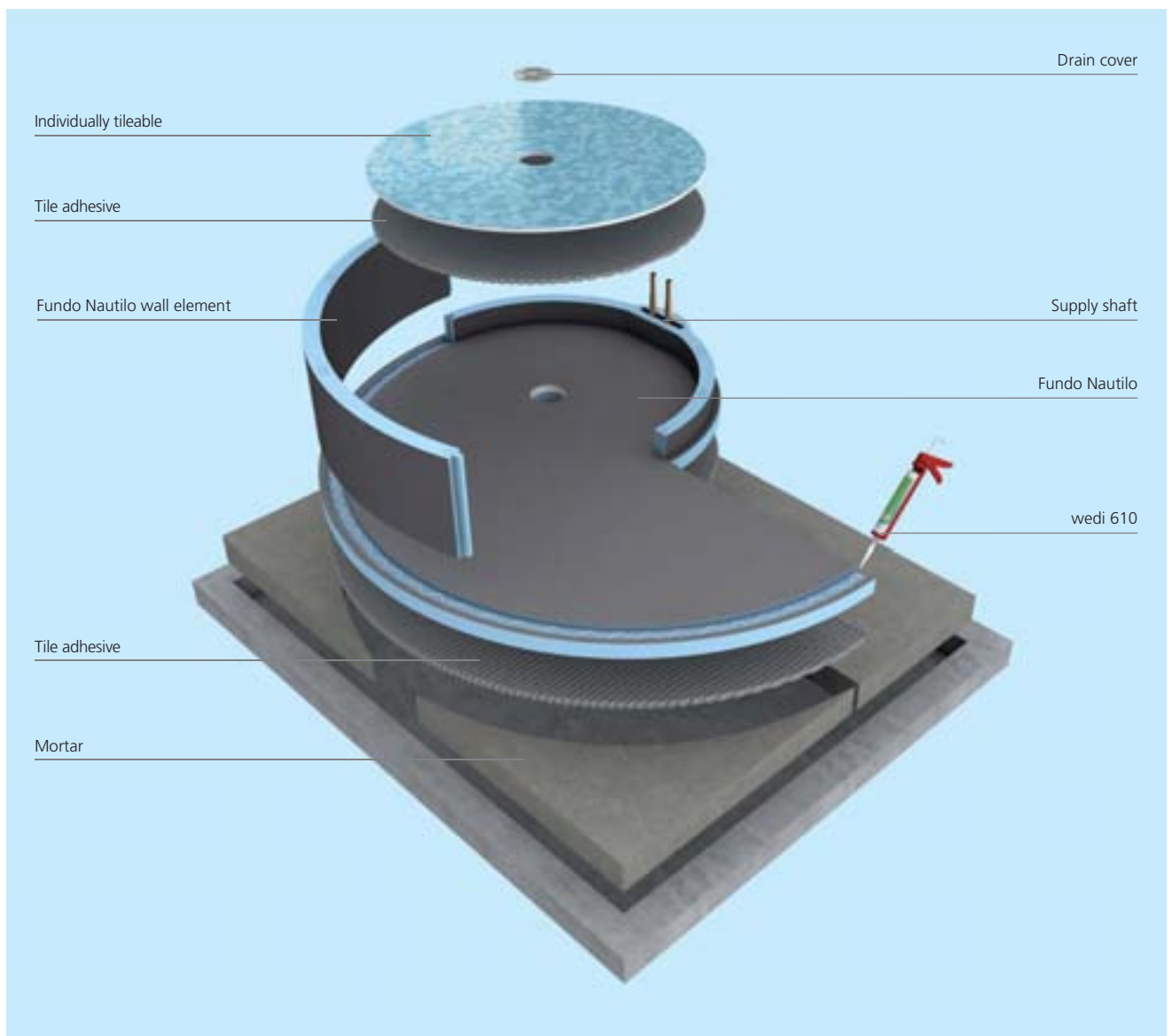
True-to-size wall
elements available

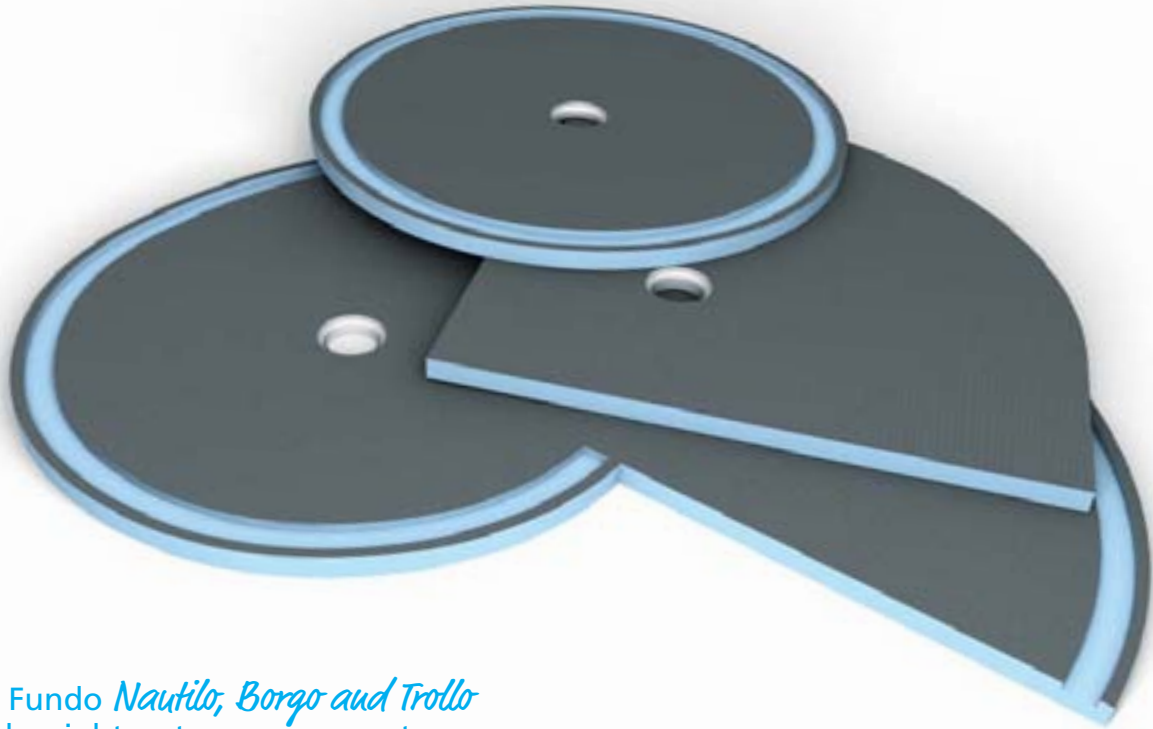


Exactly uniform
predefined gradient



Particularly stable
surfaces





wedi Fundo *Nautilo, Borgo and Trollo*
and the right system components

+ wedi Fundo drain

Thanks to the low installation height and waterproof security, the wedi drains are very well suited to new builds and renovations. There is a variety of different versions for vertical and horizontal designs.



+ wedi Fundo sealing set

The sealing set to create a waterproof connection between wedi building boards or wedi Fundo and other materials not belonging to the system, e.g. screed, plasterboard, etc.



+ wedi *Tools* joint reinforcement tape

Special (self-adhesive) fabric tape to fix and bridge the protruding edges of building boards.

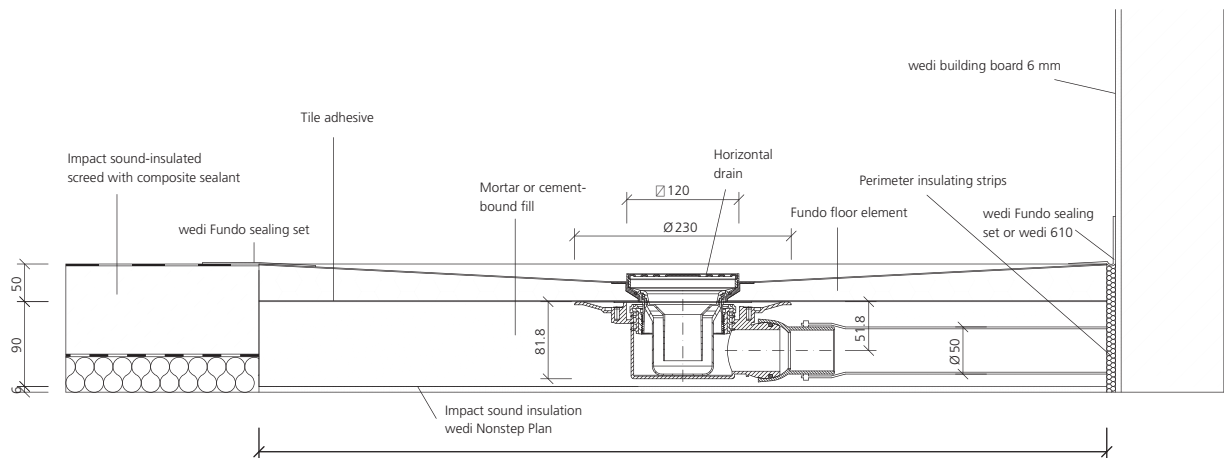


+ wedi 610

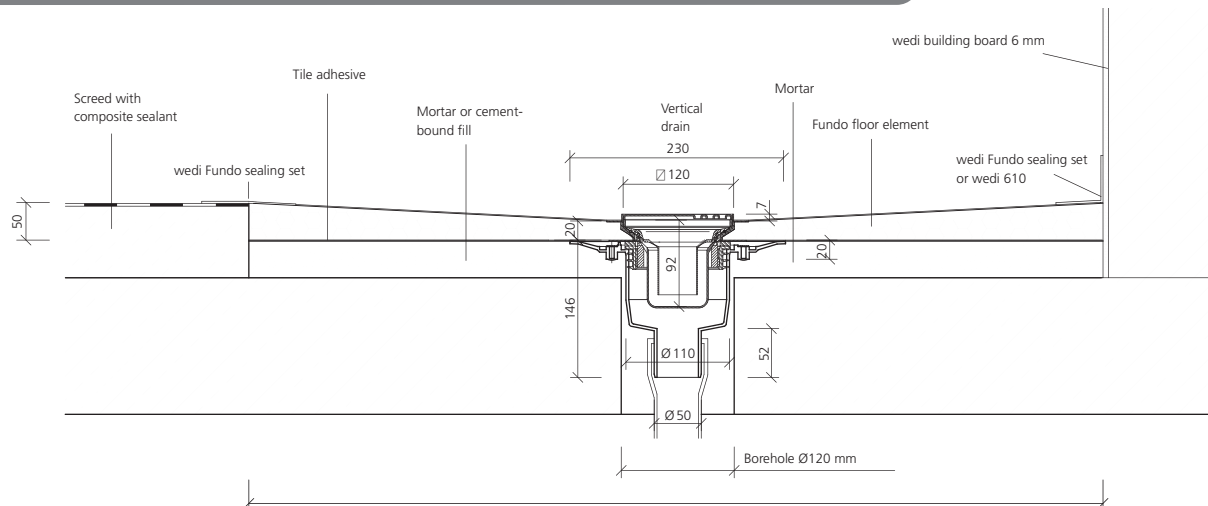
As a versatile single-component adhesive and sealant, wedi 610 is particularly well suited to creating a waterproof joint between wedi components. The combination of wedi building board and wedi 610 has an abP general appraisal certificate for the heavy-duty area.



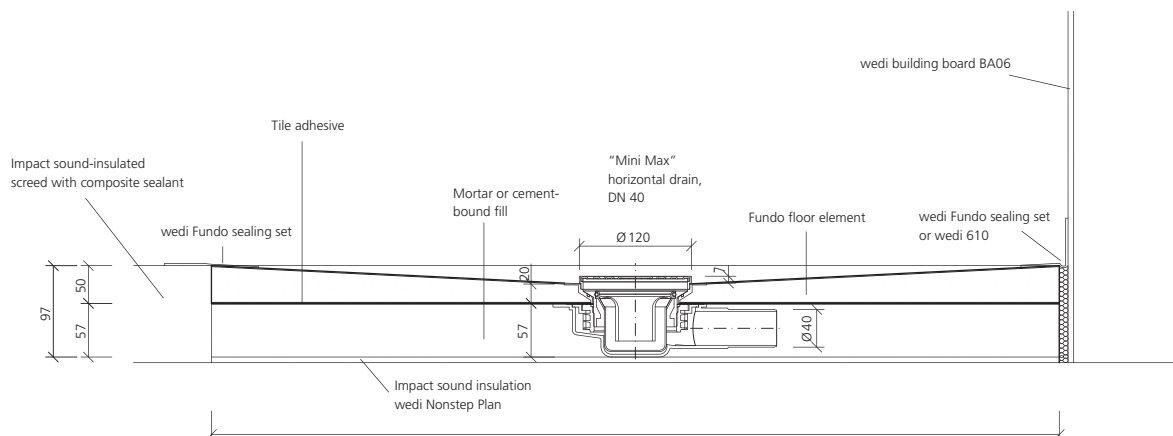
Fundo horizontal drain, DN 50, screed flooring



Fundo vertical drain, DN 50, screed flooring (also available with fire breakpoint and DN 70)



Fundo Mini Max drain, DN 40



i You will find further technical drawings in the relevant assembly instructions and in the "Creation of flush-to-floor showers" brochure.

Item numbers and designs

1st selection: Floor element

	Length x width x thickness	Packaging unit	Order no.
wedi Fundo Nautilo, right entry	1890 x 1515 x 50 mm	10 units	07-37-36/066
wedi Fundo Nautilo, left entry	1890 x 1515 x 50 mm	10 units	07-37-36/065

2nd selection: Wall element

	Height	Packaging unit	Order no.
wedi Fundo Nautilo, wall element	2015 mm	1 unit	04-17-08/000
wedi Fundo Nautilo, extension collar	500 mm	1 unit	04-17-08/052
wedi Fundo Nautilo ^{libero} , wall element	2050 mm	1 unit	04-17-08/002
wedi Fundo Nautilo ^{libero} , extension collar	500 mm	1 unit	04-17-08/053

3rd selection: Drain

	Packaging unit	Order no.
wedi Fundo vertical drain, DN 50, Drainage capacity 1,00 l/s ; 60,0 l/min	1 unit	07-37-89/000
wedi Fundo vertical drain, DN 50, round, Drainage capacity 1,00 l/s ; 60,0 l/min	1 unit	07-37-72/000
wedi Fundo vertical drain, DN 50, with fire protection collar, Drainage capacity 1,00 l/s ; 60,0 l/min	1 unit	07-37-49/002
wedi Fundo vertical drain, DN 70, Drainage capacity 0,88 l/s ; 52,8 l/min	1 unit	07-37-89/070
wedi Fundo horizontal drain, DN 50, Drainage capacity 0,80 l/s ; 48,0 l/min	1 unit	07-37-90/000
wedi Fundo horizontal drain, DN 50, round, Drainage capacity 0,80 l/s ; 48,0 l/min	1 unit	07-37-73/001
wedi Fundo Mini Max drain, DN 40, extra-flat, Drainage capacity 0,54 l/s ; 32,4 l/min	1 unit	07-37-90/001

4th selection: Sealant

	Quantity / length x width	Packaging unit	Order no.
Version 1 – Installation in screed; no wall/floor connection with wedi building board			
wedi Fundo sealing set		1 pail	07-37-96/000
wedi Tools, sealing tape, fleece-lined	50 m x 100 mm	1 roll	09-51-00/352
wedi Tools, sealing tape, fleece-lined	10 m x 120 mm	1 roll	09-51-10/311
wedi Tools, sealing tape, fleece-lined	50 m x 120 mm	1 roll	09-51-10/352
wedi Tools, inside corners, fleece laminated	120 x 120 mm	25 units	09-51-30/001
wedi Tools, outside corners, fleece laminated	115 x 115 mm	25 units	09-51-35/001
Version 2 – Installation on the floor; connection to wall/floor with wedi building board			
wedi 610, adhesive sealant	310 ml / 1 cartridge	20 units	07-69-02/002
wedi Tools, joint reinforcement tape	25 m x 125 mm	1 roll	09-52-20/053
wedi Tools, joint reinforcement tape, self-adhesive	25 m x 125 mm	1 roll	09-52-25/053

5th selection: Drain grates

	Length x width x thickness	Packaging unit	Order no.
wedi Fundo Fino modern, drain grid, stainless steel, incl. plastic frames	95 x 95 x 8 mm	1 unit	07-37-66/000
wedi Fundo Fino modern, drain grid, stainless steel, incl. plastic frames	142 x 142 x 8 mm	1 unit	07-37-66/150
wedi Fundo Fino classic, drain grid, stainless steel, screw in, incl. stainless steel frames	120 x 120 x 10 mm	1 unit	07-37-70/000
wedi Fundo Fino exclusive, drain grid, solid stainless steel, square	115 x 115 x 5 mm	1 unit	67-67-97/000
wedi Fundo Fino perfect, drain grid, solid stainless steel, round	Ø 115 mm	1 unit	67-67-97/020
wedi Fundo Fino maritime, drain grid, solid stainless steel, round	Ø 115 mm	1 unit	67-67-97/019
wedi Fundo Fino minimal, drain grid, stainless steel, round	Ø 115 mm	1 unit	07-37-71/000



You can find countless expansion options for your shower or complete bathroom conversion in the wedi product range.



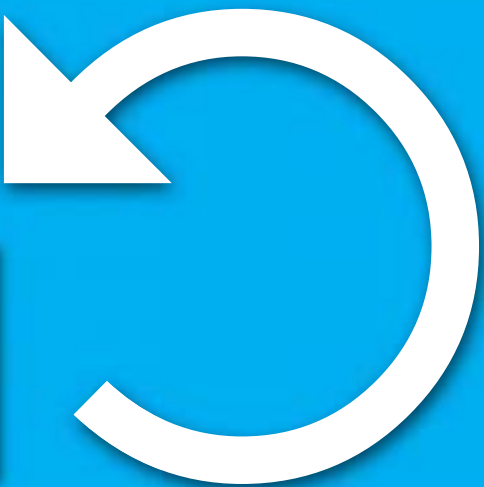
All installation instructions can be found using this QR code.

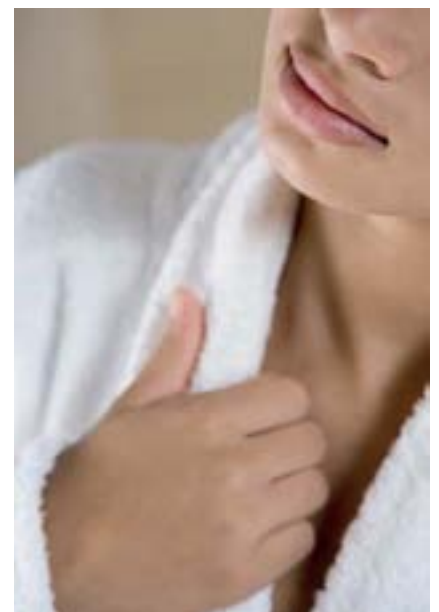
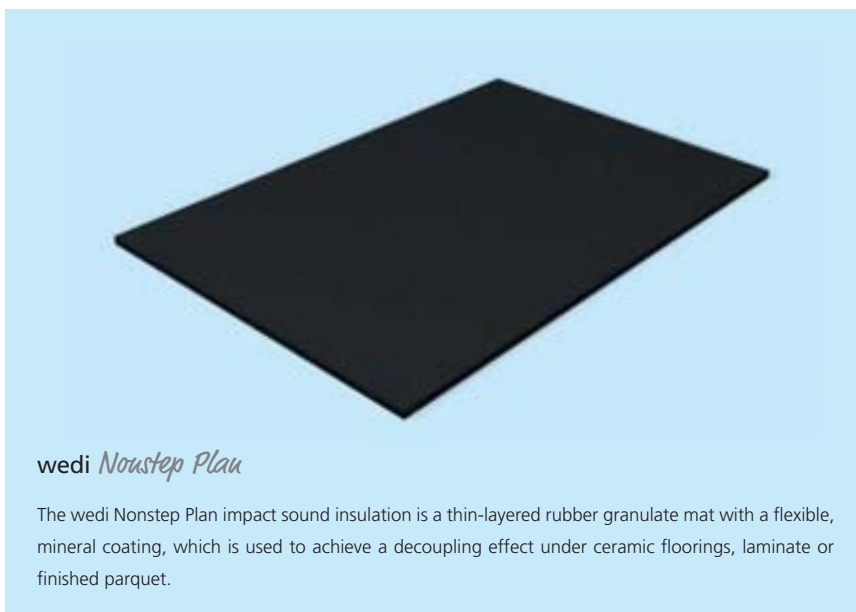
Turning

Besides the countless Fundo floor systems and the system components required to install these, wedi also offers a variety of creative design options for your whole bathroom.

Please turn the brochure by 180 degrees and leaf through it from back to front. Let us also turn your bathroom literally "upside down".

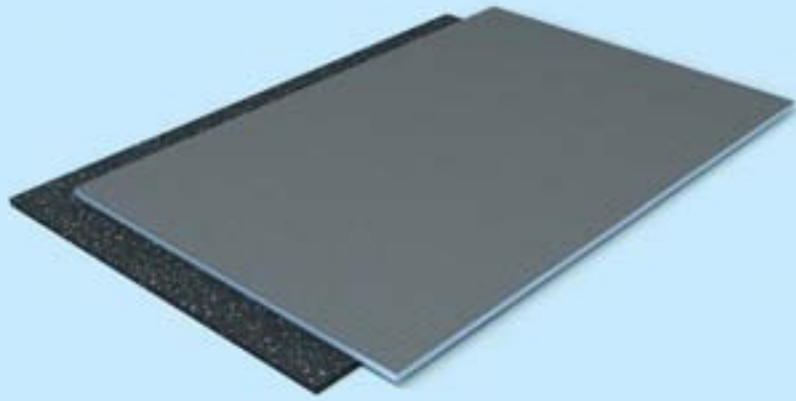
point





wedi *Nonstep Plus*

The wedi Nonstep Plus impact sound insulation is a 6 mm wedi building board, which is joined to a 5 mm rubber mat during manufacture so that a stepped profile bond is created. The impact sound insulating panel is used to create a decoupling effect under ceramic flooring, laminate and finished parquet. This thin-layered impact insulation particularly shows its strength in 2-storey houses, public buildings and apartment blocks.

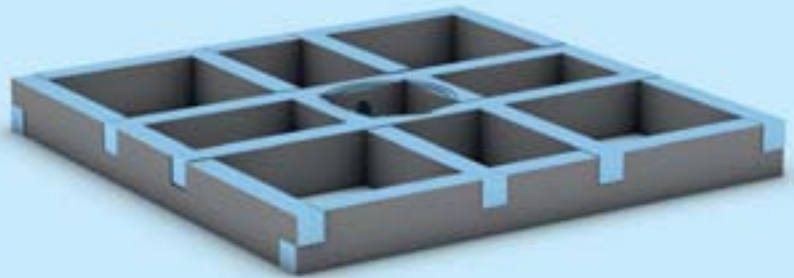


IMPACT SOUND INSULATION



wedi Fundo *Primo Easy Set*

With this simply complete set, flush-to-floor wedi Fundo Primo showers can be quickly and easily adjusted to the right height – without any laborious filling with mortar and screed. Be it a platform solution or classic lining, the total installation height of the Fundo Primo Easy Set plus Fundo floor element is 14 cm.

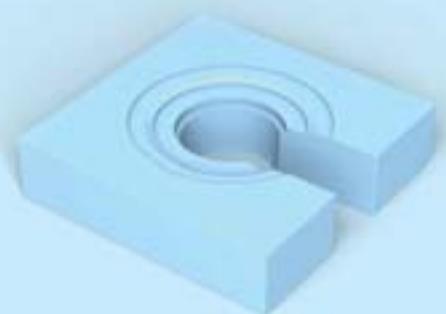


SUBSTRUCTURES



wedi Fundo *Ligno* drain substructure element

The Fundo Ligno drain substructure element is designed especially for use of the Fundo Ligno in timber beam floors.





DRAIN COVERS

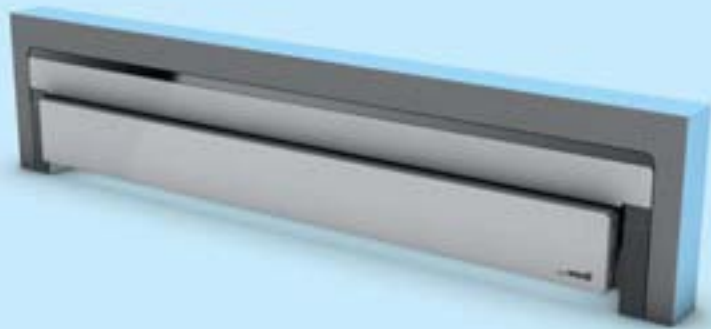




WALL DRAIN

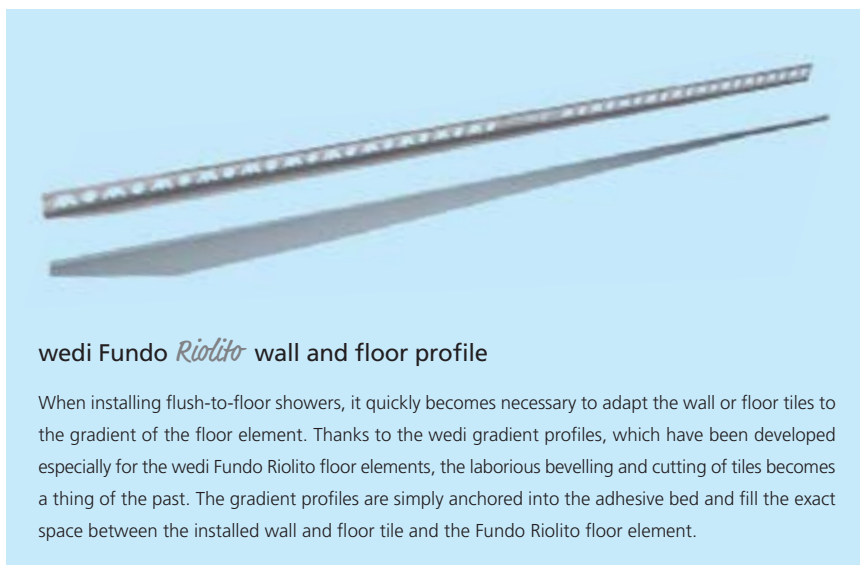
wedi Fundo *Riolito Discreto*

The absolutely innovative Fundo Riolito Discreto literally tops the tried-and-tested Riolito. As a simple fixture, this clever innovation creates the illusion of a wall drain. The fixture can be easily expanded in all directions. Whether as a seat, shelf or a complete false wall – there are no limits to the design ideas with these system components.





END PROFILES



wedi Fundo *Riolito* wall and floor profile

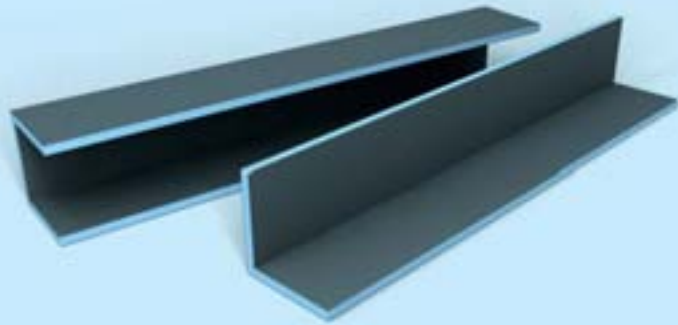
When installing flush-to-floor showers, it quickly becomes necessary to adapt the wall or floor tiles to the gradient of the floor element. Thanks to the wedi gradient profiles, which have been developed especially for the wedi Fundo Riolito floor elements, the laborious bevelling and cutting of tiles becomes a thing of the past. The gradient profiles are simply anchored into the adhesive bed and fill the exact space between the installed wall and floor tile and the Fundo Riolito floor element.



SHELVES & STORAGE

wedi *Meusolo-L & -U*

Even in showers, shelving and niche solutions are extremely popular and also very practical. As well as the extra space for implements of all kinds, you can place a slight emphasis using design and lighting.

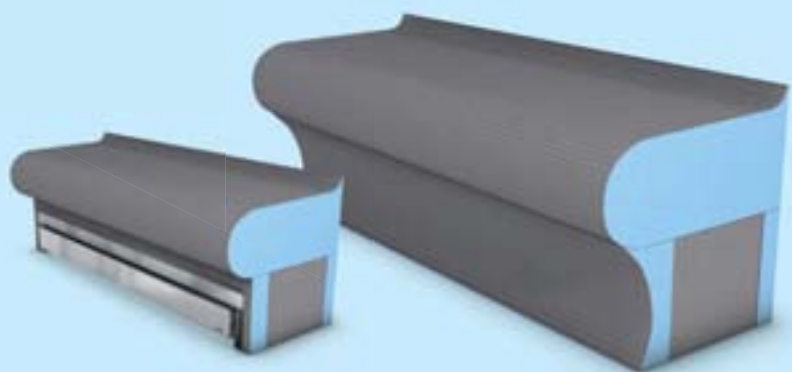




SEATING SOLUTIONS

wedi Sanoasa *Bellina*

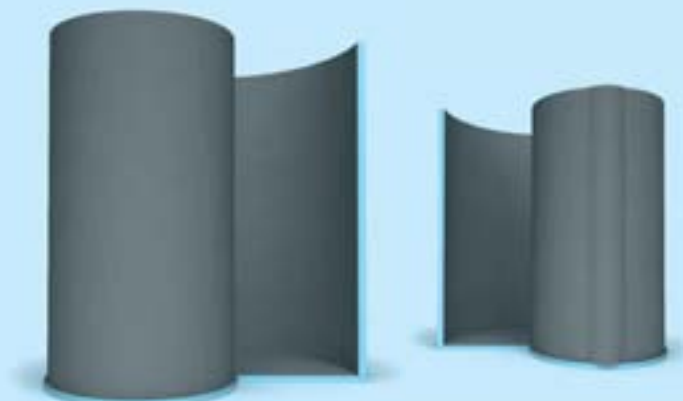
The Sanoasa benches are available in so many different designs that you can build virtually any combination of seating. Whether it's straight benches or clean connecting solutions, they will place an emphasis in any bathroom or spa facility by the time the tiling has been completed.





wedi Fundo *Nautilo* wall element

Extraordinary shower shapes in your own bathroom? But of course! wedi offers a variety of systems with floor and wall elements. Square, round or shell-shaped – always the right idea to suit any space and any taste.





WALL ELEMENTS



wedi *Moltoromo*

With the modular wedi Moltoromo system, a variety of wall shapes can be sensationally created for different bathroom and spa uses. Round shapes, corner solutions and wavy lines are quick and easy to fit. There are no limits to the design with tiles, plaster and other finishes.



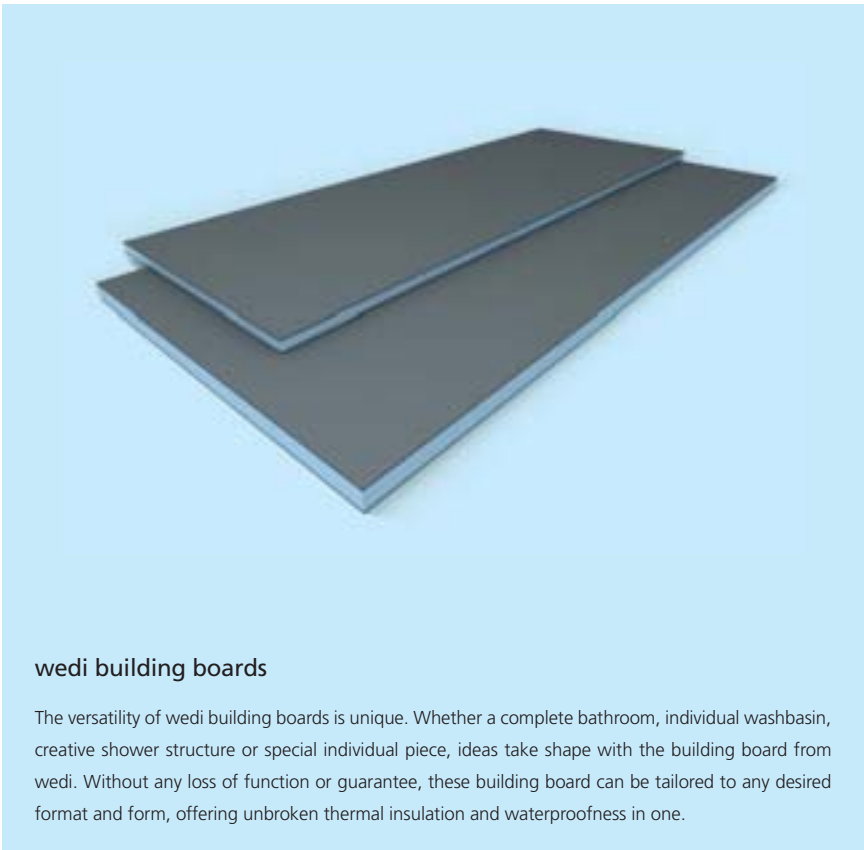


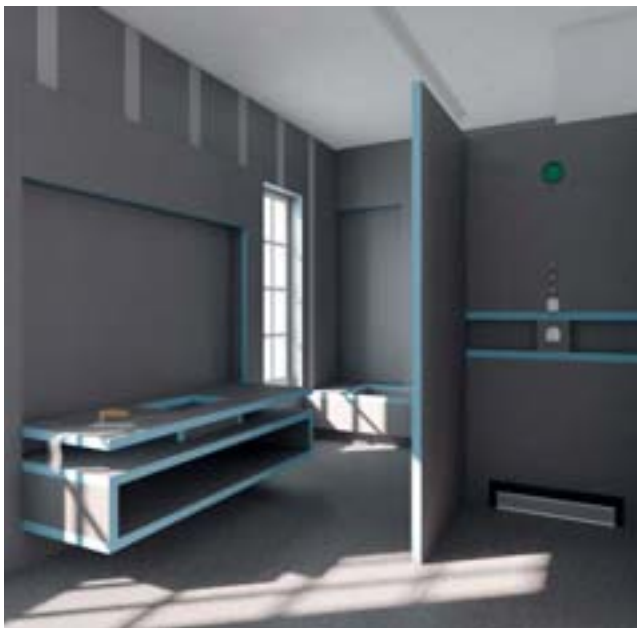
PARTITION WALLS





© Jostba



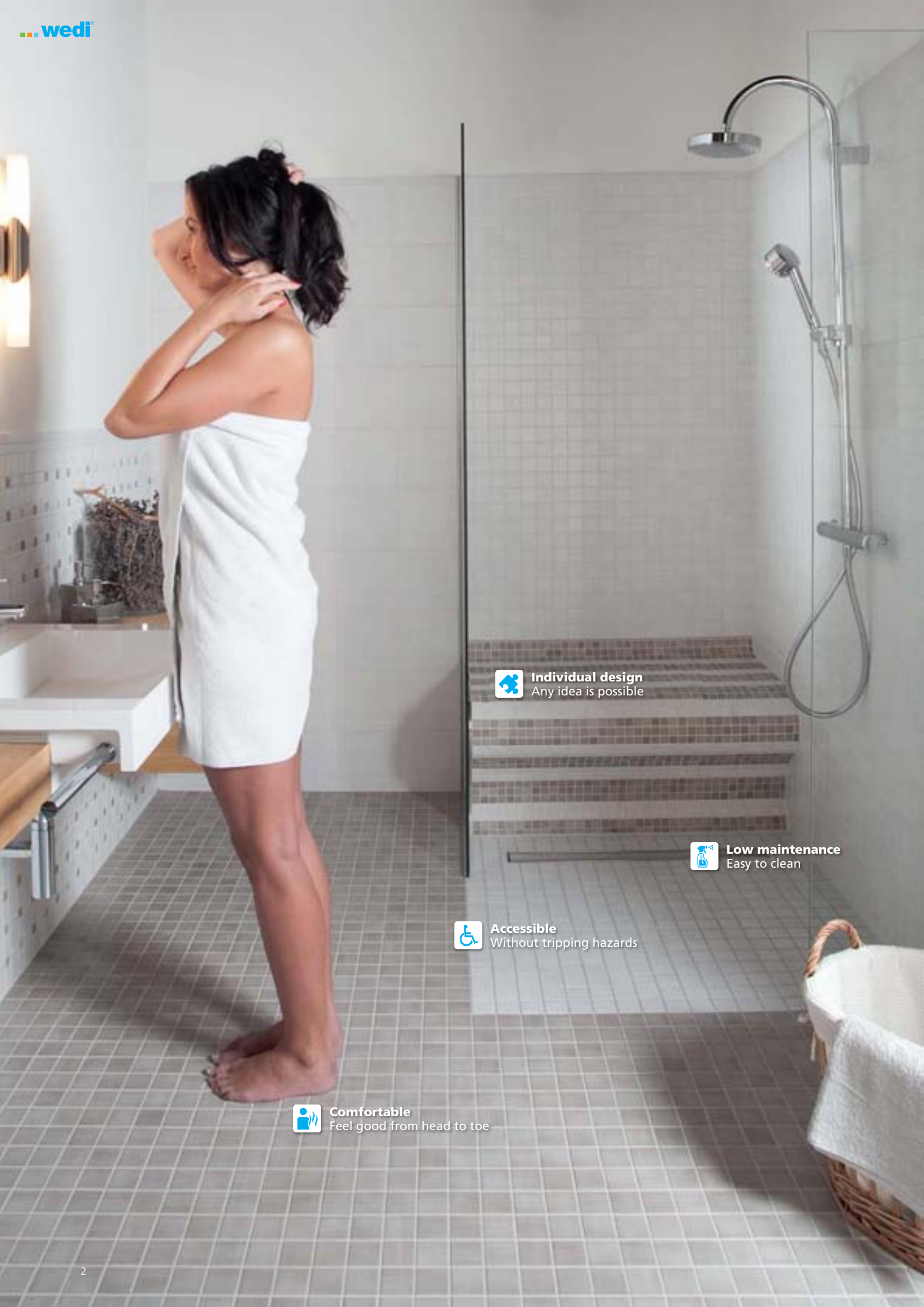


On offer from wedi INSIDE!

The principle of wedi INSIDE is very simple: high-quality ceramic coverings require an absolutely secure foundation. For this reason, tradesmen have relied on the unique wedi quality for decades, especially under tiles. 100 % watertight and that is absolutely certain – guaranteed by wedi!







Individual design
Any idea is possible



Low maintenance
Easy to clean



Accessible
Without tripping hazards



Comfortable
Feel good from head to toe

Many questions, one answer: **wedi**

When renovating your bathroom and especially when selecting the right shower, there are some important questions that need answering. Does an accessible and therefore suitable for elderly people flush-to-floor shower make sense? Do you want a point or linear drainage system? Would a wall drain be attractive for you? Will the shower have a standard size or can it be custom-made? And last but not least, what accessories do you need and what are the options available for the implementation of design ideas?

In this documentation, you will find the answers to all the important questions as well as the certainty of having found the best possible overall solution for any requirement with wedi systems.



Comfortable

All Fundo floor elements are perfectly suited as an underlay for tiles. As well as individual design, they provide long-lasting warmth and a pleasant underfoot feeling when combined with tiles as the top covering.



Accessible

The flush-to-floor Fundo shower elements from wedi combine puristic design perfectly with a high functionality and allow young and old to enjoy limitless bathing enjoyment – without any tripping hazards or sharp corners.



Individual design

As they are flush to the floor, the Fundo series offers an enormous amount of design options: from optical enlargement of the bathroom with continuous tiling through to the individual design of your shower with extras, such as niches, storage and seating areas..



Low maintenance

One wipe and it's all clean. Because all Fundo floor elements are flush-to-floor, making the cleaning of the bathroom floor much simpler. Combined with tiled shower walls, e.g. using the wedi XL structural panel as a basis, cleaning the walls is also child's play..

A shower experience of a very special kind

Tileable, accessible and with a modular design

