

wedi® Subliner Dry Waterproofing Sheet Membrane

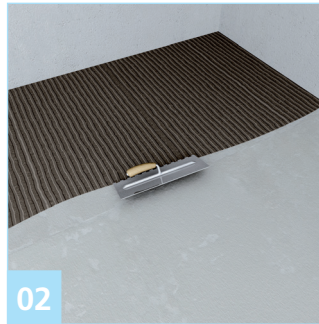
Installation on floors or other suitable, non-waterproof underlayments or substrates.

The wedi products within the group of Subliner Dry Systems offer specific benefits in installations and applications complementing our traditional wedi® Building Panel and Shower Systems. Subliner Systems are Sheet Membrane products, each designed to provide sound and thin profile underlayments for tile. Each of the system components provide water- and vapor proofing as needed over common cement or fiber cement backer boards or mortar beds or other comparable and suitable traditional structures for tiled applications in wet rooms. The wedi® Subliner Dry Sheet Waterproofing Membrane and its Subliner Accessories and components are sealed and connected with 2" (50.8 mm) wide membrane overlaps. In between, wedi® Sealant 620, a specialty sealant, is used to water- and even vapor proof these connections.



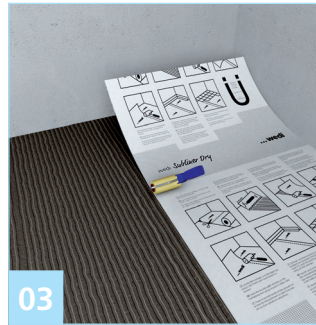
01

Lay out wedi® Subliner Dry and cut to size using a knife or scissors.



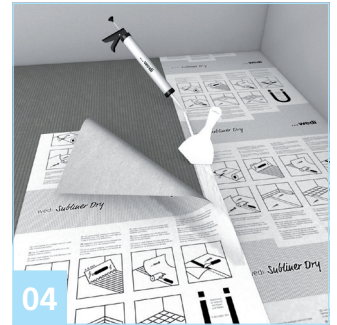
02

Apply thinset mortar to the prepared subfloor using a 1/8 x 1/8" (3.2 x 3.2 mm) or 1/4 x 1/4" (6.4 x 6.4 mm) notch trowel.



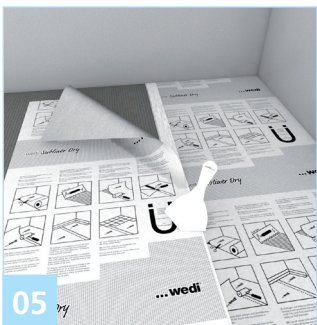
03

Insert wedi® Subliner Dry with the printed side facing upward and press on with a rubber roller or wooden float. Remove air pockets and other foreign particles from below the sheets.



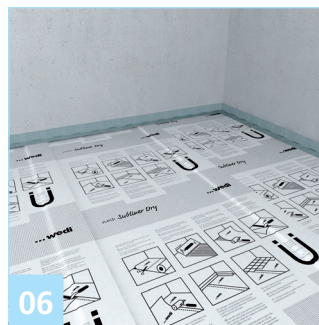
04

The sheets must overlap 2" (50.8 mm) at joints/transitions. Leave these overlapping areas free of any thinset and use tape to keep them folded upward and/or clean. Once the thinset has cured, apply wedi® Sealant 620 as a full bed onto the lower mat's seam connection area and press the top overlap flap into the wedi® Sealant 620.



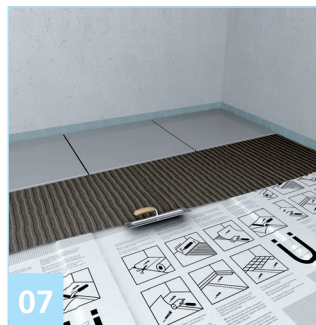
05

Spread all the wedi® Sealant 620 flat using a putty knife. Cross joints should be avoided.



06

In complete wet rooms, wedi recommends to flash Subliner Dry up the wall by 2" (50.8 mm) where it is still invisible behind the baseboard tile or wood applications.

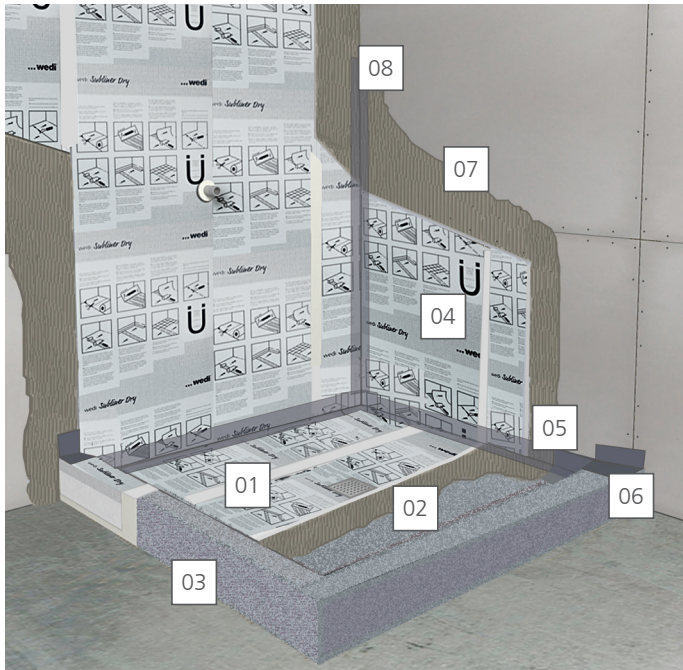


07

Start setting tile.

Item #: US500005
1 roll
39" x 98' (1 x 30 m)

Item #: US500001
1 roll
39" x 16' (1 x 5 m)



Installation Over Mortar Bed Showers / On Walls and Shower Floor

- | | | | |
|----|---|----|-------------------------|
| 01 | wedi® Sealant 620 | 05 | Inside Corner Seal |
| 02 | Bonding Flange Drain | 06 | Outside Corner Seal |
| 03 | Mortar bed structure with curb | 07 | Modified thinset mortar |
| 04 | Subliner Dry membrane in modified thinset mortar attached to primed dry-wall construction | 08 | Sealing Tape |

 wedi® Sealant 620 is used to waterproof all overlaps and connections.